



# Chai Lites



Congregation B'nai Emet  
9 West Bonita Dr.  
Simi Valley, CA 93065  
Phone: 805-581-3723  
info@cbesimi.org  
www.cbesimi.org



www.facebook.com/cbesimi/



@cbesimi

Fall 2023

Elul-Tishri-Heshvan-Kislev 5783-5784

Vol. 45, Issue 1

Dear Friends – Shanah  
Tovah!

Rosh Hashanah begins  
September 15th! Are  
you ready?

They say music can  
express the sentiments  
of the soul, and singing  
together as a community lifts one to a higher  
spiritual level. Music and singing play a such  
an important role in our tradition that they  
are the gateway to delve into Jewish worship.  
Music is a way to bring the beautiful words to  
life; sometimes we don't even use words, just a  
niggun, a melody!



After 35 years, our beloved Cantor Michael  
Russ, has retired. He and his lovely wife Merle  
will still be at services, and their daughter  
Adina will still bring her soaring voice to  
Erev Yom Kippur this year. Cantor has done a  
wonderful job and been very gracious, helping  
to lead services almost every Friday since the  
turbulent onset of COVID-19 and the transition  
to Zoom.

Now is a time of adjustment and renewal for all  
of us, back to our regular, busy lives, and back  
to shul. As we enter this High Holy Days season,  
I am delighted to introduce our new cantorial  
team to you and to welcome them to help  
lead our services this year. Kevin Longobart,  
still a college student, is a very talented and  
accomplished musician. He is knowledgeable  
about Jewish music, has attended the Song  
Leaders Boot Camp conference, worked with  
several local synagogues, and even received  
an American Jewish Star Search award.

Jerry Alban, his professional partner, is an  
accomplished professional musician and  
has worked in the Jewish music world for 30  
years. I hope the beauty, poetry, and profound  
meaning of our prayers will inspire you, and the  
music will uplift your soul. We welcome you to  
bring your family and friends to our beautiful  
services, and hope you'll generously support  
CBE in the coming year, so that we can continue  
to offer services, programs, learning, and  
creative Jewish living to our community.

May you be filled with holy optimism; may  
the New Year 5784 indeed lead us to healing  
and transformation. And, as we say in our  
prayers, may we all be inscribed (and inscribe  
ourselves) in the Book of Life, Blessing, Peace,  
and Contentment.

Shalom u'vrachah (Peace and blessing)!  
Rabbi Michele Paskow

**Beginning Hebrew  
Adult Education**

**Five Sundays, starting Oct. 15th 2023**  
9:00 - 10:00 am in the CBE School Building  
9 West Bonita Dr., Simi Valley

**Taught by Rabbi Michele Paskow**  
No charge; donations gratefully accepted

Sponsored by Read Hebrew America,  
a campaign of the NJOP  
(National Jewish Outreach Program)



To reserve your place in class, RSVP at [cbesimi.org](http://cbesimi.org)  
prior to the first session.

## Board & Affiliates

Michele Paskow <i>Rabbi</i>	Suzanne Mahler <i>VP, Social Action</i>
Jerry Alban Kevin Longobart Suzanne Mahler <i>Cantorial Staff</i>	Lois Friedman <i>Sisterhood President</i>
Michael Russ <i>Cantor Emeritus</i>	Cindy Shilkoff <i>Temple Office Admin. Dir. of Communications</i>
Steve Rossman <i>President</i>	Lindy Schneider <i>Preschool Director &amp; Office Manager</i>
Max Patera <i>Executive VP</i>	Meridith Patera <i>Dir. Emerita of Jewish Education</i>
Steven Altabef <i>Treasurer</i>	Melissa Cohne <i>Religious School Director</i>
Debra Schranze <i>Secretary</i>	Jill Katell <i>Religious Sch. Teacher</i>
Alan Mann <i>Financial Secretary</i>	Suzanne Epstein <i>Communications Editor</i>
Tamara Patera <i>VP, Communications</i>	Bobbie Sion <i>Gift Shop Admin.</i>
Ruth Ann Rossman <i>VP, Fundraising</i>	Jerry Alban Kevin Longobart <i>High Holy Days Choir Directors</i>
Ron Mittelman <i>VP, Membership</i>	Ben Bahr Ken Bahr Michael Hollander Max Patera Steve Rossman <i>Tech Team</i>
Emily Doepking Ruth Ann Rossman <i>Co-VPs, Programs</i>	
Frieda Bahr <i>VP, Religious Education</i>	

Minutes of CBE board meetings are available upon request.

Follow us and "like" our events on social media! It really helps spread the word about who we are and what we do!

 [www.facebook.com/cbesimi/](http://www.facebook.com/cbesimi/)  @cbesimi

## Contents

Rabbi's Greeting	1
President's Greeting	3
Upcoming Events	4
Women of CBE	7
Social Action	10
Jewish Education	11
Recent Events	12
Security Corner	20
Mazel Tov!	21
Recent Donations	22
Yahrzeits	25

Please send any temple mail or donations to:  
Congregation B'nai Emet  
PO Box 878  
Simi Valley, CA 93062-0878

If you or someone you know would like to receive our weekly communications, go to our website ([cbesimi.org](http://cbesimi.org)), scroll to the bottom of any page, and look for the simple sign-up form. Alternatively, you can email [info@cbesimi.org](mailto:info@cbesimi.org) with your request. If you think you are already signed up, but are not receiving them every Wednesday morning, please check your Spam folder.

### Become a Chai Lites Sponsor!

A great way to promote your business while also supporting CBE! Contact the temple office at [info@cbesimi.org](mailto:info@cbesimi.org) for more information.

Ad Size	Single Issue	Full Year (4 Issues)
Business Card	\$45.00	\$100.00
1/4 page	\$65.00	\$165.00
1/2 page	\$95.00	\$265.00
Full page	\$130.00	\$420.00

# President's Greeting

---



Shalom friends,

As I write this, the Thanksgiving holiday (and cooler Fall weather!) are still a long way off, but that doesn't mean I can't be thankful right now—and I am! Here are just a few of the reasons why.

For the last Shabbat Under the Stars of the summer, we had so much help setting up and cleaning up, including from people I haven't met before. I want to thank everyone who pitched in, and acknowledge the tech team members who work throughout services to make the experience as good as possible for both the in-person and Zoom attendees—something the technology doesn't always fully cooperate with!

That evening, there was also a milestone for CBE: the new parking lot lights were turned on for the first time to test them out and show them off to the congregation. I'm still working on finalizing the permit that will allow us to bring the lights into regular use, but it was very gratifying to finally see the results of all our hard work. Thank you, thank you, thank you to all who assisted in getting this important job done, whether by contributing funds, helping with paperwork, or digging the actual trenches for the wiring. It was truly a community effort, and one that our community will benefit from for many years to come.

If you haven't already, I urge you to come out or tune in to hear our amazing new Cantorial Team, Kevin Longobart and Jerry Alban. Right now, they're only scheduled to be with us for select services, but in the meantime they're working with the CBE Choir on a great program of songs for the High Holy Days. I'm very much looking forward to that. We're fortunate that Suzanne Mahler continues to lend her voice as well, bringing awe to our hearts when we hear it.

Jewish Education at CBE continues to evolve as we enter the new school year. The education team has been working hard to develop a program that will allow parents and the congregation in general to see the students' progress throughout the year. It also looks like it's going to be a lot of fun, so I'm sure it will keep the kids' attention—no easy task! Thank you to Melissa Cohne, her colleagues and aides (especially the volunteer helpers).

I also want to thank Rabbi Michele for leading our ongoing commitment to inclusiveness. I know we all try to honor her by welcoming anyone who comes through our doors. (And if you can only come to services on Zoom, you are still an important part of our community!) Whether you come from an Orthodox background or a secular one, you are welcome here. If you or your partner is of another faith, you are both welcome here. If you are LGBTQ, neurodiverse, or new to America, you are welcome here. The freedom to come together as a diverse “family of families” (as the Rabbi likes to put it) is one I'm thankful for each and every day.

Now, at the start of the new year, is a great time to commit (or recommit) to being one of our star helpers. If you haven't finished your membership forms yet, be sure to check one (or all) of the boxes in the volunteering section to indicate you are ready to help. You can also contact me, the Rabbi, or Cindy in the Temple office if you want to get involved. We are a small congregation, and we need your help! We will never ask anyone to do anything that is beyond their abilities, but if you are called upon for a task, I hope you will respond positively. This is key to spreading out all the hard work that goes into our services and events, and preventing our overachievers from burning themselves out. I think you will also find, as I have, that this is personally enriching, helping us continue to learn and grow throughout our lives.

*Continued on next page*

# President's Greeting

Continued from previous page

I look forward to thanking each and every one of you in a future letter or announcement!

Of course, I can't end this New Year's letter without reminding you that your membership dues pay only part of our expenses, and asking you to please be as generous as you can with your High Holy Days donations and your support throughout the year. Asking for money is my least favorite part of the President's duties, but it would be impossible for us to do anything without a sound financial footing. Please, please participate in keeping our CBE family whole and healthy.

I am so thankful for who we are. The bottom line is that we get things done, and we have fun doing it! I can't wait to see what this year holds.

Steve Rossman

President of the Board of CBE

## Upcoming Services

Fri. 9/1	7:00 pm	Zoom Shabbat	
Fri. 9/8	7:00 pm	Multi-Access Shabbat	Back-to-Shul Night with Cantorial Team Kevin and Jerry
Fri. 9/15	7:00 pm	Erev Rosh Hashanah	At Mt. Sinai
Sat. 9/16	10:00 am	Rosh Hashanah Morning	At Mt. Sinai
Sun. 9/17	5:30 pm	Tashlich	Rancho Simi Community Park
Fri. 9/22	7:00 pm	Zoom Shabbat	Shabbat Shuvah (Shabbat of Return)
Sun. 9/24	7:00 pm	Erev Yom Kippur (Kol Nidre)	At Mt. Sinai
Mon. 9/25	10:00 am	Yom Kippur	At Mt. Sinai
Fri. 9/29	6:00 pm	Multi-Access Shabbat	Erev Sukkot dinner in the sukkah New Member Welcome
Fri. 10/6	7:00 pm	Multi-Access Shabbat	Simchat Torah with Cantorial Team Kevin and Jerry
Fri. 10/13	7:00 pm	Zoom Shabbat	
Fri. 10/20	7:00 pm	Multi-Access Shabbat	With Cantorial Team Kevin and Jerry
Fri. 10/27	7:00 pm	Zoom Shabbat	
Fri. 11/3	7:00 pm	Multi-Access Shabbat	With Cantorial Team Kevin and Jerry
Fri. 11/10	7:00 pm	Zoom Shabbat	
Fri. 11/17	7:00 pm	Multi-Access Shabbat	With Cantorial Team Kevin and Jerry
Sat. 11/18	4:00 pm	In-Person Torah Service	Bat Mitzvah of Scarlett Lapidés

# Upcoming Events

## Back-to-Shul Night

Fri. Sept. 8th, 2023

7:00 pm

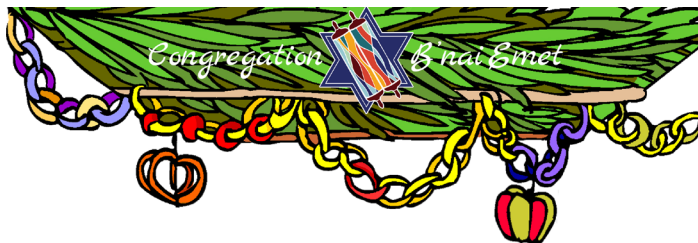
In-person & on Zoom

It's Fall, and you know what that means! Yes, pumpkin spice lattes, but also: it's time to go back to shul with Cantorial Team Kevin and Jerry, and get in the mood for the High Holy Days. Join us!



## High Holy Days 2023/5784

Full details available here:  
[https://www.cbesimi.org/  
high-holy-days](https://www.cbesimi.org/high-holy-days)



## New Member Welcome

Fri. Sept. 29th, 2023

Join us for dinner in the CBE sukkah, followed by Shabbat service with Cantorial Team Kevin and Jerry. Most importantly, help give a warm welcome to our newest temple members!



More details coming soon...

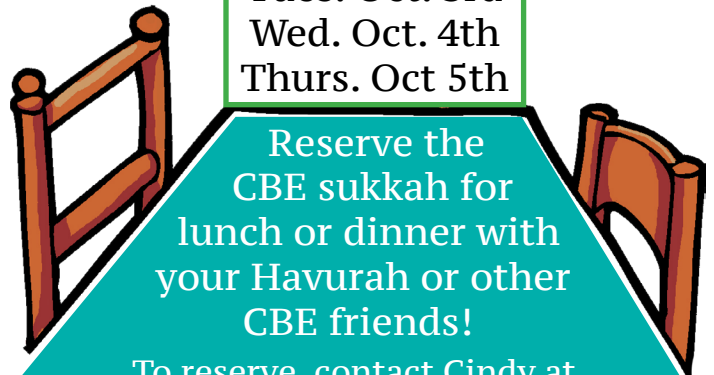


## Help build the CBE sukkah!

Morning of Sun. Sept. 17th

Contact Steve Rossman to volunteer!

Tues. Oct. 3rd  
Wed. Oct. 4th  
Thurs. Oct 5th



Reserve the CBE sukkah for lunch or dinner with your Havurah or other CBE friends!

To reserve, contact Cindy at [info@cbesimi.org](mailto:info@cbesimi.org).

*Note: You are responsible for bringing your meal and cleaning up afterward.*

NJOP

## Sushi in the Sukkah

Mon. Oct. 2nd 2023

6:00 pm

in the CBE sukkah

Part of **Sukkot**  
ACROSS AMERICA

Join us in celebrating with Jews across the nation! Light supper of sushi and sides, plus a cute candy craft!

let's  
celebrate  
together

RSVP by Sat. Sept. 30th 2023  
at [cbesimi.org](http://cbesimi.org)

# Upcoming Events

## Books AND Bagels

Sun. Oct. 1st, 9:30 am, on Zoom

### THE MEASURE

by Nikki Erlick

Eight ordinary people. One extraordinary choice.

It seems like any other day. You wake up, pour a cup of coffee, and head out.

But today, when you open your front door, waiting for you is a small wooden box. This box holds your fate inside: the answer to the exact number of years you will live.



To join Books and Bagels, email Barbara Poehls at [bbpoehls@gmail.com](mailto:bbpoehls@gmail.com)

THE SIMI VALLEY INTERFAITH COUNCIL

Tues. November 21st at 7pm



**Thanksgiving**

All faiths are invited to participate!

*Save the Date!*  
*More details coming soon...*



**Fall 2023**

## Simi Valley Street Fair

**Sat. Oct. 28th**  
**9:00 am to 4:00 pm**

**Visit the CBE booth, or volunteer for a shift!**  
**Contact Ron Mittelman if you are able to help.**

### Charitable IRA Rollover Required Minimum Distribution (RMD)

A simple and easy way to support CBE!

Did you know?

If you are 70 ½ or older, you can roll over up to \$100,000 from your IRA to CBE.

To qualify, transfer must go directly from your IRA to CBE.

Gifts made from your IRA are not reportable as taxable income.

The gift must be an outright gift, but can be used to satisfy existing pledges and will qualify for your required minimum distribution.

For more information, please contact CBE Board Treasurer Steve Altabef at [sbataxman@outlook.com](mailto:sbataxman@outlook.com)

**Save the Date: Tues. Oct. 10th**  
**For the first time, CBE is hosting the Simi Valley Chamber of Commerce Mixer! More details coming soon...**

## Sisterhood Happenings

As we welcome in the New Year of the Hebrew/Jewish calendar of 5784, I am sending everyone wishes of Peace, Love, Health, and Prosperity for the upcoming year.

Autumn is definitely my favorite time of year. The weather cools down (hopefully) after a seemingly endless summer of heat and the holiday season begins to ramp up with festivities from Rosh Hashanah and Sukkot through Hanukkah and the secular New Year. I make my Jewish New Year cards, “Shana Tayvah’s” as my mom used to call them, and send them to my Jewish friends and family; then again with Hanukkah and winter holiday cards in November and December. It’s a very busy time.

The Women of CBE have had a wonderful summer of activities. It seems that we are still trying to overcome the “fog” left behind from the long Covid-19 quarantine, but more and more of our activities are happening in-person. Zoom is a useful tool, but feels isolating compared with face-to-face socializing.

Many of our members participated in the temple’s very successful “Rock ‘n’ Roll Havdalah” event, either by assisting with set-up/clean up or just attending. It was a great time and WCBE donated \$2,000 to help sponsor the event.

Our general meeting in June was a game night at the home of our Executive Vice President, Jill Katell. We brought our favorite table games, including Rummikub, Mahjong, and others. We had a great turnout.

In July, our Programs Co-Vice Presidents (Rhonda Nadler, Alice Fiducia, and Jackie Kovar) arranged for a Ladies’ Dine-Out night at Ali Baba’s Middle Eastern Restaurant in Simi Valley. Our Fundraising Co-Vice Presidents (Ronnye Sacks, Amy Tellio, and Laura Kritzer) arranged our restaurant fundraiser for July at

Fire Island Grill on Madera in Simi Valley. Our upcoming calendar is full of get-togethers and celebrations. Our annual Membership Event will be held on Sept. 10th. October’s general meeting will be held the first Tuesday of October (rather than the second Tuesday as usual) to be able to celebrate Sukkot with Rabbi Michele. In November we will have a Hanukkah Craft and our annual Hanukkah Party.

### Ongoing activities:

Sisterhood is responsible for setting up Oneg Shabbat after in-person services at the Temple. We ask all of our members that are scheduled to help on their assigned night to please arrive early to help set up and stay afterward for cleanup. All hands are appreciated and if you want to help serve or take part in this committee, please contact Rhonda Nadler, who is also our Oneg Chair at [2supercheeky4u@gmail.com](mailto:2supercheeky4u@gmail.com).

We also run the Simi House of Judaica gift shop. Now that we are having more in-person services, we need help to staff the shop after services and during Oneg. Working in the gift shop can be fun, and there is no experience necessary. Bobbie, our gift shop manager, will train anyone interested. You can contact Bobbie directly at [Sionfam@gmail.com](mailto:Sionfam@gmail.com).

We also sell gift cards. We make a percentage from every card we sell, and there are gift cards available for virtually every retail shop, grocery store and gasoline station in the area, as well as a variety of others that can be ordered. Bobbie Sion is also our Gift Card Chair, so contact her at the email address above if you would like to special-order specific gift cards. Gift cards can also be purchased online at <https://www.raiserright.com/shop>. Our Enrollment Code is 9886E2EE8841. The digital cards are available to use within a minute.

In addition to gift cards, we are part of the Ralphs Community Contribution Program. Each year in September, participants must re-enroll

# Women of CBE

to send a percentage of the purchase dollars to our account. If you wish to enroll, you can sign up at <https://www.ralphs.com/account/communityrewards> or you can contact me at [lfriedmancrafty@gmail.com](mailto:lfriedmancrafty@gmail.com) for assistance.

Okay, now for The Pitch: If you aren't currently a member of WCBE, please join us. We need you! Your input, personality, and participation are what make our group interesting, fun, and valuable! As you can see, no one woman does anything on her own. Many of our officers and chairs are "Co-" and we never let our sisters dangle out there alone. Our group is open to any woman who embraces Reform Judaism, and we are inclusive. Without you we will always be "one woman short"! You can join on the website at <https://www.cbesimi.org/> sisterhood-membership.

As always, I want to thank our wonderful Officers, Co-VPs, and Committee Chairs for all their hard work. I couldn't do my job without you all.

Shanah Tovah!  
Lois Friedman  
WCBE President

## Upcoming WCBE Events



WOMEN OF CBE

*"Il pranzo della domenica"*  
**Sunday Italian Dinner**  
Sun. Sept. 10th 2023, 4:00 pm

Prance Court Trattoria  
(Home of Kathy Smith)

Free for paid-up WCBE Members  
\$10 for non-members/guests  
(applied to membership dues if you decide to join)

RSVP by Sept. 6th at [cbesimi.org](https://www.cbesimi.org)  
Please bring a folding chair if you are able, or let us know you'll need us to provide you with a seat.



*Simi House of Judaica*

Large selection, great variety ~ gifts & supplies for all occasions

- Jewelry
- Greeting cards
- Personalized kippot
- Bar/Bat Mitzvah registries
- Invitations by special order
- Gift cards for Amazon, gas stations, & many more!

Located at  
Congregation B'nai Emet  
9 W. Bonita Dr.  
Simi Valley, 93065

Call (805) 581-3723  
for hours and more information



*Tribute Cards*  
from Women of CBE

Cards for all occasions!  
Prices from \$3

Your purchase supports WCBE and the Women of Reform Judaism.

Go to [www.cbesimi.org/support-the-sisterhood](https://www.cbesimi.org/support-the-sisterhood) to see all available card designs and additional details. Contact Lynne Kelly at [lkelmom@aol.com](mailto:lkelmom@aol.com) with any questions.



## Upcoming WCBE Events



**Sukkot with the Rabbi**  
WCBE General Meeting  
**Oct. 3rd 2023**  
**6:30 pm**

Join us in the Rabbi's sukkah!  
More details coming soon...

RSVP at [cbesimi.org](https://cbesimi.org)  
Address included in confirmation email.



**5** Food  
**6** Drinks  
**7** Housewares

Sun. Oct. 29th  
9:00 am - 3:00 pm at CBE

### HANUKKAH BOUTIQUE

Vendor registration now open at  
<https://cbesimi.org/support-the-sisterhood>  
#hanukkah-boutique

Judaica  
**2** Jewelry  
**3** Apparel  
Toys  
**4**



WOMEN OF CBE

WCBE GENERAL MEETING  
**Hanukkah**  
**Craft Night**  
TUES. NOV. 14th 2023

Save the date!  
More details coming soon...

RSVP at [cbesimi.org](https://cbesimi.org)



WOMEN OF CBE

### Hanukkah Party

Tues Dec 12th 2023, 7:00 pm

Save the date!  
More details coming soon...

RSVP at [cbesimi.org](https://cbesimi.org)

Did you know? You can submit oneg sponsorship donations online at <https://www.cbesimi.org/support-the-sisterhood>

If you prefer the post, please send Sisterhood mail & donations to:  
Women of CBE, c/o Meridith Patera  
15050-C Campus Park Drive  
Moorpark, CA 93021

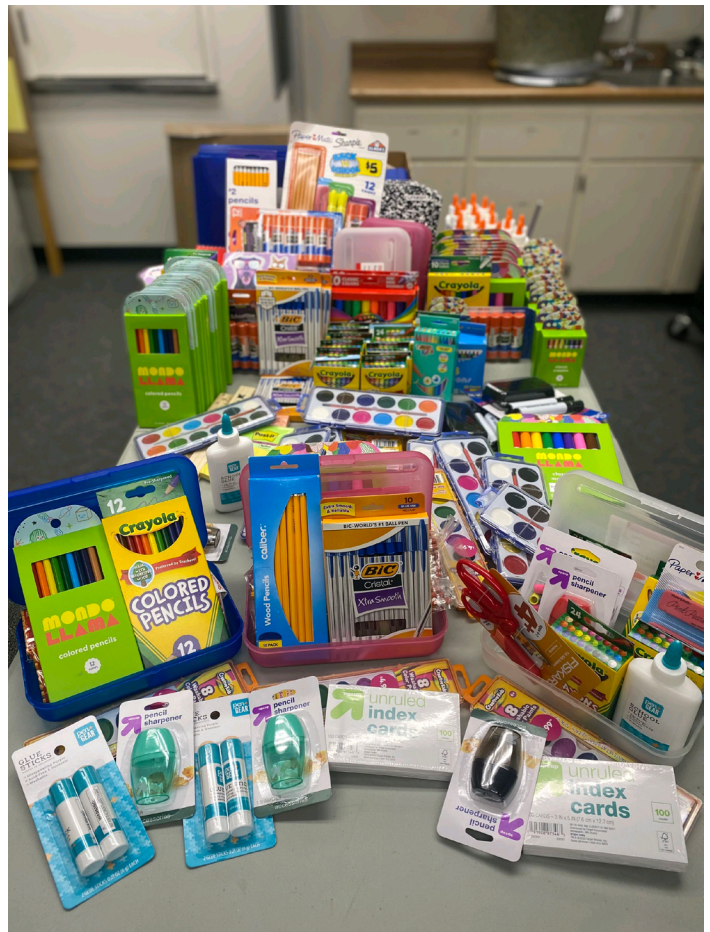
# Social Action

While school was out for summer, Social Action was alive and well here at CBE!

- Our Feed the Needy program is reaching more than 30 participants per month and is much appreciated by our local community.
- We held a very successful blood drive through Vitalant services that brought much-needed help to more than 30 patients.
- Proceeds from our June Mitzvah collection of swim gear went to the YMCA & Safe Passage, giving kids and adults what they needed to reach their goals as they learned pool safety and how to swim.
- In July, over a dozen bags and boxes of school supplies were donated to Crestview Elementary School, just in time for back-to-school on August 10th.
- The latest round of our Cards for the Troops Mitzvah Collection is underway, collecting greetings for both U.S. and IDF warfighters. Cards will be sent out in September, thanks to For the Troops and the IDF.

Looking forward to our exciting fall projects in order to further our mission of “Tikkun Olam”, repairing the world.

Suzanne Mahler  
VP, Social Action



*Top: A bright bevy of school supplies donated to students in need.*

*Left and above: Some of our wonderful Feed the Needy crew. Keep up the great work, CBE!*

## Upcoming Bat Mitzvah: Scarlett Lapidés

Scarlett Lapidés, daughter of Jonathan and Chandra Lapidés, is in 7th grade at Valley View Middle School, where her favorite subject is History. Outside of school, her interests



include Krav Maga, reading, horseback riding, and listening to '90s rap (she's cool like that). The Lapidés family have been members of CBE since 2022, when Scarlett began her Jewish education at Congregation B'nai Emet's Religious School. She plans to continue her involvement in Jewish life post-Bat Mitzvah by working towards Confirmation, getting involved in Hillel in college, and raising her own children to understand and appreciate their Jewish heritage.

For Scarlett, the best part of preparing for her Bat Mitzvah was learning with the Rabbi. She would like to thank Ms. Patera, Rabbi Michele, Papa Louis, and her Mom and Dad for all of their help and support in reaching this special day.

### Religious School is Back in Session

Click here for calendar of school sessions and special events:

[https://docs.google.com/document/d/1XR\\_12uzfCIRdEUIMHKhvZOeJ82Yb3OfU/edit](https://docs.google.com/document/d/1XR_12uzfCIRdEUIMHKhvZOeJ82Yb3OfU/edit)

### CBE Youth Teen Leadership Connection

New enhanced program for teens in 6th through 12th grade, combining aspects of Rabbi Michele's special TLC project last school year with Judaica High continuing education and Tikkun Olam values. This is part of our evolving effort to provide continuing Jewish engagement for our brilliant young people. Summary at right; stay tuned for additional details!

### CONGREGATION B'NAI EMET YOUTH TEEN LEADERSHIP CONNECTION

HERE'S WHAT YOU CAN DO IN CBEY TLC:

- **PIZZA & PILPUL** MEET WITH RABBI MICHELE IN A FUN SOCIAL SETTING, EAT PIZZA AND HAVE "PILPUL" (SPICY JEWISH DEBATES).
- **JUDAICA HIGH** STUDY OF DEEPER TOPICS IN JEWISH HISTORY, CULTURE, AND CITIZENSHIP, LED BY MERIDITH PATERA.
- **SATO (SOCIAL ACTION/TIKKUN OLAM) EVENTS** EVENTS MAY INCLUDE FEED THE NEEDY, VISITING THE ELDERLY, BEACH CLEAN-UP, AND CHARITY COLLECTION AND DISBURSEMENT
- **MADRICH** (VOLUNTEER AT RELIGIOUS SCHOOL)

For more information, please contact Religious School Director Melissa Cohne at 818-400-0869 or [melissa.cohne@cbesimi.org](mailto:melissa.cohne@cbesimi.org).

# Recent Events

## Rock 'n'Roll Havdalah

The place was packed and rockin' to the retro sound of the DVR band, featuring Suzanne Mahler and Ken Bahr at CBE's June fundraiser. Thanks to all those who worked so hard to make this a spectacular bash!



*Left: Volunteers sell tickets and give out t-shirts and wristbands to the VIPs.*

*Below: A fantastic spread orchestrated by Ruth Ann Rossman awaited VIP guests in the oneg room.*

*Bottom left: Andrew Mahler and Kyle Cohne stand at the ready to pour out the libations.*



# Recent Events



*Right and above: The ladies of CBE get their groove on!*

## Recent Events



*Above: Thanks to the DVR band for putting on an amazing show!*

## *¡Buenos Días Shabbat! with Cantor Pablo Duek*

In July, special guest Cantor Pablo Duek led a Shabbat morning service and presented a Lunch 'n' Learn program describing Jewish life in his native Argentina. Thank you to Cantor Pablo for a fascinating talk and a beautiful service!



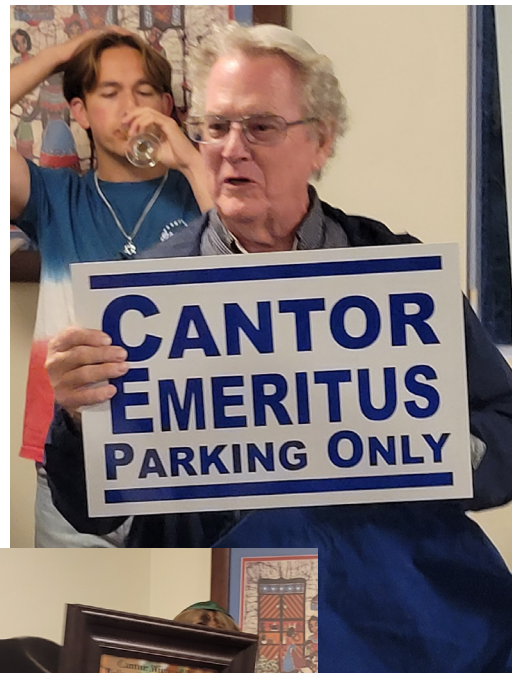
## *Retirement Celebration for Cantor Russ*

After decades of service, our beloved Cantor Michael Russ decided to hang up his guitar in order to spend more time with his family and enjoy the benefits of retirement. While he and Merle will still be an integral part of our community, CBE marked the occasion at the

July Shabbat Under the Stars with touching tributes, tokens of appreciation, and lots of love (and cake!) to express our gratitude.



# Recent Events



*Above and below: Rabbi Michele and Cantor Russ break bread together in honor of their enduring partnership and friendship as leaders of CBE.*



*Above: Perks of the Cantor Emeritus title!*

*Left: The man behind the myth!*

# Recent Events



Above: Tami Plotkin paid tribute to the Cantor's trademark punniness in cookie form.



## Open House

Members turned out at the end of July for a fun afternoon of barbecue, games, and meet-and-greets with visitors interested in finding out more about joining CBE. Despite the heat, a good time was had by all!





# Recent Events

*Opposite: President of the Board Steve Rossman presides over the grill, providing a very tasty lunch to all comers.*

*Meanwhile, the littles experiment with the ring-toss, while some of the teens hold a friendly game of corn hole. And nary a screen in sight – win all around!*



*Above: VP of Jewish Education Frieda Bahr and Director of Religious School Melissa Cohne talk up the educational programs offered by CBE.*



*Left: VP of Membership Ron Mittelman and VP of Communications Tamara Patera keep cool (-er) in the temple lobby, ready to assist with enrollment. Above them, a newly-refurbished frame showcases some of the friendly faces of CBE.*



*Above: Max and Tamara Patera set up their exhibition of Jewish symbols and values at the Open House, after presenting it at their workplace's Multicultural Day event to great interest from their colleagues.*



*Left: A tip of the hat right back to Sandy Miller, overseeing the Social Action station where attendees could write greetings to members of both the Israeli Defense Force (IDF) and U.S. Armed Forces.*

# Recent Events

The Open House also featured the first of three Shofar Brigade workshops arranged by Rabbi Michele in the lead-up to the High Holy Days. Dr. Ron Goldstein got the participants working their lungs (and laughing) as they prepared to bring the sounds of the shofar to services at Mt. Sinai in September.



*Left and below: Alan Mann, Ben and Ian Bahr, Rhonda Nadler, and Suzanne Epstein work on their shofar-blowing skills.*

*Bottom: Forget The Man with the Golden Gun, we've got The Rabbi with the Golden Shofar!*

*Opposite: Rabbi Michele explains it all!*



# Recent Events



## August Shabbat Under the Stars

We had a great turnout to say farewell to summer and enjoy the sounds of our new Cantors Kevin and Jerry, accompanied by some special guests. There was a big reveal of the new parking lot lights as well, a harbinger of a bright new year!



*In Loving Memory of  
Sharon Mahler  
by the Mahler Family*

To purchase a leaf for our Tree of Life in memory or honor of a loved one, go to <https://www.cbesimi.org/product-page/tree-of-life-leaf>

# Security Corner

Hello friends,

As Executive VP, I've been getting communications regarding security issues at religious institutions in the US. I recently attended a webinar hosted by the Anti-Defamation League (ADL) about the growing threat of "swatting" to Jewish institutions. Swatting is a cowardly form of terrorism, wherein someone calls the police and falsely claims that there will soon be an attack, such as a bomb or an active shooter, at a particular place. The sole intention is to cause disruption and panic among unsuspecting victims by instigating a SWAT team to show up at the identified location, expecting a dangerous situation.



The ADL in their webinar shared information about what appears to be a coordinated group of swatters currently targeting synagogues. They have made a habit of timing their attacks to coincide with a service or event being live-streamed by the targeted synagogue, so that they can tune in and watch the results of their despicable actions unfold in real time.

One takeaway from the webinar is that it's important for our communities to be aware of the possibility of swatting. If we are mentally prepared for such a scenario, it won't have as much of an impact on us if it does happen. We will be better able to understand the situation, keep calm, and cooperate with law enforcement.

Max Paterra  
Executive Vice President

Sadly, swatting incidents have been increasing in frequency in recent years. However, this means that more and more law enforcement agencies have become familiar with this tactic. Officers are being trained to recognize likely swatting attempts, and respond first with a phone call or a welfare check, rather than immediately sending out a SWAT team in full force. This does not mean they ignore threats, of course. They still do their due diligence to ensure that all is well, because you never know. That said, it is almost guaranteed that a real attacker would know better than to warn either police or the intended victims ahead of time!

→ → → → → → → →

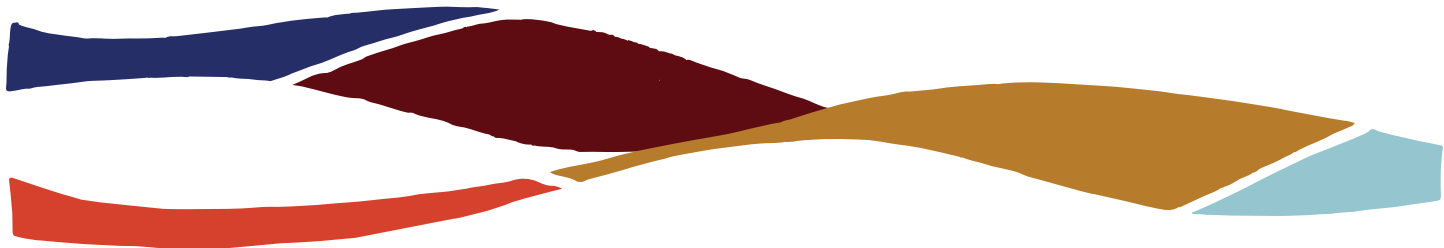
*Turn your car into a Mitzvah—  
Donate it today!*

*Free pick-up, tax write off—what's not to like?*

A graphic showing a US one-dollar bill and two quarters. The bill is partially folded and the quarters are placed on top of it.

**Call 855-500-RIDE or go to**  
[careasy.org/nonprofit/Congregation-Bnai-Emet](http://careasy.org/nonprofit/Congregation-Bnai-Emet)

← ← ← ← ← ← ← ←



# Mazel Tov!

## Birthdays

Judy Epstein	9/1		Natalie Richmond	11/5	
Tami Finkbeiner	9/3		Rita Kovar	11/7	
Eliot Epstein	9/6		Jacob Kritzer	11/13	22nd
Bryce Lindeen	9/6	16th	Scarlett Lapidés	11/17	13th
Debbie Knecht	9/12		Miko Sion	11/25	
Gabe Katell	9/15		Oren Sofer	11/25	12th
Madison Crawford	9/18	19th	Jesse Charnick	11/28	
Maxine Seidel	9/18		Gail J. Altabef	11/30	
Edith Bahr	9/25	5th	Rhonda Nadler	11/30	
Dr. Chen Mu Forster	9/27		Daniel Rozdial	11/30	
Zoey Adams	9/29	11th			
Karen Troop	9/30				
Carole Fineberg	10/9				
Chandra Lapidés	10/15				
Gabrielle Shabah	10/15				
Robert Fricke	10/17				
Catherine Holst	10/17				
Thomas Sumner	10/18				
Burton Sedlak	10/23				
Bobbie Sion	10/25				
Kathy Smith	10/28				
Susan Leviton	10/30				
Samuel Forster	11/1	21st			
Dan Schranze	11/2				
Enrique Fuentes	11/3	12th			
David Kritzer	11/4				
Joseph Davidhoff	11/5	18th			
Dr. Tamara Plotkin	11/5				

## Anniversaries

Steve & Ruth Ann Rossman	9/12	52nd
Eric & Erica Weiner	9/23	11th
Maxine Seidel & Thomas Sumner	9/29	11th
Todd & Lindy Schneider	10/11	42nd
Jerry & Marla Bergmann	10/12	43rd
Emily & Kristopher Doepking	10/12	21st
Larry & Cindy Shilkoff	10/19	43rd
Michael & Julie Mutal	10/24	24th
Max & Tamara Patera	10/24	2nd
Les & Daryl Sutton	10/24	47th
Ron & Gail Mittelman	11/2	54th
Ronald & Stacey Schneeberger	11/3	32nd
Gabe & Jill Katell	11/20	35th
Dan & Debra Schranze	11/29	37th
Marla & Steve Grosslight	11/30	43rd

# Recent Donations

---

## **Building Improvement Fund**

Mel & Louise Edelson

*In honor of our 61st Anniversary*

Alice Fiducia

Tami Finkbeiner

*In honor of Cantor Michael Russ & his years of service to CBE*

Alexander Goldenberg

*In memory of Riva Goldenberg's yahrzeit*

Gabe & Jill Katell

*In honor of Minnie Anzo's 100th Birthday!*

Linda Landau

*In memory of WONDERFUL Aunt Joan's yahrzeit*

## **Electronic Transaction Fee Donation**

Steven & Gail Altabef

Honey Amado

Marlene Auchman

Ken & Frieda Bahr

Herschel & Laura Berger

Christie Broderson

Lovie Brown

Roberta Brown

Victoria Chaisez

Sherie DeVillers

Emily & Kristopher Doepking

Steven & Lois Friedman

Alexander Goldenberg

Brooke Grayson

Sharma Henderson

Jenna Hicks

Karen Hoffmann

Michael & Marilyn Hollander

Kelly Hunter

Gabe & Jill Katell

Dale Keister

Keith & Lynne Kelly

Rita Kovar

22

David & Laura Kritzer

Shawn Kroker

Deborah Kutnik

Linda Landau

Isaac Levy

Nikki Lian

Bruce Mahler

Alan Mann

Matt Miguelena

Alex & Stacey Mortimer

Sharon Orinski

Don Ornelas

Max & Tamara Patera

Elsa Perniciaro

Miga Phillips

Bob & Barbara Poehls

Carol Rosado

Cantor Michael & Merle Russ

Ronnye Sacks

Glen Schecter

Dan & Debra Schranze

Larry & Cindy Shilkoff

Miko & Bobbie Sion

Susan Strombotne

Sally Tomniczak

Bernadete Trice

Olivia Venhuizen

Paul & Zoe Venhuizen

Scott Walton

Juan Yanez

## **Choir Fund**

Louise Edelson

*In honor of Mel's 87th birthday*

Mel Edelson

*In honor of my lovely wife Louise's 84th birthday*

Harvey & Evie Freeman

*In honor of Minnie Anzo's 100th Birthday!*

# Recent Donations

---

## **Feed the Needy**

David & Cheryl Hirsch

*In honor of Minnie's 100th Birthday, wishing you many more!*

Sheldon Liebmann

*In memory of Leon Brody*

## **General Fund**

Women of CBE

*Fundraiser Support*

Cindy Shilkoff

## **Grants**

Maurice Amado Foundation

*For sustainable garden & gaga court*

## **High Holy Days Fund**

Glen & Debbie Knecht

## **Memorial Fund**

Emily & Kristopher Doepking

*Tree of Life Leaf in memory of Jennifer Poehls*

Ken & Suzanne Epstein

*Tree of Life Leaf in memory of Jennifer Poehls*

Tami Finkbeiner

*In memory of Joe & Ruetta Orloff's Yahrzeits*

Eric & Joyce Goldman

*Tree of Life Leaf in memory of Jennifer Poehls*

Catherine Holst

*In memory of Donna Bailey's Yahrzeit*

Keith & Lynne Kelly

*Tree of Life Leaf in memory of Jennifer Poehls*

Sheldon Liebmann

*In memory of Michael Liebmann's Yahrzeit*

Rabbi Michele Paskow

*Tree of Life Leaf in memory of Jennifer Poehls*

Steve & Ruth Ann Rossman

*Tree of Life Leaf in memory of Jennifer Poehls*

Steve & Ruth Ann Rossman

*Tree of Life Leaf in memory of Uncle Dan Bloch*

Cantor Michael & Merle Russ

*Tree of Life Leaf in memory of Jennifer Poehls*

Mitchell & Lynn Salberg

*In memory of Burton, Shirley, & Steven Borrok's Yahrzeits*

Sandra Sussman

*In memory of Marvin Sussman's Yahrzeit*

Les & Daryl Sutton

*Tree of Life Leaf in memory of Jennifer Poehls*

Anne Wilfong

*Tree of Life Leaf in memory of Jennifer Poehls*

## **Programs Fund**

Roberta Brown

*In appreciation of the 7/15 Shabbat morning service*

Ron & Sybil Goldstein

*For the 7/15 Lunch & Learn*

Shirley Maccabee

*For the 7/15 Lunch & Learn*

## **Rabbi's Discretionary Fund**

Lisa & Norman Berezowsky

*In memory of Leo Huttas' Yahrzeit*

Alan & Susan Flaschner

*In appreciation of Ark opening honor*

Alan & Susan Flaschner

*Monthly Donations to Rabbi's Discretionary Fund*

Steven & Lois Friedman

*In memory of Uncle Irwin Katzman's Yahrzeit*

Glen & Debbie Knecht

*In memory of Theodore Karoff's Yahrzeit*

Beryl Mann

*In appreciation of sermon at sister's funeral service*

Ruth Pollack

*"Just because"*

Dan & Debra Schranze

*In honor of dear, sweet Minnie Anzo's 100th Birthday*

## **Religious School Fund**

Susan & Neal Epstein

*In memory of Trevor Grant Scharf*

# Recent Donations

**Guenther & Gayle Menke**

*In memory of*

*Darius Eugene Simpson-Menke*

**Rosalie Roder**

*In memory of Zohara Lily Shabah*

**Debbie & Dan Schranze**

*In memory of Robert & Beverly Friedman*

**Michelle Scharf**

*In memory of Trevor Grant Scharf*

## Tribute Donations

**Robert & Lana Fricke**

*Tree of Life Leaf in honor of Minnie Anzo's  
100th Birthday!*

**Steven & Lois Friedman**

*Tree of Life Leaf in honor of Minnie Anzo's  
100th Birthday!*

**Gabe & Jill Katell**

*Tree of Life Leaf in honor of Minnie Anzo's  
100th Birthday!*

**Daniel & Stephanie Mahoney**

*In honor of Minnie Anzo*

**Rabbi Michele Paskow**

*Tree of Life Leaf in honor of Minnie Anzo's  
100th Birthday!*

**Steve & Ruth Ann Rossman**

*Tree of Life Leaf in honor of Minnie Anzo's  
100th Birthday!*

**Cantor Michael & Merle Russ**

*Tree of Life Leaf in honor of Minnie Anzo's  
100th Birthday!*

**Larry & Cindy Shilkoff**

*Tree of Life Leaf in honor of Minnie Anzo's  
100th Birthday!*

**Miko & Bobbie Sion**

*In honor of Jessica & Jason Goldman's wedding*

## Current Needs

### Building & Property Improvement

Perimeter security fencing

### Health & Safety


AED: Automated External Defibrillator

## Cemetery Program

It's not something we like to think about, but preparing for your own passing in advance ensures your peace of mind, and relieves loved ones of stressful decisions in a time of loss. Congregation B'nai Emet has partnered with Mount Sinai Memorial Park in an endowment program to help our members make pre-need arrangements for burial plots and other funeral concerns. Participation has financial benefits both for you and for CBE.


For more information, contact Ruth Ann Rossman at [rupee24601@gmail.com](mailto:rupee24601@gmail.com) or (805) 581-3723. She will connect you with Josh Ryan, Advance Planning Representative at Mount Sinai, or one of his partners. Absolutely no obligation.

### Advertisement



**Congregation Bnai Emet Advance Planning Representatives**

Eric Frank 805-306-6410 <a href="mailto:efrank@mountsinaiparks.org">efrank@mountsinaiparks.org</a>	Josh T. Ryan 805-306-6411 <a href="mailto:jtryan@mountsinaiparks.org">jtryan@mountsinaiparks.org</a>
--	--



Simi Valley FD 1745 6150 Mount Sinai Drive, Simi Valley CA 93063  
Hollywood Hills FD 1010 5950 Forest Lawn Drive Los Angeles CA 90068  
[www.mountsinaiparks.org](http://www.mountsinaiparks.org) 800-600-0076  
Dedicated to the entire Jewish community as a service of Sinai Temple of Los Angeles.



# Yahrzeits

## Observing Yahrzeits at CBE

A yahrzeit is the anniversary of a death. It is traditional to light a 24-hour memorial candle in your home, at sundown on the evening before the date of the yahrzeit.

Names of the remembered are read out at Shabbat services on the Friday night immediately preceding the yahrzeit date. Friends and family attend this service, and participate in the recitation of the Mourner's Kaddish. Many people also make a donation to the temple in honor of the remembered, as a mitzvah on behalf of a loved one who is no longer here to do so.

Those who have yahrzeits on file with the Temple office will receive reminders before the dates. We ask for your help in keeping this information current and complete. To add to the current yahrzeit information on file, go to <https://www.cbesimi.org/yahrzeit-reminders>. To check or change same, please contact the office.



Solomon Sussman	9/2	Elul 16
Sylvia Freeman	9/3	Elul 17
Nelson Gould	9/3	
Sheri Enright	9/4	
Jean Epstein	9/5	
Rose Fleischmann	9/5	Elul 19
Michael Stein	9/5	
Michael Tratner	9/5	Elul 19
George Ribstein	9/6	
Mary W. Sloan	9/6	Elul 20

Miriam Apsel	9/8	
Carolyn Epstein	9/8	
Robert Finkbeiner	9/8	
Gerhard Heimann	9/8	Elul 22
Donald J. Schwartz	9/8	Elul 22
Harold Ducker	9/9	
Armin Hollander	9/9	Elul 23
Brian Ortiz	9/9	Elul 23
Oscar Bromberger	9/10	
Joseph Melnick	9/10	Elul 24
Faina Vineberg	9/10	Elul 24
Ada Scheinert	9/11	
Alice Silverman	9/11	Elul 25
J.G. Neugroschl	9/12	
Harry Troop	9/12	
Rudolph Edelstein	9/13	
Philip Landau	9/13	Elul 27
Herman Leon	9/13	Elul 27
Anne Sussman	9/13	Elul 27
Annette Beezy	9/14	Elul 28
Naomi Chusid	9/14	Elul 28
Evelyn Levin	9/14	Elul 28
Hyman Chait	9/15	Elul 29
Elsa Fleischmann	9/15	Elul 29
David McMoyler	9/15	Elul 29
Aaron Katzman	9/16	Tishrei 1
Cathy Mittelman	9/16	Tishrei 1
Bernice Amado	9/17	
Dora Chayman Blecher	9/17	Tishrei 2

# *Yahrzeits*

Molly Ann Schwartz	9/17	Tishrei 2	Lainie Stein	10/5	
Jennie Sylvia Lindenbaum	9/18	Tishrei 3	Joseph Sweet	10/6	Tishrei 21
Sandford Scharf	9/18		Walter Ascher	10/8	Tishrei 23
Sylvia Selbst	9/19	Tishrei 4	Morris Yasskin	10/8	
Audrey Gramowitz	9/20		Richard Glassman	10/9	Tishrei 24
Douglas A. Millings	9/20		Molly Mandelbaum Gottlieb	10/10	Tishrei 25
Terry Logan	9/21		Steve Bernstein	10/11	Tishrei 26
Arthur Frederick Mofchum	9/21	Tishrei 6	Irwin Cohen	10/11	Tishrei 26
Ann Schneider	9/21	Tishrei 6	Anne Leibl	10/11	Tishrei 26
Gerri Katz	9/22	Tishrei 7	Jack Volkerts	10/11	Tishrei 26
Mayer Yaskiel	9/22	Tishrei 7	Wilbert Melnick	10/12	Tishrei 27
Morris Feldman	9/23	Tishrei 8	Sam Toronczyk	10/14	
Louis Karoff	9/23	Tishrei 8	Erna Ascher	10/15	Tishrei 30
Karel Venhuizen	9/23	Tishrei 8	Miriam Landau	10/15	Tishrei 30
Judy Epstein	9/25	Tishrei 10	Marian Karoff	10/16	Heshvan 1
Isaak Pichkhadze	9/25	Tishrei 10	Frances Weiss	10/16	Heshvan 1
Judith Gail Karoff	9/26	Tishrei 11	Ralph Amado	10/17	
Edith Diane Weiner	9/26	Tishrei 11	Benno Epstein	10/17	
Craig Lamm	9/27		Jean Ilowitz	10/18	
Joan Liebmann	9/28	Tishrei 13	Sam Farkas	10/19	Heshvan 4
Micah Amado	9/29		Dylan Lindeen	10/21	
Julius Brandler	9/30	Tishrei 15	Gerald Jerome York	10/21	Heshvan 6
Grace Morris	10/1		Belle Franklin	10/24	
Ida Marcus	10/2		Daniel C. Gilson	10/24	Heshvan 9
Stuart Niesen	10/2	Tishrei 17	Gabriel Seidel	10/25	Heshvan 10
Irwin Cohen	10/5		Regina Rachel Mann	10/26	
Georgia Fishman	10/5	Tishrei 20	Jack Nadler	10/26	Heshvan 11
Mary Finkelstein Mitchel	10/5		Joel Ribstein	10/26	

# *Yahrzeits*

Nedra Trachtenberg	10/26	Heshvan 11
Lewis Howard	10/27	
Rena Schweitzer	10/27	Heshvan 12
Helene Bromberger	10/28	
Hermann Bromberger	10/28	
Samuel Bromberger	10/28	
Edythe Anita Friedman	10/28	
Stuart Stern	10/28	Heshvan 13
Mary Ann Hatch	10/29	Heshvan 14
William Priest	10/29	Heshvan 14
Luis Albert Rosado	10/29	
Tanya Sadow Becker	10/30	
Edward I. Berns	10/30	
Ron Gutierrez	10/31	Heshvan 16
Muriel Cookie" Stern"	10/31	
Ethel Albert	11/1	Heshvan 17
Carl Norman Kitt, Sr.	11/1	Heshvan 17
Linda Zahm	11/1	Heshvan 17
Bernice Simon	11/2	Heshvan 18
Sylvan Simon	11/2	Heshvan 18
David Utiger	11/2	
Richard Berns	11/3	
Lydia Martins	11/3	
Ann Miller	11/5	Heshvan 21
Max Satin	11/5	Heshvan 21
Simon Levy	11/6	Heshvan 22
Sylvia Charnick	11/8	
Ida Luger	11/8	
David Manos	11/8	

Abraham Luskin	11/9	Heshvan 25
Ben De Nunez	11/11	Heshvan 27
Dr. Leonard N. Sloan	11/11	
David Marcus	11/12	
Leona Edelstein	11/13	
Esther Frankel	11/13	Heshvan 29
Stephen Giles	11/13	Heshvan 29
Rebecca K. Schwartz	11/13	Heshvan 29
Ber Goldenberg	11/14	Kislev 1
Rose Warren	11/14	Kislev 1
Aaron Saul Chusid	11/16	Kislev 3
Zelda Lester	11/16	
Seymour Schneider	11/16	Kislev 3
Thomas Lawson	11/17	Kislev 4
Clell Goldstein	11/20	Kislev 7
Adelle Fishman	11/21	
Gloria Friedman	11/21	Kislev 8
Jeff Hicks	11/21	Kislev 8
Robert H. Liebmann	11/22	Kislev 9
Shirley Zimmerman	11/22	
Phyllis Faye Berns	11/23	
Nora Judge	11/23	Kislev 10
Sylvia Schneider	11/24	Kislev 11
Norman Rifkin	11/26	
Benish Landau	11/27	Kislev 14
Geneva Yasskin	11/27	
Mollie Troop	11/28	
Regina Greenstein	11/29	
Robert Mutal	11/29	Kislev 16

# FOR OUR MEMBERS

A UNIQUE SOURCE OF INCOME FOR TEMPLE B'NAI EMET

## *Premiere Pre-Need Partner Program*

As a Premiere Pre-Need Partner, Mount Sinai will donate funds to the temple when members purchase property in advance of need from their dedicated Advisor, Josh T. Ryan.



### MEET JOSH T. RYAN

Josh T. Ryan is our temple's dedicated advisor for our Premier Pre-Need Partner Program with Mount Sinai Memorial Parks. Josh is a father of two and former entertainment professional who

has been our direct point of contact for years. Always contact Josh directly and be sure to remind him you are from our temple.

*"As Temple B'nai Emet's dedicated advance planning advisor, I am passionate about serving our temple and our community. As a son, and single father, legacy is very important to me. Whether you're in immediate need of property or just beginning to consider your options, I am here to guide you with compassion and expertise. Email me now to make your own complimentary and confidential appointment or contact Temple B'nai Emet's Executive Director."*

FOR MORE INFORMATION CONTACT JOSH T. RYAN

[jtryan@mountsinaiiparks.org](mailto:jtryan@mountsinaiiparks.org) 805-306-6411

**MOUNT SINAI MEMORIAL PARKS WILL DONATE THE FOLLOWING:**

**\$1,000** per Companion Estate purchased

**\$500** per Single or Double ground unit purchased

**\$500** per Single or Double wall crypt purchased at Mount Sinai Simi Valley

*Funds donated directly to synagogue 90 days after each property agreement is executed.*



[www.mountsinaiiparks.org](http://www.mountsinaiiparks.org)

Simi Valley FD 1745 6150 Mount Sinai Drive, Simi Valley CA 93063  
Hollywood Hills FD 1010 5950 Forest Lawn Drive, Los Angeles CA 90068

*Dedicated to the entire Jewish Community as a service of Sinai Temple of Los Angeles*