

C.B.E. CHAI LITES

Phone: 805-581-3723
Fax: 805-581-3160
E-mail: bnaimet@rain.org

Volume 29, Issue 2

January-February 2008/Tevet-Shevat-Adar I 5768

Rabbi's Message

Dear Friends – Shalom Chaverim!

As we bring in the new year of 2008, I'd like to share some Jewish insights that I came across for **SEVEN WAYS TO HAPPINESS** that I think are very nice and inspiring. I hope these will help you have a joyous year and positive outlook on life.



1. Sometimes you have to fake it. "Weep before God, laugh in front of everyone else."
Yiddish proverb, 19th c.
2. Find your niche. "The happiest person is the one who finds his place in the world and is content to stay in it."
Talmud, 5th c.
3. Enjoy it now. "Enjoy life while you can. When you face your Maker, God will ask you why you did not partake of the pleasures of life which were available...and you'd better have a good explanation."
Talmud Yerushalmi, 6th c.
4. Make yourself happy. "Each morning when I open my eyes, I say to myself: I, not events, have the power to make me happy or unhappy. I can choose which it shall be. Yesterday is dead, tomorrow hasn't arrived yet. I have just one day, today, and I'm going to be happy in it."
Groucho Marx, 20th c.
5. Know your limits. "Happiness is the midpoint between too little and too much. When what we are is what we wish, that is happiness. When envy appears, happiness will vanish."
The Kotzker Rebbe, 19th c.
6. Success is getting what you want. Happiness is wanting what you already have. "Contentment makes poor men rich and discontent makes rich men poor. The wise will realize that the search for happiness is one of the main sources of unhappiness in the world."
Solomon ibn Gabirol, 11th c.
7. Make the most of all that comes. "Above all, these three things bring happiness: a pleasant melody, a beautiful place to be, the ability to appreciate life's gifts."
Talmud Brachot, 5th c.

May this be a year of happiness, health and blessing for you. And remember, "Happiness is not a station you arrive at, but a manner of traveling" (*Margaret Lee Runbeck*).

Happy New Year! B'shalom!

Rabbi Michele Paskow

SHABBAT GUEST SPEAKER: On Friday night **Jan. 11th**, Dinah Berland, poet and book editor with a background in art, will be our guest speaker. She will discuss her recent book *Hours of Devotion: Fanny Neuda's Book of Prayers for Jewish Women*. Ms. Berland has translated and adapted this women's prayer book, originally penned in 1855, for a modern audience. Ms. Berland has worked as a book editor for the [J. Paul Getty Museum](http://www.jpgm.org) in Los Angeles since 1994. Please join us for an interesting lecture and discussion!

President's Message by Earl Rosado

I can't believe that 2007 is nearly over! It's been an unbelievably fast paced year. As usual the past couple of months have been busy.

In November we participated in Mitzvah Day. Suzie Fintz organized our temple's efforts to help the community. The Sisterhood had their annual Hanukkah boutique and the Pre-school had a successful "Cooks Night Out." The night before Thanksgiving CBE took part in the Interfaith Service held at St. Francis of Assisi Church. Rabbi Michele, Cantor Russ and the CBE choir participated.

In December we celebrated Hanukkah in a variety of ways. The second night we had our 5th annual Community Candle Lighting celebration at the Regal Center. A wonderful time was had by all. Shari Schultz did a fabulous job making sure everything went smoothly. We had a great turnout and the weather was favorable this year. There were wonderful performances by the Preschool, Religious school and the CBE choir. There were two amazing plays performed at our annual Hanukkah party. One play was performed by the 6th grade religious school class and the other one performed by adults. Both were written and directed by our very own Meridith Patera. Sandy Leon organized a delicious dinner that was enjoyed by all.

As you are aware, the JLC listed the Corto property a couple of months ago and they are currently in escrow with a developer. The escrow period will last about fifteen months and started on November 21, 2008. Unfortunately the Lutheran Church on Bonita has accepted an offer from another religious entity. I am deeply saddened by this recent turn of events. A special thanks goes to Jeff Ringer, Eric Bordo, Suzie Fintz, Carole Fineberg and Illise Holran for all their hard work and long hours that they dedicated in trying to secure the Bonita property. I will keep you informed if there are any changes.

Have a prosperous and healthy 2008!
Shalom

Earl Rosado



The minutes of CBE Board meetings are available to all members in the Temple office.

In This Issue

Page	Content
1	Rabbi's Message
2	President's Message, CBE Board
3	Bar Mitzvah, Social Action, TuB'Shvat, Welcome
4	JLC Update
5	Oneg Sponsors, Women of CBE
6	Photo Gallery
7	More Photos
8	Concert Invitation
9	CBE Concert Information, Recent Donations
10	Super Sunday
11	Birthdays, Anniversaries, Refuah Shlemah
12	Yahrzeits, Condolence
13	House of Judaica (advertising)
14-15	Advertising
16	Schedule of Services, Candle Lighting Times & Torah Portions

Board of Directors and Affiliates

Rabbi	Michele Paskow
Cantor	Michael Russ
President	Earl Rosado
Executive Vice President	Michael Hollander
VP/Membership	Dan Brandler
VP/Fundraising	Robert Sternberg
VP/Programs	Sandy Leon & Miko Sion
VP/Havurah	Harlan Gould
VP/Religious School	Lisa Marlow
Social Action	Suzie Fintz
Secretary	Ruth Ann Rossman
Treasurer	Erik Breiter
Financial Officer	Nirit Levy
Preschool	Lindy Schneider
Sisterhood	Carla Shaw
Men's Club	Herschel Berger
Temple Administrative Assistant	Marilyn Hollander
Preschool Director	Lindy Schneider
Preschool Office Mgr.	Robyn Voigt
Preschool Newsletter	Robyn Voigt
Rel. School Administrator	Meridith Patera
Chai Lites Editor	Suzanne Epstein
Youth Group Advisor	OPEN
Gift Shop	Bobbie Sion
Photography	Max Patera

Social Action

A huge thank you goes to everyone who donated anything for Mitzvah Day. We helped several organizations by collecting the following:

1. 4 large boxes of school supplies were delivered to kids in need in our Simi schools.
2. 35 movies and 3 DVD/VCR's were sent to boys at the Camp Kilpatrick juvenile detention facility.
3. 2 large boxes of athletic shoes went to Nike to be recycled for material used to build playground surfaces.
4. Thanksgiving food went to 30 Many Mansions families. All they needed to do was add turkey and pie for a complete Thanksgiving dinner!
5. Our kids made more than 36 book tags for kids in Darfur.
6. We sent 1 grocery bag full of Halloween candy and 29 letters and cards to Operation Gratitude
7. Leftover Mitzvah Day t-shirts and a case of cream rinse were given to the Samaritan Center.

We can all be proud of our contributions to this year's Mitzvah Day. And if that wasn't enough - our congregation got 'gelty' for Hanukkah and collected enough money to purchase grocery cards totaling \$100 that will be included in gifts for Many Mansions families.

Habitat for Humanity has started building in Simi on Royal Ave near Sequoia. Watch for more details on a CBE volunteer day for a Sunday in the near future.

We continue to volunteer to *Feed the Needy* the third Saturday of every month. Thanks to the Women of CBE and Doris Foster and Deborah Bass who took the lead for this task for the last 2 months. Please consider organizing a group from your affiliate, havurah, family or friends to help out and contact me at 818-298-5433 to be scheduled.

Your Mitzvah Maven,
Susie Fintz

TU BISHVAT WILL BE ON JANUARY 22, 2008 – Celebrate the Jewish New Year for Trees by planting a tree or plants in your garden. Also, you can have trees planted in Israel in honor or memory of loved ones. Contact the Jewish National Fund at: (323) 964-1400 or (800) 542-TREE.

The minor holiday of Tu BiShevat symbolizes more than just a birthday, or an Arbor Day. Trees signify growth, renewal and the continuity of life. In fact, the Torah itself is compared to a Tree of Life. At this start of the New Year and a new cycle of nature, may we renew our commitment to Torah, to our beautiful Jewish traditions, and to our own lives. L'Chaim!...To Life!

Bar Mitzvah

Hello,

My name is Marshall Krakauer. I am in the seventh grade and attend Sinaloa Middle School. My favorite subjects are Math and Science. In my free time, I enjoy playing video games and solving brain teasers. During baseball season, I am an umpire.



I am looking forward to my Bar Mitzvah on January 26, 2008. It is the culmination of my years of hard work. For my mitzvah project, I am recycling cans and bottles and donating the proceeds to the California Association of Food Banks. I have really enjoyed studying Judaism and learning Hebrew at CBE.

WELCOME TO THE FOLLOWING NEW AND RETURNING MEMBERS

Mark & Beth Aragon
Glenn & Lisa Barry
David (Buzz) & Leslie Buchanan
Michael & Michele Cohen
Gary & Susan Doctorow
Charles & Leah Duley
Seth Robert Eisman
Gloria Grossman
Elena Hananel
Gerald & Gloria J. Hasson
Lawrence & Martha Kaufman
Ron & Gail Mittelman
Leonard Persky
Alice Walsh

A POEM FOR TU BISHEVAT

THE MAN WHO PLANTS A TREE

by Richard J. Dorer

The man who plants a tree
Must first prepare the fruitful earth
By moving duff or sod,
And cherish in his heart a silent prayer
For he is working hand in hand with God.

It is a sacred task, to plant a tree,
That always should be done on bended knee.

The artisans may strive for years to raise
A structure reaching to the vaulted sky.
That well deserves the everlasting praise
And words of wonderment from passerby,
But he, the humble man who plants a tree,
Is fashioning His nation's destiny.



JLC Update

Over the past few months there have been many times when I wanted to let you know what was happening with the JLC but since so many things were up in the air it seemed inappropriate to give you incomplete information.

Let's start with our board of directors personnel. Recently Wolf Ascher, a long time JLC board member, left the board. He is dearly missed by all of us on the board. But as good fortune would have it, we have a new member who, although he can't take Wolf's place, is a very welcome addition to our board. He is Bruce Cohen, a controller at a company in Inglewood, but a local Simi Valley resident. His quiet sense of humor along with his financial insight makes him a welcome new board member. Also Debbie Knecht stepped down as secretary (while remaining as a director) and Illise Holran has taken her place.

Another major change in our board is the departure of Steve Breuer as a consultant. This was a very amicable separation and Steve has let us know that we can consult with him periodically if necessary. We will miss him and wish him the best. He felt that, with Jewish Life Center retaining legal counsel, his services were not as necessary as before.

Speaking of Legal Counsel, the board of directors of the JLC felt it necessary to retain an attorney. I will explain why in greater detail in the next paragraph. After interviewing different attorneys, we have retained the law firm of Myers, Widders, Gibson, Jones and Schneider, L.L.P., in Ventura. Our board has specifically dealt with Roy Schneider and his son Theodore (Ted). Their firm is diversified in its practice but one of their specialties is real estate transactions. Besides being a partner in the firm, Roy Schneider is also past president of Temple Beth Torah in Ventura and Jewish Federation of Ventura. The Schneiders have provided us with much needed counsel and information in our proceedings recently.

As some of you may know, the JLC voted to put the land at Royal and Corto up for sale. The primary reason for this is because we have been interested in securing a Church/Preschool combination up for sale on Bonita Street off Madera. Some of you may have attended the services we had there late in August. Our purchase would have depended on the sale of our land. There was another religious group bidding on the church and right now the elders of the church at Bonita have decided to accept their offer over ours. At this point I would like to praise CBE President Earl Rosado. It was his leadership, tenacity, and personal commitment that kept us in front of the Bonita elders, even after this stronger offer came in. He was the one who gave us a fighting chance to acquire the Bonita church.

Also a group of five individuals worked very hard on the viability of the purchase and sale project for the JLC/CBE boards. They became affectionately known as the Bonita Committee. This group was chaired by Jeff Ringer (JLC board member). The other members were Carole Fineberg (JLC board member and past CBE President), Illise Holran (JLC Secretary and CBE Preschool board member), Susie Fintz (CBE board member and a past congregation President) and Eric Bordo (CBE member at large). This is a great group of people who work very well together. At their meetings they have looked at the well-being of the entire community. They truly understand that if we, as a community, are to grow, all three aspects (congregation, preschool, and religious school) of our future home must be dealt with and each of their needs must be met. The Jewish Life Center board has not met since the Bonita decision, but I can assure you we will be looking at any viable option that comes along for the Jewish community of Simi Valley and Moorpark.

We do have our Royal/Corto property in escrow right now. The potential buyer is a company called Community Dynamics. They are based in Santa Monica. They are planning to build approximately 30 homes on the site. The final price of the property will be determined by the number of homes the city of Simi Valley gives Com-Dyn permits to build. The escrow period is approximately 15 months. That is the typical time it takes to do all the studies and get all the permits needed to build on raw land. To view the concepts that they want to develop on the Royal/Corto land follow these instructions. Go to www.com-dyn.com. The opening page shows a sandcastle. On the left side of the home page is a list of links. Click on the Communities link, followed by the link to Sonria. This is the basic concept that Com Dyn wants to use at Royal and Corto.

We have also had some news on our property tax status for the land at Royal and Corto. After almost a year of quiet negotiation, and through the persistence of Craig Foster, we were able to get our property tax bill reduced by almost half.

That brings up the subject of donations. Although the land is up for sale and there is a possibility that we will be buying the church on Bonita or another property, WE STILL NEED YOUR DONATIONS. The board is responsible for maintaining the property and keeping it in good shape. If you still owe on your original pledge, please pay the balance. As we approach the New Year, what better way to ensure our future and legacy by giving a meaningful contribution to the Jewish Life Center, the future of Judaism here in Simi Valley and Moorpark.

Thank you,

Michael Mutal, JLC President

Thank You to our Oneg Sponsors

NOVEMBER 9, 2007

THE LEON FAMILY IN HONOR OF ALAN & SANDY'S 30TH ANNIVERSARY

THE MARLOW – GOULD FAMILY IN HONOR OF MARK'S BIRTHDAY.

THE ROSENSTEIN FAMILY IN HONOR OF RYAN'S BIRTHDAY

NOVEMBER 16, 2007

THE GLAZER FAMILY IN HONOR OF COLBY'S BAR MITZVAH

THE KATELL FAMILY IN HONOR OF GABE & JILL'S 19th ANNIVERSARY

PENNY NEUGROSCHL IN MEMORY OF HER MOTHER, LEONA EDELSTEIN

NOVEMBER 30, 2007

THE LEFTON FAMILY IN HONOR OF RYAN LEFTON'S BIRTHDAY

THE RIBSTEIN FAMILY IN HONOR OF RYAN RIBSTEIN'S 25TH BIRTHDAY

DECEMBER 7, 2007

THE FAMILIES OF THE SECOND GRADE CLASS

THE ROESCH FAMILY IN HONOR OF JEFF'S 14TH BIRTHDAY

THE RUSS FAMILY IN HONOR OF CANTOR MICHAEL'S BIRTHDAY

JILL AND GABE KATELL IN HONOR OF SHAWNA'S BIRTHDAY

DECEMBER 14, 2007

DAVID GERING IN HONOR OF HIS BIRTHDAY

THE SION FAMILY IN HONOR OF MIKO AND BOBBIE'S ANNIVERSARY

THE HOLLANDER FAMILY IN HONOR OF ERIN'S 17TH BIRTHDAY

LAURA TEPFER IN MEMORY OF HER GRAND-MOTHER, LIBBY CHAIT

DECEMBER 21, 2007

THE PROTTER FAMILY IN HONOR OF HAL'S BIRTHDAY

THE FINTZ FAMILY IN HONOR OF STEVE'S BIRTHDAY

Women of CBE

The Holiday season was off to a running start with our varied Sisterhood events. In November, the multi-talented Susie Fintz led a workshop in iris folding techniques. We all had a lot of fun and went home with gorgeous Hanukkah cards – almost too pretty to give away!

Our November 18 Hanukkah Boutique was the most successful ever. We had lots of happy vendors, and the Gift Shop did really well too. Thank you to Meridith for organizing the Boutique and to all the women – and a few terrific men – who helped make the Boutique so rewarding for everyone involved.

Ronnye & Penny did a fabulous job of arranging our Hanukkah Party at Meridith's clubhouse. From the decorations to the desserts, it was a delightful evening – and there were only one or two fistfights over the gift exchange results!

Now we're looking forward to 2008. At our general meeting on January 8, Cantor Russ will present a program on Jewish music - historical and modern, from Reggae to classical, old and new; what makes music Jewish. You don't have to be a Sisterhood member to attend our general meetings, but it's never too late to join.

Our February meeting will be a Shabbat workshop led by Ruth Ann Rossman. We can't wait to see what new nuggets of information she'll pass on to us.

The Donor Luncheon for the donor year from September 1, 2006 to August 31, 2007 will be held on February 17. We have to hold it in February because our calendar is just too crowded in the fall. You will be getting your donor information during January, but even if you didn't make it, or weren't even a member last year, you're more than welcome to join us. See the website for more information on how to attend.

As always, we have been busy helping others. In November, The Women of CBE sponsored, prepared and served a Thanksgiving feast at the Methodist Church to the homeless. In addition to a generous donation to the Temple Hanukkah Dinner Party, we provided the Preschool with large fillable dreidels and gelt. We also gave gelt and dreidels to all the Religious School students. Moorpark College Hillel received several gift cards from us that they used in a raffle at their Hanukkah Feast, where canned food for the needy was donated. Remember, it is your support of us, through your purchase of mitzvah money and tribute cards, oneg sponsorships, and attendance at our events, that makes our donations possible.

Wishing you a healthy and enjoyable 2008!

Carla Shaw, President

CBE PHOTO GALLERY



Rabbi Michele and Doris Bass enjoy refreshments after the Interfaith Thanksgiving Service at St. Francis Church



Seventh graders make a purchase at the November 18 Hanukkah Boutique



Rabbi Michele checks out the jewelry selection at the Hanukkah Boutique



Carla Shaw's Second Grade class helps lead the Hanukkah/Shabbat service on December 7



Program VP Sandra Leon sets up for the CBE Hanukkah Dinner Party on December 9 at Valley View Middle School.



Rabbi Michele, CBE President Earl Rosado, Cantor Russ and the cast of Zlateh the Goat light the menorah at the Temple Hanukkah party.



The Sixth Grade class presents "Zlateh the Goat" at the CBE Hanukkah Party



Harry Shore and Adam Protter in "Zlateh the Goat".



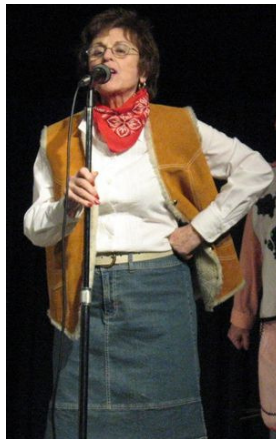
Ari Ringer, Sandy Weinstein, Brandon Lefton, Jessica Stafford.



"Chai Noon" Hanukkah Play by Meridith Patera



More "Chai Noon"



A good time was had by all!

Platinum

Cantor Michael Russ - 20 years of dedication



Diamonds



Congregation B'nai Emet - 30 years of tradition

and Gold

50 years of service to our community

Benefit Concert

in celebration of the momentous anniversaries of

Cantor Michael Russ

and

Congregation B'nai Emet

Starring Cantor Michael Russ

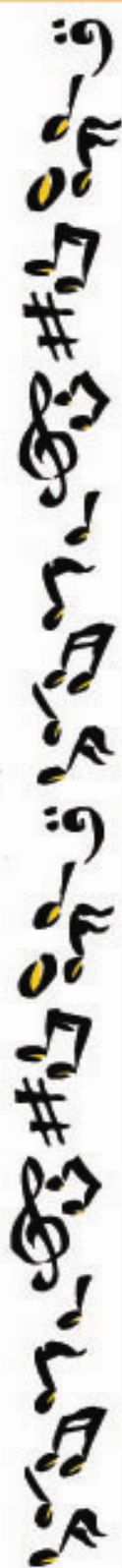
with Special Guest Star Adina Russ

*Sunday February Tenth, Two Thousand and Eight
Thousand Oaks Civic Arts Plaza - Janet and Ray Scherr Forum Theatre
2100 East Thousand Oaks Boulevard, Thousand Oaks, California*

Two O'clock in the Afternoon

Private Benefactor/Patron Reception Following Concert

Proceeds Benefit Congregation B'nai Emet



For printable reservation form or to advertise in the concert program, go to
www.congregationbnaiemet.org.

For more information, email CBEconcert@yahoo.com.

CBE Concert



Platinum Diamonds & Gold

Don't forget Sunday February 10, 2008! It is just around the corner and time flies by so quickly. Tickets are selling well so don't miss out! Many non-Temple members as well as

Temple members have already ordered tickets and time is running short! Seating is limited and a full house is expected.

Remember, this will be an entertaining fun afternoon. You don't have to be Jewish to enjoy the music. Don't expect a Cantor's recital of Jewish music. There will be "Broadway" music, pop music, music you might actually hear on the radio. Bring your friends and neighbors and request to sit together. The concert will be at the Thousand Oaks Civic Art Plaza – Janet and Ray Scherr Forum Theatre 2100 East Thousand Oaks Boulevard, Thousand Oaks, California at 2 P.M. And, of course, there will be the special gathering following the concert for those who choose to purchase Benefactor or Patron tickets. That list is also growing. Don't miss the fun and the music with Cantor Russ' unique style of humor as well as great music.

Many who are unable to attend have been very generous and have sent in monetary contributions to honor Cantor Russ as well as the congregation. Believe it or not, people are coming from as far as Oregon and Colorado just to enjoy this rare performance of Cantor Russ and Adina Russ!

We would love to have people participate in this celebration with advertising or just wishing "Mazel Tov" in the souvenir program. If you are interested in advertising in the concert souvenir program, or to help in anyway with the concert, please contact Cantor Russ at (818) 360-3468 or call the temple office at (805) 581-3723.

Don't wait any longer! Order you tickets now! You don't want to miss this exciting event!



Recent Donations

Building Fund

Karen and Keith Zook – in memory of Louis Weiss

Memorial Donations

Sheldon and Joan Liebmman – in memory of Benish Landau
Anthony and Laura Luskin – in memory of Abraham Luskin
and Frida Pichkhadze

Robert and Tami Finkbeiner – in memory of Shirley
Zimmerman

Alan and Sandra Leon – in memory of John Levin and
Ben De Nunez

Judith Miller – in memory of Esther and Theo Frankel
Naomi Chusid – in memory of Aaron Saul Chusid
Miriam and Thomas Hintz – in memory of Aaron Saul Chusid
Steven and Holly York – in memory of Gerald York
Peppi Lamm – in memory of Erna Handler

Religious School Donations

Sally, Ryan and Brandon Lefton – in memory of Jack Lefton

Rabbi's Discretionary Fund

Mark and Lynn Hannan – in memory of Hi Gusto
Joseph and Elena Koenka – in memory of Sara Koenka

Social Action Donations

Steve and Ruth Ann Rossman

JLC Donations

Marion Pfeffer – in memory of Rose Schwartz

Additional High Holy Days Donations

Boris Belyi
Susan Cohen
Steven and Lois Friedman (JLC)
Arnold and Marilyn Kaufman – in memory of Sarah and Joseph
Kaufman, Philip Goodman and Tim Wolff

Cantor Concert General Donations

Mim Collins and Family
Theodore and Bunnie Karoff
Sheila Kubik
Nate and Margaret Nusbaum
Wolf and Nubia Ascher
Frances and Debra Chaplan
Philip and Norma Clousner
Robert Nolan
Jeffrey A. Beaumont, Esq.
James Cagle
Fred and Phyllis Krakauer
Ted and Susan Schwartz
Joyce A. Aloisi
Robert and Tami Finkbeiner
Arnold Levy
Leonard and Mary Lou Williams



JOIN THE VALLEY JEWISH COMMUNITY ON SUPER SUNDAY, FEBRUARY 10

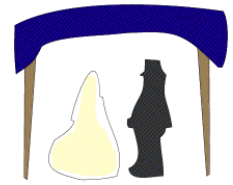
The entire LA Jewish community is coming together once again for Super Sunday, this year on February 10, 2008. Close to 1,000 volunteers will head out to The Jewish Federation's Valley location in West Hills (22622 Vanowen, west of Shoup) to telephone more than 20,000 donors and secure life-saving pledges.

This day of fundraising jumpstarts The Jewish Federation's Annual Campaign, which supports programs that feed hungry families, assist home-bound seniors; provide relief and educational opportunities and help others in the Jewish and greater communities here at home, in Israel and around the world. The Federation also provides instant, emergency funding to those affected by global crises, such as the recent California wildfires.

Funds raised on Super Sunday will go to support local programs right here in the Valley too, some which benefit our synagogue directly. Wouldn't it be a great show of strength and pride to join the Super Sunday effort as a united, synagogue community? To join fellow Congregation B'nai Emet members and the wider Jewish community on Super Sunday, please contact Leah Kitz at 818-464-3215 or visit www.JewishLA.org to register online.

The day is broken into shifts, so come out to 22622 Vanowen in West Hills when you can on February 10. Activities for the children are available, and at the end of the day, we will all have the satisfaction of knowing we helped raise \$2 million that will make a profound impact on thousands of lives. And, don't forget to make your 2008 pledge to the Federation, either online or by answering the call on February 10.





Birthdays

Jan 01	Lee Smith	Jan 19	Fredyce Holland	Feb 08	Sung Friedman
Jan 01	Alexander Stanton	Jan 20	Steven Richter	Feb 10	Tyler Wohlner
Jan 02	Stephanie Bergmann	Jan 21	Lucas Cohen	Feb 11	Lois Friedman
Jan 02	Lloyd Picker	Jan 21	Eric Leon	Feb 13	Suzanne Epstein
Jan 03	Jason Nadler	Jan 24	Nathan Apfelbaum	Feb 14	Craig Foster
Jan 03	Leonard Persky	Jan 25	David Samuel Friedman	Feb 14	Lynn Salberg
Jan 04	Luke Bannon	Jan 25	Evan Gering	Feb 16	Cindy Shilkoff
Jan 04	David James Rossman	Jan 25	Marshall Krakauer	Feb 18	Pauline Priva Diamond
Jan 05	Nicole Bordo	Jan 25	Stanford Lovett	Feb 19	Richard Fineberg
Jan 08	Wendy Dager	Jan 27	Anne Levy	Feb 20	Lindy Schneider
Jan 08	Shelby Doctrow	Jan 28	Stephen Epstein	Feb 21	Jenna Barry
Jan 11	Bailey Gould	Jan 30	Morgan Horowitz	Feb 21	Ronald Schneidereit
Jan 11	Laura Tepfer	Jan 30	Sophie Schwartz-Bannon	Feb 26	Laura Luskin
Jan 12	Mark Friedman	Feb 02	Leslie Buchanan	Feb 27	Lillian Knecht
Jan 16	Gary Doctrow	Feb 02	Ron Mittelman	Feb 27	Jack Stafford
Jan 16	Marilyn Hollander	Feb 03	Gary Micon	Feb 28	Shayna Apfelbaum
Jan 16	Joshua Katell	Feb 04	Jan Auerbach		
Jan 16	Daniel Avram Sternberg	Feb 07	Harry Friedman		
Jan 18	Aaron Cohen	Feb 08	Seymour Botan		
Jan 18	Jeff Schleien	Feb 08	Seth Robert Eisman		

Anniversaries

Jan 04	Keith and Lynne Kelly
Jan 04	Al and Nirit Levy
Jan 07	Jeffrey and Dawn Ringer
Jan 23	Anthony and Laura Luskin
Jan 25	Michael and Marilyn Hollander
Jan 27	Michael and Wendy Dager
Feb 28	Mark and Beth Aragon

A "REFUAH SHELEYMAH" (full and quick recovery) to Harlan Gould.

Tired of high gas prices?

Hate to drive at night?

Car in the shop?

Don't let any of those things stop you from coming to services.

Max Patera would like to match up drivers and riders from different areas.

If you are interested in getting or giving a ride to temple, contact Max at

maxy_david@lycos.com

or (805)298-0702.



Yahrzeits

Jan 02	Harry Luger	Tevet 24	Feb 01	Bernard Schwartz	Shevat 25
Jan 02	Fannie Woodrow	Tevet 24	Feb 02	David Bloch	Shevat 26
Jan 03	Morton Auerbach		Feb 02	Joseph Hananel	Shevat 26
Jan 03	Max Rabin	Tevet 25	Feb 02	Nettie Riff	Shevat 26
Jan 03	Paul Sytten	Tevet 25	Feb 04	Harold "Heshy" Grossman	Shevat 28
Jan 04	Irving Brody		Feb 04	Jay A. Keimon	Shevat 28
Jan 05	Carolyn Cohl	Tevet 27	Feb 04	Gertrude Wechter	Shevat 28
Jan 05	Patricia Geiger	Tevet 27	Feb 04	Eileene Winters	Shevat 28
Jan 06	Herbert Glick	Tevet 28	Feb 05	Bennett Krakauer	Shevat 29
Jan 07	Edith Greenberg	Tevet 29	Feb 06	Hyman Bloch	Shevat 30
Jan 07	George Liebmman	Tevet 29	Feb 07	Morris Hammerman	Adar-I 1
Jan 08	Richard Schatz	Shevat 1	Feb 08	Edith Miller	Adar-I 2
Jan 09	Sylvia Krebs		Feb 08	Ruth Wilkerson	Adar-I 2
Jan 09	Charles Stein	Shevat 2	Feb 09	Donald Alvarez	Adar-I 3
Jan 11	Robert Gurstein	Shevat 4	Feb 11	Nathan Hentell	Adar-I 5
Jan 11	Willard Levin	Shevat 4	Feb 11	Philip Nemchek	Adar-I 5
Jan 12	Rochelle (Shelly) Richter	Shevat 5	Feb 11	Benjamin Zimmerman	Adar-I 5
Jan 13	Darrius Eugene Simpson-Menke	Shevat 6	Feb 12	Geneva Alvarez	Adar-I 6
Jan 14	Stanley Weinstein	Shevat 7	Feb 12	Robyn Libitsky	Adar-I 6
Jan 15	Bernie Stern	Shevat 8	Feb 12	Max Perlson	Adar-I 6
Jan 17	Beatrice Levy	Shevat 10	Feb 13	Jack Trachtenberg	Adar-I 7
Jan 18	Sidney Scheinert	Shevat 11	Feb 14	Abraham Shain	Adar-I 8
Jan 20	Ruth Kaye	Shevat 13	Feb 14	Isadore Sharapan	Adar-I 8
Jan 20	Jennie Savoy	Shevat 13	Feb 15	Eddie Oblas	Adar-I 9
Jan 21	Allan F. Finnk	Shevat 14	Feb 15	Dorothy A. Rabin	Adar-I 9
Jan 21	Minnie Fox	Shevat 14	Feb 17	Paul H. Pulver	
Jan 21	Sybil Kaplan	Shevat 14	Feb 18	Jack Shuster	Adar-I 12
Jan 22	Beverly Pedowitz	Shevat 15	Feb 19	Estelle Flaxman	
Jan 23	Ken Stern	Shevat 16	Feb 21	Julie Heimann	Adar-I 15
Jan 24	Shirley Richter	Shevat 17	Feb 22	Anne Klein	Adar-I 16
Jan 24	Freda Trunk	Shevat 17	Feb 22	Nathan William Kritzer	Adar-I 16
Jan 24	Stella Zaltzman	Shevat 17	Feb 22	Sabina Metzger	Adar-I 16
Jan 27	Hinda Miller	Shevat 20	Feb 22	Mildred Ruth Picker	Adar-I 16
Jan 27	David Singer	Shevat 20	Feb 22	Fanny Strassburger	
Jan 28	Jacob Louis Diamond	Shevat 21	Feb 23	William Finkbeiner	Adar-I 17
Jan 29	Ralph Fintz	Shevat 22	Feb 26	Charlie Hyman	Adar-I 20
Jan 29	Arthur Leon	Shevat 22	Feb 27	Edward Abe Lindenbaum	Adar-I 21
Jan 29	Marian Levin	Shevat 22	Feb 27	Sigmond Neugroschl	
Jan 30	Nathan Brownstein	Shevat 23	Feb 28	Dorothy R. Hasson	Adar-I 22
Jan 31	Frieda Finkbeiner	Shevat 24	Feb 29	Jacob Landau	Adar-I 23



Please check the current Yahrzeit information on the data sheet you received in your membership packet. Verify its accuracy and call the office with any changes or new Yahrzeit information.

During the year, you will receive reminders for upcoming Yahrzeit dates. We want to have complete and accurate information.

Call Michael Hollander with any questions regarding Yahrzeit data.

Thank you.



How to observe a Yahrzeit at C.B.E

Light a 24-hour memorial candle in your home at sundown on the evening that begins the yahrzeit (anniversary of death.) It is also customary to attend Shabbat services at Temple and recite the Kaddish. At Congregation B'nai Emet, names of your loved ones are read on the Friday evening **before** the Yahrzeit. If you observe the **Gregorian (English)** date, the name will be read **following** the yahrzeit date. It is suggested that you make a contribution to the Temple so that the memory of your loved one can be honored with an act of love and kindness.

Condolences

To Don and Michelle Forman on the passing of Don's mother, Jean Forman. *May her memory always be for a blessing.*

To the Koenka Family on the passing of Joe's mother, Sara.

We would like to thank Rabbi Michele and Cantor Russ for the warm and thoughtful service in honor and memory of Joey. We also want to thank all our friends and fellow congregants who made donations in honor and in memory of Joey. Thank you once again to sisterhood and Geri Brandler who asked Barbara Poehls and Barbara Hoff to set up and help so us at our house after the service. All the good thoughts, calls and visits were deeply appreciated by us.

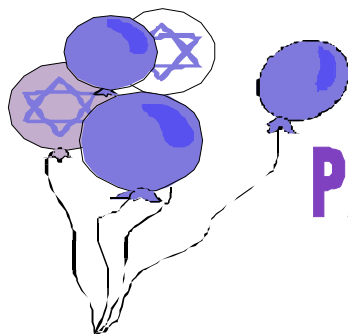
Sincerely, Karen, Ryan and Brittany Ribstein

SIMI'S HOUSE OF JUDAICA

HUGE JANUARY CLEARANCE SALE!!!

PRICES SLASHED ON:

**MENORAHS
GIFTWARE
JEWELRY**



**MEZUZZAHS
PASSOVER ITEMS
AND MORE!**

**Congregation B'nai Emet
4645 Industrial St., Ste.**

2-C

Simi Valley, CA

(805) 581-3723

Gift shop hours:

Friday - 7:30 PM

Sunday - 9:00 - 9:30 AM

11:45 AM - 12:15 PM

and by appointment

NEED A CARD? MAKE IT A DONATION!

Send a thoughtful greeting for sympathy, birthdays, congratulations, or just to reach out to someone!



Cards from the Women for Reform Judaism's YES Fund go to support projects for Youth, Education and Special Projects here and in Israel, such as rabbinic training and Israeli preschools for needy children.

Each card is hand written and mailed for you; all you have to do is contact us with the information and send a check made out to CBE Sisterhood.

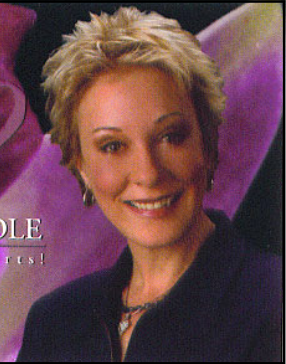
Prices start at \$2.50 for a plain card and \$5.00 for a colored picture card.

Other items are available. To purchase a card, contact Lynne Kelly at lkelmom@aol.com.

Office: 805.584.3683
Pager: 805.378.7453
Fax: 805.584.3689

JO ANN POOLE
Poole Your Efforts!

E-Mail: JoAnn@JoAnnPoole.com
Web: www.JoAnnPoole.com



Get on the Internet Bus !



RAIN Network-Public Internet Broadcasting
Regional Alliance for Information Networking
www.rain.org
1-888-770-7821

SIMI'S HOUSE OF JUDAICA

Located
at CBE



For all
your
Judaica
Needs!

Call (805) 581-3723
for more
information, hours
of operation &
holiday boutiques.

Holiday Items
Shabbat Needs
Bar/Bat Mitzvah Registry
Huge Selection of Jewelry
Kipot & Tallises
Gifts for All Occasions
Blue Sky Gifts
Mah Jongg Goodies
Greeting cards
Personalized kippot &
invitations by special order

Imagine Your Ad Here

Business Card size

\$100.00 per year
\$45.00 for 1 issue

1/4 page ad

\$165.00 per year
\$65.00 for 1 issue

1/2 page ad

\$265.00 per year
\$95.00 for 1 issue

Full page flyer

\$420.00 per year
\$130.00 for 1 issue

Call Temple office
For more information



OPEN 7 DAYS

Michael's Flowers

1951 Sequoia Ave.
(Corner of L.A. & Sequoia)
Simi Valley, CA 93063

(805) 527-9104
(800) 554-9083
(805) 522-1705 Fax



Steve's

RAZOR'S EDGE

4421 Alpine Street
Simi Valley, California 93063

Phone: 805 522-1071



Lois Friedman

Independent Consultant

CM ID 07802278

151 Laurel Ridge Drive

Simi Valley, CA 93065

Home: (805) 522-2356 • Cell: (805) 217-3128

LoisFriedmanTTCM@msn.com

www.mycmsite.com/loisfriedman

your life | your story | your way

I accept Visa, MasterCard,
Discover
And American Express
Pro Pay & Pay Pal

TOMBOY



Lois Friedman

Consultant

ID #930902

151 Laurel Ridge Drive

Simi Valley, CA 93065

Phone: 805-522-2356

Cell: 805-217-3128

LoisFriedmanTTCM@msn.com

www.tomboytools.info

Women.Tools.Knowledge
Pass it on

New Directions Event Planning, Inc.

B'nai Mitzvahs • Weddings • Anniversaries • Birthdays
Theme Parties • Corporate Events • Picnics
Grand Openings • Holiday Celebrations

- Theme Decor
- Photography
- Videography
- Floral Design
- Entertainment
- Props / Rentals
- Dance Giveaways



- Catering
- Balloons
- Locations
- Invitations
- Bands/DJ's
- Party Favors
- Transportation

*Eighteen Years of
Successful Events*

*Voted #1 in
Ventura County*

We will produce the entire event or coordinate any part of it!

(805) 581-2602

www.NewDirectionsEvents.com

"Voted Best Auto Repair & Body Shop in Simi Valley"

Auto Body Unlimited, Inc. Since 1986

BEFORE **AFTER**

- Written Warranty
- Insurance Deductible
- Financing Available
- Mufflers, Exhaust & Intake
- Color Match Guarantee in Writing
- Paintless Dent Repair

M-F 7:30-6PM • Most Sat 8-12

583-4848

Auto Body Unlimited Inc
4610 E. Los Angeles Ave.
Simi Valley
www.thecrashdoctor.com

NEED A RENTAL? Enterprise 805-582-6444

Schedule of Services, Candle lightings, & Torah Portions

All Candlelighting Times are for Simi Valley

<u>Date</u>	<u>Candlelighting</u>	<u>Service</u>	<u>Torah Portion</u>
Jan. 4/27 Tevet	4:40 pm	Tot Shabbat Service 7 pm	Vayera—Ex. 6:2-9:35
Jan. 11/5 Shevat	4:46 pm	Shabbat Service 8 pm	Bo—Ex. 10:1-13:16
Jan. 18/12 Shevat	4:53 pm	Shabbat Service 8 pm	Beshalach—Ex. 13:17-17:16
Jan. 25/19 Shevat	5:00 pm	Shabbat Service 8 pm	Yitro—Ex. 18:1-20:23
January 26		Bar Mitzvah of Marshall Krakauer 10 am	
Feb. 1/26 Shevat	5:07 pm	Tot Shabbat Service 7 pm	Mishpatim—Ex. 21:1-24:18
Feb. 8/3 Adar I	5:14 pm	Shabbat Service 8 pm	Terumah—Ex. 25:1-27:19
Feb. 15/10 Adar I	5:20 pm	Shabbat Service 8 pm	Tetzaveh—Ex. 27:20-30:10
Feb. 22/17 Adar I	5:27 pm	Shabbat Service 8 pm	Ki Tisa—Ex. 30:11-34:35
Feb. 29/24 Adar I	5:33 pm	Shabbat Service 8 pm	Vayakhel—Ex. 35:1-38:20

Check out our web site at <http://congregationbnaimet.org>

Congregation B'nai Emet

P.O. Box 878

4645 Industrial Street

#2C

Simi Valley, CA 93062-0878

DATED MATERIAL



—Please do not delay delivery—

Chai Lites Bi-Monthly Newsletter

Volume 29 Issue 2