

9 West Bonita Drive
Simi Valley, CA 93065

Congregation B'nai Emet

Phone: 805-581-3723
Fax: 805-581-3160

July-August, 2016
Sivan-Tammuz-Av, 5776

Volume 37, Issue 5

C.B.E. Chai Lites



Rabbi's Message



The light is on and we're home . . . come on in!

Dear Friends,

One of my favorite Jewish jokes goes as follows:

When I was young, I asked my father, "If you don't believe in God, why do you go to synagogue so regularly?" My father answered, "Jews go to synagogue for all kinds of reasons. My friend Garfinkle, who is orthodox, goes to talk to God. I go to talk to Garfinkle."

Whatever your reason is for coming to shul, belonging to the synagogue and supporting the Jewish community is important, meaningful and rewarding.

Jewish life is both home and community based. An important aspect of Jewish living is daily observance or connection in some way – from reading a Jewish book (study), to saying a prayer (personal devotion), to keeping a part of kosher (spiritual connection), to acting ethically with caring, compassion and kindness (chesed), and more. Belonging to the synagogue connects you to the Jewish community, your faith and provides an "extended family". It is important to be a synagogue member to help support the Jewish community. I've noticed that actively participating in Temple life deeply enriches the lives of those involved in so many ways. Our CBE community is especially warm, welcoming, and "heimish," as everyone who has visited or joined us can agree!

We all have friends and relatives who do not belong. I would like to suggest that you invite them to come and join us. Like the joke expresses, they can come for social or religious events – what is important is that they join to show their support for the Jewish community, Jewish education and know that the Temple is there to be of service.

Our Jewish tradition teaches us that we are part of a family, the House of Israel. We are taught to help one another and assist each other. In our day, when so many people call the Temple for guidance, for help, for a family event, everyone should belong to a synagogue and be counted as part of the family.

We will have services and activities throughout the summer. This past Shabbat was our first Shabbat Under the Stars of the summer – everyone enjoyed the delicious food, schmoozing, the beautiful children, and singing the prayers on our patio overlooking the beautiful Simi hills. It was relaxing, uplifting and joyous! Bring your friends, make new friends! You will be filled with contentment and have a sense of spirituality and meaning.

Put "Friday night @ CBE" on your calendar! Lehitraot – להיתראות
See you in Shul!

Rabbi Michele Paskow

Shabbat Under The Stars - July 22 and August 26

Look for flyers in this issue to see what to bring for the dinner based on your last name

Note: They are not the same



Board of Directors and Affiliates

Rabbi
Michele Paskow

Cantor
Michael Russ

President
Ryan Richmond
Executive Vice President

Debbie Knecht
Secretary

Linda Mann
Treasurer

Les Sutton
Co-VPs Membership
Frieda Bahr and Max Patera

VP Fundraising
Michael Mutal

Co-VPs Programs
Alan Mann and Sanford Miller

VP Havurah
RuthAnn Rossman

Co-VPs Religious School
Emily Doepping and Frieda Bahr

VP Social Action
Jill Katell

Financial Secretary
Eric Bordo

Sisterhood President
Meridith Patera

Men's Club President
Michael Enright

Temple Administrative Assistant
Marilyn Hollander

Preschool Director
Lindy Schneider

Preschool Office Mgr.
Robyn Voigt

Religious School Administrator
Meridith Patera

Chai Lites Editor
Suzanne Epstein

Gift Shop
Bobbie Sion

Choir Director
Irwin Cohen

Photographers
Ken Bahr and Max Patera

**The minutes of CBE Board Meetings
are available to all members in
the Temple office**

**Black and white copies of the
newsletter are also available in
the Temple office**

Bulletin Bytes

OPPORTUNITIES for Involvement:
ATTEND Shabbat services
ESTABLISH a spiritual and
emotional bond with
Judaism and the Jewish people.
ENRICH your knowledge
with Rabbi Michele, guest
speakers and adult education
PROMOTE AND SUPPORT
Jewish life in Simi and
Moorpark through:
Sisterhood, Men's Club,
Pre/ Religious School,
Havurah, Religious and
Community Services.



DATES TO REMEMBER

First day of Religious School
Sunday Sept. 11

Erev Rosh Hashanah Sunday, Oct. 2
Rosh Hashanah, Monday, Oct. 3

Kol Nidrei (Erev Yom Kippur)
Tuesday, Oct. 11

Yom Kippur, Wednesday, Oct. 12

*If you would like to learn a Hebrew
part for one of the services, please
speak with the Rabbi.*

THOUGHT ABOUT YOUR LEGACY?

As you update your Will or
Trust, please include CBE as a
beneficiary. Our President, Ryan
Richmond, or Treasurer, Les
Sutton, will be happy to work
with you.

From Generation to Generation...
Making your family part of ours.

Men's Club

The Men's Club meets for breakfast at
9:15 AM on the first Sunday of the month
and on the second Sunday of the month at
The Junkyard Café, 2585 Cochran Street,
Simi Valley. For more info or to RSVP,
call Alan Mann, (805) 341-3836 or
write to alanmann60@att.net

Table of Contents

Content	Page
Rabbi's Message Shabbat Under the Stars	1
Bulletin Bytes Board of Directors	2
President's Message Cantor's Message Choir	3
Havurah Rabbi's Thank You Photos - Open House	4
Women of CBE, July event Photos - Sisterhood Shabbat	5
Meet our CBE Family July Shabbat Under the Stars Photo - SV Street Fair	6
Oneg Sponsors Macy's Fundraiser	7
Recent Donations August Shabbat Under the Stars	8
Photos - HUC Ceremony Choir Party	9
Birthdays, Anniversaries Membership Open House	10
Photos - Religious School Graduation/Staff Appreciation Shabbat to the Sea/Hike Visit to Holocaust Museum Confirmation	11
Yahrzeits, Condolences	12
Advertising	13-14
Ad - Israel Bonds	15
Schedule of Services, Candlelightings, and Torah Portions	16

President's Message



Six years ago, Shelly Botan, VP of Membership replied to my email when I asked "why should my family join CBE?" With a new membership year here, I thought it would be a nice opportunity to share Shelly's response (I assure you, this is only an excerpt).

If you are looking for a temple that welcomes interfaith families, then we are the temple for you. If you are looking for a temple where we want to share in your growth as a Jew, celebrate your happy times, and be a comfort to you in your sorrows, then we are the temple for you. If you are looking for a temple population which is not huge, but comfortable, and affords the opportunity to be an integral part of temple life, then we are the temple for you. If you are looking for a positive religious school and/or pre-school experience for your children, then we are the temple for you. If you are interested in a temple that offers a full spectrum of avenues to be socially active within a Jewish context (Sisterhood, Men's Club, Choir, Havurah, etc.), then we are the temple for you.

The thoughtfulness of her response is what brought us out for our first service at CBE; however, it was the welcoming nature of this congregation and its laid back--come as you are--attitude that brought us back. Shelly was correct, CBE is **the** temple for me and my family. We have formed genuine friendships that live beyond weekly Shabbat services. I believe our membership is our biggest strength. While we are not large in numbers, we foster a warm, inclusive, and fun environment that provides all of the needs Shelly identified.

As we approach the new membership year, the board and I are optimistic for the future and hope to expand our Temple family. In order to do this, we must rely on our greatest asset, our members. We need to continue to be welcoming, we need to continue to be caring, we need to continue to have fun, and we need to let our friends and community know how great we are!

Shalom,

Ryan Richmond

CONTAGIOUS Cantor Michel Russ July August 2016



Hate is destructive and contagious.

Love is constructive and also contagious.

When we listen, let us understand the difference.

When we speak, let us understand the difference.

What kind of world do we want to live in?

TOP 10 REASONS FOR JOINING THE CHOIR

1. You enjoy singing and want to form attachments with others who enjoy singing.
2. You want to learn more about music.
3. You want to learn more about prayer.
4. You want to learn more about Hebrew. (Reading Hebrew not required. Everything is transliterated into English.)
5. Want to participate more in the service and get good seats.
6. You need an outlet for expressing yourself.
7. You need an occasional night away from the daily grind.
8. You don't have a budget for therapy. (Remember, music "soothes the savage soul.")
9. You're ready to try your singing outside the shower and the car.
10. You've thought about it a million times.

Contact Irwin Cohen at 526-8432, or
[mailto: IrwinLCO@aol.com](mailto:IrwinLCO@aol.com)

Havurah

Are you interested in expanding your relationship with other temple members? Joining a havurah might be the perfect answer. A havurah (or friendship group) is made up of temple members with similar interests.

There are currently four active havurot at the temple. The one I am most familiar with is known as The Bullfrogs and has been together for many years. (My husband and I are part of this group). We are eight families, and we try to get together on the first Friday of every month for Shabbat dinner. A different family hosts it each month. We also break the Yom Kippur fast together annually. We attend events such as jazz concerts, support temple functions, celebrate New Year's Eve, and take weekend trips to places like Las Vegas, Laughlin, and Temecula (wine stomping included). Sharing milestones such as b'nai mitzvah, anniversaries, weddings, births, and funerals makes us feel like family.

The other havurot do not have names. We'll have to work on that!

Havurah #2 is made up of 20 people, and they have had barbecues, as well as outings such as theater, dinner, jazz and more.

Havurah #3 has 12 members. Each couple takes a different month to plan the activity. They go to movies, dinner, and plays.

Havurah #4 is made up of three families with children (12 participating). They have done concerts in the park, dinners at houses, adults only dinners, Halloween parties, birthday parties, limousine parties (adults only, it started as dinner, but ended with drinks at a gay bar), break the fast dinners, sporting events and movies.

If you would like to be in a havurah, please let me know and I will try to make up a group with similar likes and interests. Your havurah might even become your extended family. If you are interested contact RuthAnn Rossman at rupee24601@gmail.com or leave a message on the temple phone, [805.581.3723](tel:805.581.3723). Hope to hear from each and every one of you.

Havurah is a benefit accorded only to Congregation B'nai Emet members.

RuthAnn Rossman

VP Havurah

From Rabbi Michele

THANK YOU – תודה רבה – GRACIAS!

Thank you for your kind wishes and generous donations in honor of the 25th anniversary of my ordination and Doctor of Divinity degree.

Thank you to each of you who attended the celebration at the Rossmans and for your friendship through the years. If you'd like to see the special song that Irwin Cohen wrote for the occasion, check out:

<https://www.youtube.com/watch?v=2RqcjwoBhFg&list=PL0pXBE4XswDWJwOO6fdyZAJOT9hpPoOGp&index=1>



Photos from the Open House Reception

Women of CBE

Our May meeting was well attended as we listened to a CERT speaker from the SVFD discuss emergency preparedness..

Sisterhood Shabbat was May 20. We presented checks to the temple: \$3600 for Building Fund, \$2000 for General Fund. Much of this money came from gift card sales. We appreciate your support.

Our gift shop donated a basket of Jewish items to be presented to the 100th member family of CBE.

We provided desserts for the Shabbat in 3-D event on June 4.

Our calendar for the year is available on the website's sisterhood page:

<http://congregationbnaimet.org/2016-17.%20sisterhood.Event.Calendar.pdf>

At our June Board meeting we planned our budget for the fiscal year and revised our membership materials, which will be mailed out in July.

In June we enjoyed "Schmooze & Schmear" a "get acquainted" meeting with dairy foods for Shavuot at the home of Suzanne Epstein. Our July general meeting will be a movie & dinner night at the Regal Center (see flyer below).

In August we are planning a joint Open House with CBE membership on Sunday, Aug. 21, to publicize CBE and affiliates.

We made donations to the LA Museum of the Holocaust, where several students and parents attended the Holocaust Memorial on May 1, and to the Disabled Israeli Soldiers Fund, after a temple guest speaker talked about his experiences as an Army doctor.

We will be attending Southern California Area Day in Santa Ana on July 10, and helping with preparation and other tasks.

We are preparing to start our campaign to sell Mahzorim again this year.

Remember, everyone can support sisterhood by buying gift cards and tribute cards, sponsoring onegs, buying tribute cards, and shopping in our House of Judaica Gift Shop.

We are all stronger together. Keep cool this summer!

In sisterhood,

Meridith Patera, President, Women of CBE



Sisterhood Shabbat - May 20

THE WOMEN OF CBE

invite you to our next general meeting:

**LADIES' NIGHT OUT:
DINNER & A MOVIE**

**Tuesday, July 12
6 PM**

**Regal Civic Center
118 Fwy @ Tapo Canyon
Simi Valley, CA 93063**

We will meet in the food court
for dinner and then choose a
movie to see. Join us for dinner,
the movie or both!

 **WOMEN OF REFORM JUDAISM
STRONGER TOGETHER**



Meet our CBE Family

In this space we will be helping you get acquainted with CBE members - some new and some who have been around a while. This issue features Choir Director Irwin Cohen and Newsletter Editor Suzanne Epstein



I was born and brought up in New York where I received a wonderful education and a wonderful sense of values from my parents who provided a warm and loving Jewish home, had me attend Hebrew School from the age of 8, piano lessons from the age

of 9, and instilled in me the importance of appropriate behavior as befitting any and all occasions - like wearing nice clothes to shul, concerts, family weddings and White House dinners.

I taught school in New York and Simi Valley for 32 years. I am now retired and enjoy playing tennis, bridge, poker, bowling, attending theater, concerts - and most of these with my friend Minnie (who I am so glad is Jewish).

Our award-winning CBE Choir is another of my delights. They are the nicest group of people one could imagine - and some of them can even sing!

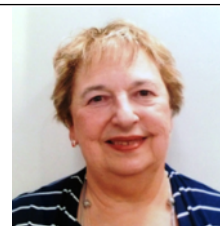
I attend Shabbat Services as often as I can. I find them spiritually uplifting and a constant reminder of who I am.

I give Retirement Lessons - but only by appointment. I am very expensive.

Shalom.

Irwin Cohen

My name is **Suzanne Epstein**. My husband, Ken, and I have been members of CBE for about 15 years. For most of that time I have been the editor of the bi-monthly Chai Lites newsletter. We live in Porter Ranch, have three adult children (Sharon, Stephen and Jody) and two grandsons (Bennett and Jackson).



I was born in Nebraska and raised in Bettendorf, Iowa (one of the Quad Cities along the Mississippi River). Music was a big part of my early years. I started piano lessons at age 6, then took up the flute in the 8th grade. I marched in the band at football games.

I attended Simmons College in Boston, where I played in the orchestra, as well as one year in the MIT concert band. I got married at the end of my junior year, and moved to Los Angeles, where I finished my BA in Psychology at UCLA. After two years in the Air Force (Ken, not me) we settled in the San Fernando Valley where Ken practiced medicine (Family Practice).

When my children were all in school, I went back to CSUN and earned my Masters degree in Counseling. I worked first as a volunteer, then later as a licensed Marriage and Family Therapist. I eventually decided I'd had enough of that, so I quit and took a part-time job doing data entry for an electronics sales company. Eighteen years later, I'm still there.

Ken and I have been married for 52 years. We love the theater, and we love to travel. We have enjoyed visiting many wonderful places, both in the US and abroad. A few highlights would be Israel, Egypt, Kenya, the Galapagos Islands, Argentina, Alaska, and many US National Parks. We have visited Estonia (Ken's parents' birthplace), Germany (my father's) and Poland (my mother's).

If you have met me, I was probably introduced as "Michael Hollander's sister." I love to call Michael "my baby brother," because, indeed, he is quite a bit younger than I am. But I'm proud to call him one of my best friends.



CBE Booth at Simi Valley Street Fair



Oneg Sponsors

April 29, 2016

The Schned Family in loving memory of Esther Schned
Rachel Utiger in memory of Trudy Gorelick
Michele Stevens in honor of her birthday
Sylvia Levine in loving memory of Lisa Weissbrod

May 6, 2016

The Schned Family in loving memory of Esther Schned
Suzanne Crawford & Andrew Mahler in honor of their
"aufruf"
The Family of Hannah Bat Chaya V'Avraham - Elle
Agnes Cantor – in honor of her
Hebrew Naming
The Family of Chanan Aryeh Ben Amanda V'Jake - Leo
Murray Warren – in honor of his
Hebrew Naming
The York Family in memory of Arthur Korn
Carol Rosado in honor of her birthday & the birthdays of
Ronnye Sacks & Dara Tolchin

May 13, 2016

The Schned Family in loving memory of Esther Schned
Meridith Patera & Carla Shaw in memory of Kate Shaw
Mel & Louise Edelson in memory of Morris Silversher
Sharlene Pass in memory of Phyllis Pass
Lois Friedman in honor of Mother's Day
Suzanne Epstein in memory of Werner Hollander
Craig & Michelle Foster in memory of Michael Kelson
Holly & Steve York in memory of Sara Saffrin
Lynne & Barry Selbst in honor of tomorrow's bar
mitzvah of grandson Russell Thomas
Alan & Linda Mann in memory of his sister Miriam
Mann, Aunt Angela Mann, & Uncle Martin Michel
Ken & Frieda Bahr in memory of Ken's grandparents,
Al & Ida Pollack, Holocaust Survivors

May 20, 2016

The Schned Family in loving memory of Esther Schned
Meridith Patera in honor of the women of CBE & all the
May birthdays, & Lillian Knecht's graduation
Holly & Steve York in memory of Jesse Price Orellana &
in honor of Jennifer's graduation from
Pepperdine University & earning her
Masters in Clinical Psychology
RuthAnn Rossman in honor of her sisters of CBE, in
honor of all the sisters with birthdays in May, in
honor of Steve & Zach Rossman's birthdays, & in
memory of Pearl Bloch, who would have been 100
tomorrow.
Lynne & Barry Selbst in honor of the bar mitzvah
tomorrow of grandson Matthew Thomas
Debra & Daniel Schranze in memory of Debbie's parents
Beverly & Robert Friedman

May 27, 2016

Maxine Seidel in memory of Rita Seidel
Lynne Selbst in memory of her grandmother Fannie
Theodore

June 3, 2016

Meridith Patera in honor of the staff, students, &
graduates of CBE Religious School

June 10, 2016

Meridith Patera in honor of confirmands Rachael,
Jordan, & Jeremy
Ken & Suzanne Epstein in honor of their 52nd anniversary
Kathy Smith in memory of Leroy Ackerman
Lynne Selbst in memory of her grandmother Fannie
Theodore
Judy, Eliot & Matthew Epstein in memory of Judy's
father, Kurt Fleischmann
Ronnye Sacks in memory of Fred Sacks

June 17, 2016

Sylvia Levine in honor of her granddaughter Melissa's
21st birthday
Rachel Utiger in memory of her grandparents Percy John
Frank & Sadie Miller Frank

June 24, 2016

Judy, Eliot & Matthew Epstein in memory of Judy's
grandfather Julius Fleischmann

MACY'S FUNDRAISER

An exciting, easy way to raise funds for
the Sisterhood and Temple!

August 26-28 - Ticket price is \$5.
Valid at any U.S. Macy's Store

ALL PROCEEDS GO TO US!



There will be Pre-shopping Days that will start
on August 16 for those who can't make it on
August 26-28. You can choose your items, which
will be put aside for you. You can pay for them
and pick them up any time after August 28 and
still get your fabulous discounts!!!

>>The Shop For A Cause offer is a weekend shopping pass discount
of 25% throughout the store on an assortment of regular, sale and
clearance merchandise and 10% on electrics/electronics, watches,
furniture, mattresses and rugs/floor coverings.

>>Savings passes are valid at all Macy's stores only on the event
days. However they are not valid on macys.com.

>>Plus, at each Macy's store,
customers who bring in their
savings pass will be eligible to win
a \$500 gift card, no purchase
necessary.

* Exclusions and restrictions apply.
See shopping pass for details

DOUBLE THE MITZVAH:
Order Macy's gift cards
from the Sisterhood! We
have Macy's cards in \$25
and \$100 denominations.

For more information, contact Alice Fiducia at jafiducia@roadrunner.com
To order gift cards, contact Bobbie Sion at sionfam@gmail.com or leave
her a message at the temple: (805) 581-3723.

Recent Donations

Building Fund

Sheldon and Joan Liebman – in memory of Joyce
Alexman and Leon Brody
Bella Hananel – in memory of Miriam Stein
Neal and Susan Epstein – in memory of Trevor
Grant Scharf
Steve and Ruth Ann Rossman – in memory of
James and Marlene Bloch

Rabbi's Discretionary Fund

Cookie and Arnie Uretsky – in appreciation of Rabbi
Michele; in memory of Harry Uretsky
Ken and Suzanne Epstein – in honor of Rabbi Michele's
Doctorate and the 25th Anniversary of her ordination
Amanda Bruck - in honor of the 25th Anniversary of
Rabbi Michele's ordination
Andrew Cantor and Jessica Valdez - in honor of the 25th
Anniversary of Rabbi Michele's ordination
Nate and Margaret Nusbaum - in honor of the 25th
Anniversary of Rabbi Michele's ordination
Maxine Seidel and Thomas Sumner - in honor of the
25th Anniversary of Rabbi Michele's ordination
Dan and Geri Brandler – in honor of Rabbi Michele's
Doctorate
Steve and Lois Friedman – in honor of Rabbi Michele's
Doctorate
Les and Daryl Sutton – in honor of (Aunt) Audrey
Goldstein's 90th Birthday
Emily and Kristopher Doepping – in appreciation of
Rabbi Michele
Caryn Bower and Andrew Neidhardt - in honor of the
25th Anniversary of Rabbi Michele's ordination
Ivy Ann Giles - in honor of the 25th Anniversary of Rabbi
Michele's ordination
David and Cheryl Hirsch - in honor of the 25th
Anniversary of Rabbi Michele's ordination

Memorial Donations

Marianne Susman – in memory of Leslie Goldhammer
Mitchell and Lynn Salberg – in memory of Burton Borrok
David Glazer – in memory of Dorothy Glazer
Alexander and Cima Goldenberg – in memory of Fanya
Bronfermachev
Jeanne Waksman – in memory of Marvin Waksman
Judith Miller – in memory of Cynthia Miller
Marian Nadich – in memory of Paul Nadich and Fanya
Bronfermachev

Religious School Fund

Game and Jill Katell - in honor of the 25th Anniversary of
Rabbi Michele's Ordination
Michelle Scharf – in memory of Trevor Grant Scharf
Sheldon and Joan Liebmann – in memory of Bertha
Liebmann; in appreciation of Mi Shebeirach
Prayer for their son

Building Improvement Fund

Michael and Marilyn Hollander - in honor of the 25th
Anniversary of Rabbi Michele's ordination
Michael and Merle Russ – in memory of Oscar Keimon
and Herman Russ
Women of CBE
Steve and Lois Friedman – in memory of Penny
Neugroschl

Tribute Fund

Steve and Ruth Ann Rossman – in honor of Sandy
Miller's 75th Birthday

Feed the Needy Fund

Ken and Suzanne Epstein – in memory of Penny
Neugroschl

Preschool and Education Building Fund

Sheldon and Joan Liebmann – in memory of Gail Lenore
Shapiro

Fund Raising Donations

Michael Mutal and Julie Bienenfeld – Gift Card Prizes

General Donations

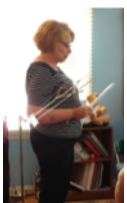
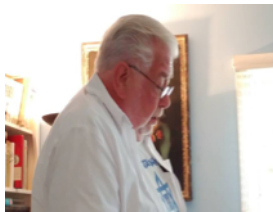
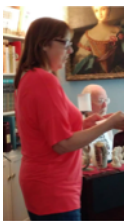
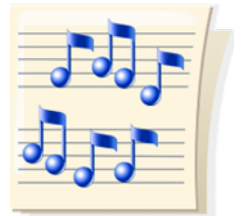
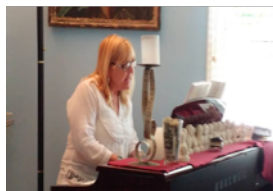
Women of CBE
Suzanne Mortimer-Crawford
Bob and Barbara Poehls
Keith and Lynne Kelly – Charitable Car Donation



Rabbi's Honorary Doctorate - 25th Anniversary of her Ordination



Annual Choir Party



Birthdays

July 3	Jody Epstein
July 4	Alyssa Enright
July 4	Debra Schranze
July 8	Judith E. Sternberg
July 9	Jeffrey Plotkin
July 9	Bob Poehls
July 10	Erica Weiner
July 12	Jacob Inbar
July 12	Lynne Selbst
July 15	Mel Edelson
July 15	Amy Field
July 17	Jonathan Cohen
July 18	Joan Liebmann
July 21	Steven York
July 22	Scott Ranelletti
July 25	Shai Levy
July 27	Brandon Enright
July 27	David Nusbaum
July 28	Erik Breiter
July 29	Samuel Patera
July 30	Michelle Foster
July 30	Jeff Melnick
July 31	Joshua Bordo
August 1	Mark Mutal
August 5	Regina Brandler
August 6	Louise Edelson
August 7	Andrew Hollander
August 7	Ryan Richmond
August 9	Matthew Epstein
August 9	Lynne Kelly
August 9	Eliana Plotkin
August 9	Valerie Singh
August 11	Mark Brandler
August 11	Jessica Breiter
August 11	Connor Hules
August 11	Danny Jordan
August 13	Max Patera
August 15	Wendei Spale
August 17	Jack Apelbaum
August 18	Al Levy
August 19	Gabriel H. Rossman
August 21	Melissa Bergmann
August 21	Jill Katell
August 22	Louis Tepfer
August 23	Blake Bosworth
August 26	Frieda Bahr
August 27	Megan Smith
August 29	Allen Luskin
August 30	Bennett Patera

Let's Celebrate



Anniversaries

July 17	Bob and Barbara Poehls	33rd
July 26	Stephen and Frida Friend	36th
August 1	Jerry and Jan Auerbach	34th
August 3	Sheldon and Joann Liebmann	64th
August 8	John and Cindy Elhai	23rd
August 12	Herschel and Laura Berger	27th
August 12	Stan and Sandy Melnick	54th
August 13	Stephanie and Jeremy Hules	10th
August 23	Michael and Amy Mittelman	1st
August 24	Steven and Holly York	31st
August 25	Julie and Scott Ranelletti	14th
August 26	Jeffrey and Tamara Plotkin	37th

Be Our Guest!

Meet & Mingle

Open House



Barbecue!

Fun Music!

Kids' Activities!

Learn about our Temple,

Religious School, Preschool,

Sisterhood & Men's Club!

Come schmooze with members of our temple family.

Bring the kids and grandkids for a fun afternoon!

Sunday, August 21

3-6 PM

Congregation

B'nai Emet

9 W. Bonita Drive

Simi Valley

(805) 581-3723



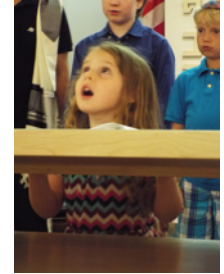
From Generation to

Generation...

... Making your

family a part of ours.

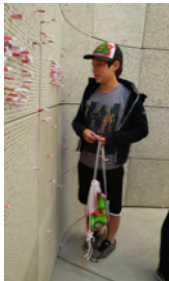
Religious School Graduation & Staff Appreciation Shabbat



CBE Shabbat at the Sea - With Optional 8.5 Mile Hike



Visit to LA Museum of the Holocaust - May 1, 2016



Confirmation - June 10, 2016

Confirmands Jordan Levine & Rachael Rosenstein - Judaica High student Jeremy Levine



Yahrzeits

July 1	Manuel Lieber	Sivan 25
July 2	Rose Firestein	Sivan 26
July 2	Max LeVine	Sivan 26
July 2	Morris Pass	Sivan 26
July 2	Ronnie Tabak	Sivan 26
July 2	Benny Zaltzman	Sivan 26
July 4	George Lazarus	Sivan 28
July 4	Sheldon Raab	Sivan 28
July 7	Milton Grossman	Tammuz 1
July 7	Marion Pfefer	Tammuz 1
July 8	Leon Brody	Tammuz 2
July 10	Gustav Heimann	Tammuz 4
July 10	Theodore Karoff	Tammuz 4
July 10	Claire Klugman	Tammuz 4
July 10	Abe Richter	Tammuz 4
July 11	Gladys Rosenberg	Tammuz 5
July 11	Alan Tolchin	Tammuz 5
July 12	Joe Orloff	Tammuz 6
July 13	Shirley Borrok	Tammuz 7
July 13	Leatrice Goldstein	Tammuz 7
July 14	Irwin Katz	Tammuz 8
July 14	Jack Shultz	Tammuz 8
July 15	Frank Mutal	Tammuz 9
July 16	Charnette Shilling	Tammuz 10
July 17	Lee Lieber	Tammuz 11
July 18	Lawrence Chusid	Tammuz 12
July 18	Ruetta Orloff	Tammuz 12
July 19	Florence Cricco	Tammuz 13
July 22	Steven Borrok	Tammuz 16
July 22	Mary DeSatnick Greenberg	Tammuz 16
July 23	Harry Gould	Tammuz 17
July 24	Vera Glazer	Tammuz 18
July 25	Karl Menke	Tammuz 19
July 25	Irys Schneider	Tammuz 19
July 28	James Steffens	Tammuz 22
July 29	Lillian Smith	Tammuz 23
July 30	Irene Goldbloom	Tammuz 24
July 30	John Levin	Tammuz 24

July 31	Debbie Alderton	Tammuz 25
July 31	Bessie Keimon	Tammuz 25
August 1	Edwin Kaufman	Tammuz 26
August 1	Florence Neugroschl	
August 1	Cecilia Schwartz	Tammuz 26
August 2	Harry Goldberg	Tammuz 27
August 2	Marcia Rifkin	
August 3	Earl Rosado	Tammuz 28
August 4	Debby Odens	Tammuz 29
August 5	Frieda Davis	Av 1
August 9	Shary Farkas	Av 5
August 10	Ruth C. Frolove	Av 6
August 11	Ruth Dacks	Av 7
August 11	Irwin Foster	
August 11	Harold Mann	Av 7
August 12	Medill Bienenfeld	Av 8
August 12	Carl Oliver	Av 8
August 12	Abraham Pichkhadze	Av 8
August 12	Herman Scharf	
August 13	Melvin Bernstein	Av 9
August 13	Ruth Sacks	Av 9
August 14	Walter Brandler	Av 10
August 15	Art Schultz	
August 17	Norman Wohlner	Av 13
August 22	Jack Apelbaum	Av 18
August 23	Phyllis Landau	Av 19
August 23	Irving Pfefer	Av 19
August 23	Daniel Scop	Av 19
August 24	Donald Marx	Av 20
August 25	Abraham Jacob Frank	Av 21
August 28	Laura Bloch	Av 24
August 28	Murry Fromer	Av 24
August 28	Winfred Jackman	
August 28	Dianne Marks	Av 24
August 30	Estelle Breiter	Av 26
August 30	Lou Gotenstein	Av 26
August 31	Ann Hirschorn	Av 27

Please check the current Yahrzeit information on the data sheet you received in your membership packet. Verify its accuracy and call the office with any changes or new Yahrzeit information.

During the year, you will receive reminders for upcoming Yahrzeit dates. We want to have complete and accurate information.

Call the temple office with any questions regarding Yahrzeit data.

Thank you.



How to observe a Yahrzeit at CBE

Light a 24-hour memorial candle in your home at sundown on the evening that begins the yahrzeit (anniversary of death.). It is also customary to attend Shabbat services at Temple and recite the Kaddish.

At Congregation B'nai Emet, names of your loved ones are read on the Friday evening before the Yahrzeit. If you observe the Gregorian (English) date, the name will be read following the yahrzeit date. It is suggested that you make a contribution to the Temple so that the memory of your loved one can be honored with an act of love and kindness.

Condolences to:

The Mittelman family on the passing of Gail's mother, Alice Gottlieb, grandmother of Mike and Amy, and great grandmother of Jojo.

The Sherden Family on the passing of their mother and grandmother, Penny Neugroschl.

Judy Miller on the tragic passing of her grandson, David Miller.

May their life be a blessing and an inspiration.

NEED A CARD? MAKE IT A DONATION !

Send a thoughtful greeting for sympathy, birthdays, congratulations, or just to reach out to someone



Cards from the Women for Reform Judaism's YES Fund go to support projects for Youth, Education and Special Projects here and in Israel, such as rabbinic training and Israeli preschools for needy children.

Each card is hand written and mailed for you; all you have to do is contact us with the information and send a check made out to Women of CBE.

Prices start at \$3.00 for a plain card and \$6.00 for a colored picture card.

Other items are available. To purchase a card, contact Lynne Kelly at lkelmo@aol.com

GIFT CARDS

GIVE THE GIFT THAT GIVES BACK!!!

To purchase gift cards, contact Gift Card Chair Bobbie Sion at sionfam@gmail.com or leave a message at the temple: (805) 581-3723

Go to <http://www.congregationbnaiemet.org/sisterhood.php>

For a printable gift card order form listing all the many cards you can order.

You can also order a personalized certificate so that your recipients can choose their own cards.

B'nai mitzvah students:

Register for the gift cards you want!!!

Digital Wide & Small Format, Printing, Copying

Copy Center, Too!

Tim R. Anderson
Manager

P. O. Box 931
Newbury Park, CA 91319-0931

"Your Printing, Design, and
Photocopying Specialist"

Phone: 805-914-8271
e-mail: tim@copycentertoo.com

New Directions Event Planning, Inc.

**B'nai Mitzvahs • Weddings • Anniversaries • Birthdays
Theme Parties • Corporate Events • Picnics
Grand Openings • Holiday Celebrations**

- Theme Decor
- Photography
- Videography
- Floral Design
- Entertainment
- Props / Rentals
- Dance Giveaways



- Catering
- Balloons
- Locations
- Invitations
- Bands/DJ's
- Party Favors
- Transportation

*Twenty two
Years of
Successful Events*

*Voted #1 in
Ventura County*

We will produce the entire event or coordinate any part of it!

(805) 581-2602

www.newdirectionsevents.com

Imagine Your Ad Here

Business Card size

\$100.00 per year

\$45.00 for 1 issue

1/4 page ad

\$165.00 per year

\$65.00 for 1 issue

1/2 page ad

\$265.00 per year

\$95.00 for 1 issue

Full page flyer

\$420.00 per year

\$130.00 for 1 issue

**Call Temple office For more
information**

GIVE THE GIFT THAT GIVES BACK!



3 Easy Ways to Earn for Our Group

1. Sign Up/Add Cards
2. eScrip Online Mall
3. eScrip Dining by Rewards Network

[Click to learn how!](#)

Support the temple by purchasing gift cards for many local and national businesses and restaurants

Click here for more info: <http://congregationbnaiemet.org/sisterhood.php>

Cell: 805.501.8071
Office: 805.584.3683
Fax: 805.620.3740



JO ANN POOLE
Poole Your Efforts!
Broker Associate
CalBRE 01058326

E-Mail: JoAnn@JoAnnPoole.com
Web: www.JoAnnPoole.com

SIMI'S HOUSE OF JUDAICA

Located
at CBE



For all your
Judaica
Needs!

Call (805)
581-3723 for more
information, hours
of operation &
holiday boutiques.

Holiday Items
Shabbat Needs
Bar/Bat Mitzvah Registry
Huge Selection of Jewelry
Kipot & Tallises
Gifts for All Occasions
Mah Jongg Goodies
Greeting cards
Personalized kippot &
Invitations by special order



YOUR FAMILY IS
PRECIOUS
TO YOU

Plan ahead with a gift of love for
those you care about most.

Congregation Bnai Emet Advance Planning Representatives

Eric Frank
805-306-6410
efrank@mountsinaiparks.org

Josh T. Ryan
805-306-6411
jtryan@mountsinaiparks.org



Simi Valley FD 1745 6150 Mount Sinai Drive, Simi Valley CA 93063
Hollywood Hills FD 1010 5950 Forest Lawn Drive Los Angeles CA 90068
www.mountsinaiparks.org 800-600-0076
Dedicated to the entire Jewish community as a service of Sinai Temple of Los Angeles.



Realtor
BRE Lic# 01933019

Maxine Seidel

c: 818.516.2182
f: 805.624.7521
maxineseid@aol.com

Let's Make It Happen!



Keller Williams Exclusive Properties

Keller Williams Exclusive Properties
2655 First Street, Suite 150
Simi Valley, CA 93065
Each Office Independently Owned and Operated

Michael's Flowers

Sending Smiles Everywhere

805.527.9104
800.554.9083

1951 Sequoia Ave.
Simi Valley, CA 93063
www.michaelsflower.com
Open 7 Days





Give Gifts of ISRAEL BONDS For **All** Celebratory Occasions

Mazel Tov bonds

STARTING AT

\$100

eMitzvah bonds*

STARTING AT

\$36

INVEST IN ISRAEL BONDS · [ISRAELBONDS.COM](https://israelbonds.com)



Development Corporation for Israel/Israel Bonds
1950 Sawtelle Blvd., Suite 370 · Los Angeles, CA 90025
losangeles@israelbonds.com · 800.922.6637

*Available only online. This is not an offering, which can be made only by prospectus. Read the prospectus carefully before investing to fully evaluate the risks associated with investing in Israel bonds. Issues subject to availability. Member FINRA. Photos: Aleksandr Kutsayev, Corbis, Comstock, istockphoto.com

Schedule of Services, Candle lightings, and Torah Portions

Date	Candle Lighting	Service	Torah Portion
July 1/26 Sivan	7:53 PM	Family Service 7 PM	Sh'lach Lecha - Numbers 13:1 - 15:41
July 8/3 Tammuz	7:51 PM	Shabbat Service 8 PM	Korach - Numbers 16:1 - 18:32
July 15/10 Tammuz	7:49 PM	Shabbat Service 8 PM	Chukat - Numbers 19:1 - 22:1
July 22/17 Tammuz	7:45 PM	Shabbat Under the Stars Dinner 6:30, Service 7:30	Balak - Numbers 22:2 - 25:9
July 29/24 Tammuz	7:40 PM	Shabbat Service 8 PM	Pinchas - Numbers 25:10 - 30:1
Aug 5/2 Av	7:33 PM	Family Service 7 PM	Matot-Masei - Numbers 30:2-36:13
Aug 12/9 Av	7:26 PM	Shabbat Service 8 PM	Devarim - Deuteronomy 1:1 - 3:22
Aug 19/16 AV	7:18 PM	Shabbat Service 8 PM	Vaetchanan - Deuteronomy 3:23 - 7:11
Aug 26/23 AV	7:09 PM	Shabbat Under the Stars Dinner 6:30, Service 7:30	Eikev - Deuteronomy 7:12 - 11:25

GO TO OUR WEBSITE: CONGREGATIONBNAIEMET.ORG

OR VISIT OUR FACEBOOK PAGE TO GET MORE DETAILS ON ANY OF OUR ACTIVITIES AND WAYS TO SUPPORT OUR TEMPLE
CONTACT MERIDITH TO RECEIVE WEEKLY EMAIL UPDATES. mspatera@earthlink.net



Congregation B'nai Emet
P.O. Box 878
Simi Valley, CA 93062-0878

DATED MATERIAL

—Please do not delay delivery—