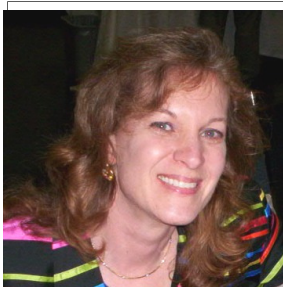


# C.B.E. CHAI LITES

Volume 31, Issue 5

July-August 2010/Tammuz-Av-Elul 5770

## Rabbi's Message



Dear Friends:

Jewish society is built upon two main units, the family and the community. In a similar way, we can “do Jewish” in our daily lives, and also get involved with the Temple to “do and be Jewish” with our extended family in so many rewarding ways. When you become active at the Temple, attend services and social events regularly, the people you are with become your additional friends and family. CBE is a warm and enriching family and community – I hope you will become more active and involved in the many programs, projects and activities available.

Membership in the Temple gives respect to the Jewish people and enables us to strengthen our involvement with our people and our community. We live in a society of many different political and social organizations, mainline churches and numerous religious groups. Certainly we Jews ought to be able to support a synagogue, a Jewish school and other vital Jewish institutions. I express my admiration and gratitude to each of you for being affiliated and for supporting our Congregation, B’nai Emet. Having our own facility gives us dignity and enhances our status in the community. We can all take pride in our congregation.

Unfortunately, a large number of Jewish people remain unaffiliated and are not involved with the congregation. We all have friends and relatives who do not belong. I would like to suggest that you invite them to come and join us. At some time or other, everybody calls the Temple or the Rabbi for some service and they expect to get it. Some large Temples have a policy that the staff only serve Temple members. I do not agree with that policy, but I understand it. Every Jewish person should belong to the Temple to show their support for the Jewish community and know that the Temple is there to be of service.

Our Jewish tradition teaches us that we are part of a family, the House of Israel. We are taught to help one another and assist each other. In our day, when so many people call the Temple for guidance, for help, for a family event, everyone should belong to a synagogue and be counted as part of the family.

We will have services and activities throughout the summer. If there is a project that you would like to have that presently does not exist, come and help us establish it. Join us and get involved – bring your friends! You will be filled with contentment, make wonderful friends, and have a sense of a meaningful life.

Our Vice-President for membership, Shelly Botan, is very gracious, and will be happy to welcome you and accommodate you in every way.

*Lehitraot.* See you in Shul!

*Rabbi Michele Paskow*



☆☆☆☆☆☆☆☆☆☆☆☆☆☆☆☆☆☆☆☆☆☆☆☆☆☆☆☆☆☆  
☆☆ Special Shabbat programs: ☆☆  
☆☆ SHABBAT UNDER THE STARS ☆☆  
☆☆ Fridays July 16<sup>th</sup> and August 20<sup>th</sup> ☆☆  
☆☆ 7 pm hors d’oeuvres ☆☆  
☆☆ 8 pm service on our patio. ☆☆  
☆☆☆☆☆☆☆☆☆☆☆☆☆☆☆☆☆☆☆☆☆☆☆☆☆☆☆☆☆☆

## President's Message by Michael Hollander

Hello, fellow Temple members. I truly hope your summer is going well and you can find some time to enjoy it. Since I've been underemployed for some time now, I've almost forgotten what it's like to take a vacation, but I'm hoping that memory will be revived soon. Meanwhile, there are still plenty of activities at the Temple to keep us occupied throughout the summer months, and then we're into fall and the High Holidays.

If all parties stay on track, this year will bring a big event to Congregation B'nai Emet's history - the closing of our escrow which will make us "homeowners" of the property on Bonita Drive. As of this article, the escrow is scheduled to close in December. For this success to continue into the future, we must remain dedicated to the synagogue, remember what it means to each of us and keep our membership strong. I urge each of you to maintain your membership and invite other Jewish or mixed Jewish families to join our family. Membership VP, Shelly Botan, is working very hard to develop some unique discounts and membership programs. Please read her article in this newsletter to learn of two upcoming Open Houses; then invite your friends. It's a great time to show off our property, Sanctuary and the CBE preschool on Kadota Street.

Congratulations, again, to our new Board of Directors. They are ready and eager to work hard so that CBE continues to shine. The Board members will also be looking to you for volunteers and perhaps, to serve on a committee. Please share some time with us. We are still shy one Board member. We are looking for a dedicated volunteer to serve as Vice President Social Action. This is a wonderful, rewarding position which helps put our temple out in the community doing volunteer projects or just joining in established fund raising events. Find a partner, if you wish, but please join our board in this position. We need you.

I also want to thank Sisterhood and Men's Club for always stepping forward to help out with events. Much of our Temple's success is due to these groups' support and participation. Keep up the great work.

Welcome home and see you in synagogue.

*Michael Hollander*

President

**The minutes of CBE Board meetings are available to all members in the Temple office.**

## In This Issue

Page	Content
1	Rabbi's Message, Shabbat Under the Stars
2	President's Message, CBE Board
3	B'nai Mitzvah, Fundraising, Men's Club
4	Jewish Life Center, Executive VP, Photos (Choir party, Judaica High)
5	Membership, Photos (June 4 Service)
6	Women of CBE
7	Sisterhood Simchas, Photos (Shabbat Under the Stars)
8	Oneg Sponsors, Recent Donations, Opportunities
9	Women of CBE Event Flyers
10	Photos (Religious School, Pet Parade)
11	Birthdays, Anniversaries, Skirball
12	Yahrzeits, Tisha B'Av
13	Honey Fundraiser
14-15	Advertising
16	Schedule of Services, Candle Lighting Times & Torah Portions

## Board of Directors and Affiliates

Rabbi	Michele Paskow
Cantor	Michael Russ
President	Michael Hollander
Executive Vice President	Mitchell Salberg
VP/Membership	Shelly Botan
VP/Fundraising	Jerry Auerbach
VP/Programs	Jennifer Rosenstein
VP/Havurah	Nirit Levy
VP/Religious School	Deborah Bass
Social Action	OPEN
Secretary	Debbie Knecht
Treasurer	Stanley Melnick
Financial Officer	Eric Bordo
Past President	Earl Rosado
Preschool	Lindy Schneider
Sisterhood	Geri Brandler
Men's Club	Michael Mutal
Temple Adm. Asst	Marilyn Hollander
Preschool Director	Lindy Schneider
Preschool Office Mgr.	Robyn Voigt
Preschool Newsletter	Robyn Voigt
Rel. School Administrator	Meridith Patera
Chai Lites Editor	Suzanne Epstein
Gift Shop	Bobbie Sion
Choir Director	Irwin Cohen
Photography	Max Patera

## B'nai Mitzvah



Hello, my name is **Daniel Klein**. I have recently graduated from Lawrence Middle School Gifted Magnet, in Chatsworth. I am very excited to be attending Santa Susana High School in the fall and starting 9<sup>th</sup> grade. I currently live in Simi Valley with my mom, Julie and my dad, Richard. My extended family also includes my Aunt Alisa who currently lives with us. My hobbies include: swimming, reading, helping animals, and collecting action figures. I am extremely excited to become a Jewish adult, to be able to have my Bar Mitzvah and to be able to continue to study the Torah. I look forward to continuing the Jewish traditions I have learned through studying the torah and through my family. One of the most important traditions I have learned from my Jewish background is the importance of family.

Shalom,

My name is **Eliana Zehava Plotkin**. I am becoming a Bat Mitzvah on August 28<sup>th</sup>. I live with my parents, Jeffrey and Tamara. I have two "Chewish" dogs, Shayna and Leo. They chew a lot; but not as much as my nine Parakeets that I have raised over the last two years. My interests include singing, bicycling, Girl Scouts, swimming, and video games. Although I have only participated in two years of Hebrew School, my parents have been teaching me Jewish traditions since the day I was born and I feel I am ready for my Bat Mitzvah. After this memorable event, I will continue to grow in my Jewish traditions. I hope you will share my Bat Mitzvah with me. Toda Raba!



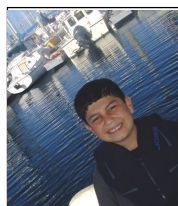
## Fundraising

Get ready for a night of excitement as CBE presents "A Nite at the Races" (in Simi Valley). Mark your calendar now for Saturday, October 2<sup>nd</sup> at 7:30 pm at the Simi Valley Senior Center. You don't need to know anything about horseracing to be part of this Extravaganza. We will tell you exactly how it works at the beginning of the event. You'll be placing bets with "funny money" hoping to win races and take home prizes. Each race will be shown (projected) to make you feel like you are actually there. See the Parade To The Post, the Loading at the Starting Gate, the heart pounding action of the Opening of the Gate and --- They're OFF !!! Now it's the pounding hooves, the jockeying for position, the thrill of the chase as the horses gallop around each turn. As they turn into the final stretch, the crowd is all screaming the name of their favorite horse. Nearing the finish several horses are neck and neck and as they go under the wire -- it's a photo finish. The photo flashes and the winner is announced.

This is a CBE fundraising event, and we hope that everyone will bring family, friends, relatives and business associates. \$25 per person gets you in the gate and covers races (with "funny money"), snacks and drink. And be ready to cheer on your horses for each of eight races.

More information will follow. You can send your ticket request and check to the Temple office or contact me directly (805 813-3727) with any questions.

*Jerry Auerbach*, Vice President Fundraising



Shalom. My name is **Joshua Bordo**. I live in Simi Valley with my parents, Eric and Cherie. I have one older sister, Nicole, who I look up to and love very much. I recently just graduated from Hollow Hills Elementary and will be attending Sinaloa Middle School, in the fall, for seventh grade. I enjoy playing basketball and volleyball. I also love riding my bike and boating. My Bar Mitzvah is important to me because I have been studying Jewish traditions just like my dad and sister. I now understand what my responsibilities are as I am becoming a Jewish adult. To me, being a Jewish adult means knowing how to make better decisions to not only benefit me but others too. It's very important to know who you are and what you would like to be. Through all my years in religious school I have come to the conclusion that I am the only person that can control what my future will be like. My Jewish studies help me in my daily life. For my mitzvah project, I am feeding and helping the homeless. I am very excited to begin my Jewish adult life, so that I can carry on with a similar life style of my family.

## Men's Club

The Men's Club of CBE has just entered its new year. We started off with a fund raiser with a spot at the Simi Valley Street Fair. We sold tri-tip sandwiches. It was co-chaired by Wayne Schultz and Glen Knecht. Many men put in a lot of hours of planning, work, and sweat to make it a success.

Over the summer we will be focusing on some social events, i.e., monthly movie nights, a cigar night in July, and planning a trip to Vegas or Laughlin in the fall. There will probably be other events as members plan them. Our monthly business meetings are usually the second Sunday of the month. If you are not on the men's club email list please contact me at [mmmutal2002@yahoo.com](mailto:mmmutal2002@yahoo.com) and I will add you to the list. We are always looking forward to having new men join us.

*Michael Mutal*, Men's Club President



## Jewish Life Center

The Jewish Life Center has officially started the dissolution process. The vote was taken a few months back and the actual application to the Attorney General was filed recently. The law firm handling the dissolution process is Myers, Widders, and Schneider in Ventura. Roy Schneider has been legal counsel for the JLC for several years. The reason that this legal work is necessary is that the JLC is a 501(c)(3) charitable, non-profit organization. By law, the dissolution and transfer of assets and liabilities of such an organization must have the approval of the Attorney General of California.

There has been a tremendous amount of work done by many individuals in order to make this happen. According to Mr. Schneider, as long as the Attorney General of California has no major questions or objections, the transfer/dissolution will take place sometime mid-August, 2010.

The escrows for the sale of Royal/Corto and purchase of the Bonita property entered another 6 month extension period with a scheduled closing of December, 2010. This extension period virtually mirrors the previous one. We will keep you posted with any major development.

*Michael Mutal*, JLC Chair

## Executive VP's Message

With my first official temple bulletin comments as your new Executive Vice President, I would like to thank everyone for supporting my nomination. This is the second time that I have held a position on the Temple Board. As EVP, my role is to oversee the daily happenings of the temple.

On June 12<sup>th</sup>, a handful of volunteers spent several hours weeding, pruning and mowing the temple grounds. I realized that a top priority of mine will be to set up a Landscape/Maintenance Committee. If anyone is interested in heading or helping out with the committee, please let me know. I am positive we would all like for membership to grow at our temple. As a long term salesperson I know that the first impression is the most important impression. Driving up to the temple and seeing well-manicured grounds is a great impression. Please help out when you have a chance. Also, if anyone would like to donate a plant or plant something on the temple property, please let me know. We all want our temple as a place we can call home. I look forward to an exciting year.

*Mitchell Salberg*, Executive VP

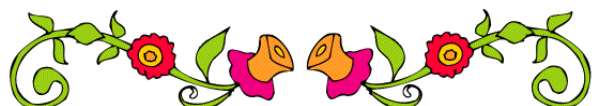
## Judaica High School Service



## End of Year Choir Party



*We met, ate and performed for each other at the home of Julie Bienenfeld Mutal at our traditional end-of-season party on June 13.*





## Membership

As Membership V.P., one of my best jobs is to plan membership/religious school registration events which are focused on inviting current CBE members and past members to recommit to supporting our temple family. After a number of conversations with members of our congregation, we recognize that we also must fervently encourage brand new members to join with us in moving forward. In order to achieve that goal, we will be introducing a “Brand New Member Referral Reward” incentive. More exciting discount/incentive options include:

- “Early Bird” Registration through August 12<sup>th</sup>
- For new member: free first child kindergarten religious school.
- Free one year membership for newly married couples.

Our first membership enrollment event, “Meet & Mingle,” is set for Sunday, July 25<sup>th</sup> from 3 PM to 6 PM. Musical entertainment will be a highlight during the afternoon, and light refreshments will be served. Another membership event is planned for Thursday evening, August 12, from 6 PM to 8 PM. This is our “Early Bird” promotion period, which will be held for a limited time only. What a perfect time to join us as a brand new member, continue your membership from 2009-2010, or return after a number of years.

If you plan to be out of town during the Early Bird promotion, we strongly urge you to make membership arrangements before then.

Don’t hesitate... join with us to enhance the vibrancy of the Jewish communities of Simi Valley, Moorpark, and surrounding areas. Remember, “The best is yet to come.”

*Shelly Botan*, VP Membership

# MEET & MINGLE ON THE TERRACE

**CONGREGATION B'NAI EMET**

  
**9 W. BONITA DRIVE  
(WEST OF MADERA)  
SIMI VALLEY**

**SUNDAY, JULY 25, 2010  
3:00 PM - 6:00 PM**

\*\*\*TOUR OUR BEAUTIFUL TEMPLE\*\*\*

COME SCHMOOZE WITH MEMBERS OF OUR TEMPLE FAMILY

MUSICAL ENTERTAINMENT  
LIGHT REFRESHMENTS WILL BE SERVED.

Don't forget to ask about our  
innovative discount/incentive options

RSVP: SHELLY BOTAN, MEMBERSHIP V.P.  
BNAIEMET@RAIN.ORG - 805 581-3723

## June 4 Shabbat Service



## Women of CBE

Our new sisterhood year is off to a roaring start, with lots of opportunities for fun and fund raising. In May, Carla Shaw taught everyone about container gardening, and everyone had a chance to make a basket or hanging pot of flowers from the large selection Carla brought. Todah rabbah, Carla, for such an entertaining and educational program.

In June, we met at my home, where Nubia Ascher, Lesli Friedman, Tami Plotkin and I talked about our experiences with choosing Judaism. It was a moving and inspirational evening, and we're grateful to the women who shared their fascinating stories.

We started doing "Simchas" again at our meetings. This is when the women present offer wishes of congratulations or happiness to others, make a small donation, and then light candles for their wishes, which we put in a cake. Then we don't have to feel guilty about eating the cake! Look for the list of May and June Simchas in this issue.

On June 23, we had a successful and enjoyable fundraiser at Chico's in Simi Valley Towne Center. While sampling yummy appetizers, we watched a gorgeous fashion show and then took advantage of the sales on clothing and accessories. A portion of all the sales came back to Women of CBE. Thank you to Alice Fiducia for organizing the fundraiser with her usual skill.

We have a lot planned for the summer. First, several of us will attend Women of Reform Judaism's Pacific District All Sisterhoods Day on July 11 at Temple Beth Shalom in Santa Ana. This is a daylong event that provides us with informational and enjoyable workshops on every aspect of Sisterhood, plus great food, of course! We will be welcomed by former CBE member Sandy Gatlin, WRJ Pacific District President, who now lives in Tacoma, WA. The night before, some of us are attending a dinner for Wendy Adamson, WRJ Executive Committee Member, and staying overnight at a hotel. Sure to be an exciting weekend! It's not too late to join us; just contact me for details.

Our July meeting will be a Ladies' Night Out. We'll meet at the food court in Regal Center and then choose a movie or two to see together. This is always a fun evening, and I hope you'll join us.

We'll have a really amusing time at Aunt Cassie Rolle's Tupperware Party at the home of Ruth Ann Rossman. Aunt Cassie (really Curtis) puts on quite a show as s(he) tries to convince us to buy Tupperware and support sisterhood in the process. See the flyer elsewhere in this issue.

In August we have our world famous Simi-4-Maj mah jongg tournament at the temple, which always has the best food of any of the tournaments, according to our attendees, who know good food. We always need extra help and card tables, so if you cannot attend as a player, think about helping us out that day in other ways.

Our Get-to-Know-Us Brunch will be held on Sunday, August 15, at the home of Cheryl Hirsch. If all this activity has whetted your appetite, come learn more about us and meet the wonderful women who do so much for CBE, and have a great time doing it. Check out the flyer in this issue for more info.

***Geri Brandler***

Women of CBE – Stronger together!



**Sisterhood Shabbat—June 11, 2010**

## Sisterhood Simchas May-June

### MAY

Cathy Holst – Thank you, Carla, for your container gardening demo. It was wonderful. Thank you Alice for your help at the Mah Jongg Tournament with the gently used jewelry. Happy Birthday, Geri, Ruth Ann & Meridith

Lynn Salberg – Happy Birthday & Happy Anniversary to Anamae & Len Salberg

Rabbi Michele – Yasher Koach Carla – it was a great gardening party. Mom, it was fun to have you with us at tonight's program!

Geri Brandler – Happy Birthday to me. Congrats to my wonderful granddaughter Lexie going to first grade. Thank you to Carla for the great garden party. Happy Birthday to Meridith, Ruth Ann, and all the May birthdays.

Jill Katell – Happy Birthday & Anniversary to my parents, Anamae & Leonard Salberg.

Ruth Ann Rossman – Happy Anniversary to Judy & Eric; Happy Anniversary to Michael & Nancy; Happy Anniversary to James & Cora, Happy First Anniversary to Kelly & Jonathan. Thank you Carla for a wonderful program on pot planting.

Alice Fiducia – Thanks to Carla – great time & job; Happy Birthday to Geri & Ruth Ann, Thank you to my girlfriends in Sisterhood.

Phyllis Crugnale – Thanks Carla for a very enjoyable program.

Tami Plotkin – Mazel Tov to Eliana for winning 2<sup>nd</sup> prize in the Rotary Club 4 Way Test Essay. Here's to celebrating 37 years since my first date with Jeff (5/26/73). I'm so proud of Eliana and Troop 60430 for earning "Explorer" at Kaleidoscope. Here's to Tami's new kitchen!

Meridith Patera – Happy Birthday to Ruth Ann & Geri; Thank you to Carla for her green (and many other-colored) thumb; Mazel tov to Max for getting his AS at MCC and heading to CSU Channel Islands.

### JUNE

Geri Brandler – Happy Birthday to Dan! I want to thank everyone for coming to the meeting.

Tami Plotkin – I'm thrilled my first blackberries are ripe and my tomatoes are growing! In honor of Jewish spiritual seekers and sharing our stories.

Penny Neugroschl – In honor of Cheryl & David's 35<sup>th</sup> anniversary, and Geri's Birthday.

Alice Fiducia – Thank you, Geri, Lesli, Tami & Nubia. Very interesting!

Kathy Smith – Thank you, Mom, for coming tonight. Have a wonderful trip to Florida. Thank you Geri, Nubia, Tami, and Lesli. Wonderful evening!

Carol Paskow – In honor of Aaron Cohen's graduating from Thousand Oaks High School, JJ riding horses again, Rabbi Shimon's birthday, Carol's birthday, and Rabbi Michele for being a good daughter.

Lynn Salberg – Thank you, Geri, for hosting the Sisterhood meeting in your lovely home. Thank you to all the wonderful women who shared their stories about why they chose to be Jewish. It was a very inspirational evening.

Rabbi Michele – Happy Birthday, Mom!! Yahoo! Yasher koach to our speakers! Mazel tov on Aaron's high school graduation!

Jill Katell – Thanks to Geri for hosting the meeting. Thanks to Geri, Lesli, Nubia & Tami for sharing your stories of conversion.

Shelly Botan – Thanks for the Botan's pooch Buddy's bill of health from the vet, having the opportunity to hear the beautiful and heartwarming conversion stories of Geri, Lesli, Nubia & Tami.

Nubia Ascher – In honor of Daniel Sierra, Jr., for being the first in his family to graduate from high school and go to UC Davis.

Minnie Anzo – In honor of Kathy. Have a wonderful summer at Brant Lake.

Cheryl Hirsch – In honor of my and David's 35<sup>th</sup> wedding anniversary.

Lesli Friedman – In honor of stories of sharing conversions, friendships and my own conversion blessing.

Meridith Patera – Thank you to Geri for hosting the meeting in your lovely home. Thanks to all our speakers for sharing their inspiring and engrossing stories of choosing Judaism. Happy Birthday to Dan Brandler; Thank you to the parents, staff & students for another great year at CBE Religious School; Kol Hakavod to the CBE Choir on another year of magnificent music; Best wishes for a full & speedy recovery to Marty Richter.

## Shabbat Under the Stars





## Oneg Sponsors

April 30, 2010

Cathy Holst in honor of Michelle's birthday

May 7, 2010

Alice Fiducia in honor of her parents' & father-in-law's birthdays

Ronnye Sacks in honor of her birthday

Kathy Smith in honor of her mother Minnie Anzo's birthday

The Tolchin-Boyd Family in honor of Dara's birthday

The Rosado Family in honor of Carol's birthday

May 14, 2010

Irwin Cohen in honor of Minnie Anzo's birthday

The Mutal Family in honor of Aaron & Adam's birthdays

The Picker Family in honor of Carole's birthday

Carla Shaw in honor of the birthdays of Meri, Geri, Ruth Ann & Carole P.

Steve & Holly York in memory of Sara Saffron & Alexa Wiener & in honor of Alicia & Jennifer's 21<sup>st</sup> birthday

The Epstein Family in memory of Kurt Fleischmann

May 21, 2010

Kathy Smith in memory of her father, Leroy Ackerman

The Rossman Family in honor of the birthdays of Pearl, Meridith, Geri, Zach, Ruth Ann & Steve

The Berger Family in honor of Herschel's birthday

Sy & Shelly Botan, with prayers and speedy recovery wishes to Marty Richter, congratulations to Peter Rosenstein on his obtaining a masters degree, & Max Patera upon graduating from Moorpark College

Meridith Patera in honor of Max's receiving his associate in science from Moorpark College

The Rosado Family in memory of Kim Rosado

May 28, 2010

The families of the Judaica High School Class

The Poehls Family in honor of Aaron's birthday

The Hollander Family in honor of Erin's birthright trip to Israel

Minnie Anzo in honor of Lee & Kathy Smith's anniversary

June 4, 2010

The Sherden Family in honor of Steven's bar mitzvah, Jeff & Penny's birthdays & Bob & Lori's anniversary

Penny Neugroschl in honor of Steven's bar mitzvah

The families of the Graduating Class

Meridith Patera in honor of the graduates & staff of CBE Religious School

The Tellio Family in honor of Jeff & Amy's 20<sup>th</sup> anniversary

June 11, 2010

Cathy Holst in honor of Karen Holst's birthday

The Berger Family in honor of Sydney's birthday

Ken & Suzanne Epstein in honor of their 46th anniversary

June 18, 2010

The Brandler Family in honor of Dan's birthday

Rabbi Michele in honor of the birthdays of her parents, Rabbi Shimon & Carol Paskow



## Recent Donations

### Building Fund

Bella Hananel – in memory of Miriam Stein

Mount Sinai Memorial Parks and Mortuary

### Rabbi's Discretionary Fund

Robert and Lori Sherden – in honor of Steven's Bar Mitzvah  
Glen and Debbie Knecht – in honor of Louis's Eagle Court of Honor

Penny Neugroschl – in honor of Rabbi Michele, for Steven's Bar Mitzvah Service

### Religious School Fund

Wolf and Nubia Ascher – Israeli Independence Day

Catherine Holst - Israeli Independence Day

Ronnye Sacks - Israeli Independence Day

Rosalyn Schiff - Israeli Independence Day

Steve and Ruth Ann Rossman - Israeli Independence Day

Shimon and Carol Paskow – in honor of Rabbi Michele Paskow

Robert and Lori Sherden – in honor of Meridith Patera

Penny Neugroschl – in honor of Meridith Patera, for Steven's Bar Mitzvah

Meridith Patera – in honor of the 2010 Religious School graduating class

### Memorial Donations

Joan Bourland – in memory of Ida and Isadore Philip Moses, and Ray B. and Cathy Mae Bourland

Grace Eskenazi – in memory of Mordecai Eskenazi

Anthony and Laura Luskin – in memory of Dina Pichkhadze

Samuel (Ken) Greenberg – in memory of Mary DeSatnick Greenberg and Harry Israel Greenberg

### Prayer Book Donations

Robert and Lori Sherden – in honor of Steven's Bar Mitzvah  
Steve and Ruth Ann Rossman – in memory of Marlene Bloch and James Bloch

### JLC Donations

Teresa Picker – in memory of Curtis Picker

### OPPORTUNITIES for Involvement:

- ATTEND Shabbat services
- ESTABLISH a spiritual and emotional bond with Judaism and the Jewish people.
- ENRICH your knowledge with Rabbi Michele, guest speakers and adult education
- PROMOTE AND SUPPORT Jewish life in Simi and Moorpark through: Sisterhood, Men's Club, Pre/ Religious School, Havurah, Religious and Community Services.



# THE WOMEN OF CBE



invite you to our next general meeting

## LADIES' NIGHT OUT

**Tuesday, July 13**  
**6:00 PM**  
**At the Food Court**  
**Regal Center**  
**Tapo Canyon S. of**  
**Alamo**  
**Simi Valley**

**We'll choose our**  
**food from Bala**  
**Fresh, Daphne's,**  
**etc., and then pick**  
**movies to see. Or**  
**you can just come**  
**for one or the other!**

**RSVP (so that we can save you seats) to:**  
**Meridith - mspatera@earthlink.net**  
**or**  
**Phyllis - 805.526.7105**



# THE WOMEN OF CBE



invite you to our next general meeting

## GET-TO-KNOW-US BRUNCH

Curious about the women and the organization that supports CBE with friendship, fun & fundraising? This is your chance to learn while you eat. What could be bad?

**Sunday, August 15**  
**11 AM**  
**At the home of**  
**Cheryl Hirsch**  
**Simi Valley**



**RSVP to:**  
**Meridith - mspatera@earthlink.net**  
**or**  
**Phyllis - 805.526.7105**

## SIMI 4 MAMA

Mah Jongg Tournament Sponsored by  
the Women of Congregation B'nai Emet



**Sunday, August 8, 2010**  
**at**  
**Congregation B'nai Emet**  
**9 W. Bonita Drive**  
**Simi Valley, CA 93065**  
**(118 fwy, exit Madera, South to**  
**Bonita, right to temple on right)**

### Schedule of Festivities:

**8:30-9:00** sign in / fresh, delicious bagels, muffins, coffee, juice  
**9:00-12:00** session 1 (three rounds)  
**12:00-1:00** Wonderful Spring Salad Lunch Buffet  
**1:00-4:00** session 2 (three rounds) followed by prizes and awards

\*don't forget your 2010 card with your name on it!

For more information, contact Judi Nachenberg (818) 764-6240 or Geri Brandler (805) 529-5295

please return the form below with your check for \$36 payable to:  
the Women of CBE

mail to: Judi Nachenberg  
7037 Park Manor Ave.  
N. Hollywood, CA 91605

Name \_\_\_\_\_  
Address \_\_\_\_\_  
Phone # \_\_\_\_\_  
Email \_\_\_\_\_

**SIMI 4 MAMA**

I will be EAST \_\_\_\_ YES \_\_\_\_ NO I will bring my set \_\_\_\_ YES \_\_\_\_ NO

## NOT YOUR MOTHER'S TUPPERWARE PARTY! IT'S YOUR AUNT CASSIE'S!



**THE WOMEN OF**  
**CBE INVITE YOU TO**  
**WATCH AUNT**  
**CASSIE ROLLE**  
**SHOW YOU HOW TO**  
**SAVE MONEY AND**  
**THE ENVIRONMENT**  
**WITH TUPPERWARE.**



WOMEN OF REFORM JUDAISM  
stronger together

**WEDNESDAY, JULY 21 - 7 PM**  
**AT THE HOME OF RUTH ANN ROSSMAN IN CHATSWORTH**  
**RSVP: 818-709-7913**  
**BRING A FRIEND! BRING TWO. WHO'S COUNTING?**

For more info on any of these events, go to: [www.congregationbnaimet.org/sisterhood.php](http://www.congregationbnaimet.org/sisterhood.php)



## Last Day of Religious School

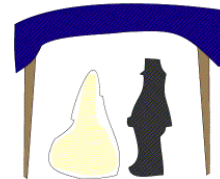


## CBE Pet Parade

*On June 29 CBE held its first "Pet Parade." After everyone introduced their pets, animal behaviorist Jody Epstein helped solve some common behavioral problems and talked about good pet nutrition. Rabbi Michele said a prayer for the pets.*







## Birthdays

7/1 Harry Shore  
 7/3 Jody Epstein  
 7/4 Diane Hetzel  
 7/8 Judith E. Sternberg  
 7/9 Jeffrey Plotkin  
 7/9 Bob Poehls  
 7/9 Karen Ribstein  
 7/10 Curtis Schneidereit  
 7/12 Glenn Barry  
 7/14 Catherine Weinstein  
 7/17 Jonathan Cohen  
 7/17 Eli Holland  
 7/18 Brandon Gould  
 7/18 Jeffrey Wohlner  
 7/21 Brian Horowitz  
 7/21 Steven York  
 7/23 Jeremy Stafford  
 7/25 Shai Levy  
 7/27 David Nusbaum  
 7/28 Erik Breiter  
 7/29 Samuel Patera  
 7/30 Michelle Foster  
 7/30 Reese Holland  
 7/31 Joshua Bordo  
 7/31 Robert Sherden  
 8/1 Gloria J. Hasson  
 8/1 Mark Mutal  
 8/3 Pamela Mikita  
 8/5 Regina Brandler  
 8/5 Emma Mikita  
 8/7 Andrew Hollander  
 8/7 Aryanna Ringer  
 8/7 Brandon Tellio  
 8/7 Melisa Tellio  
 8/9 Matthew Epstein  
 8/9 Lynne Kelly  
 8/9 Eliana Plotkin  
 8/10 Stacy Cohen  
 8/10 Michelle Forman  
 8/10 Carla Shaw  
 8/11 Mark Brandler  
 8/11 Jessica Breiter  
 8/11 Steven Friedman  
 8/11 Danny Jordan  
 8/12 Zachary Spike  
 8/13 Max Patera

8/13 Andrew Weinstein  
 8/15 Shoshana Micon  
 8/17 Mark Slotnick  
 8/17 Jeremiah Sovetky  
 8/18 Al Levy  
 8/19 Gabriel H. Rossman  
 8/19 Mindy Schneidereit  
 8/21 Melissa Bergmann  
 8/21 Jill Katell  
 8/22 Louis Tepfer  
 8/24 Maura Ostrowiecki  
 8/26 Karli Berger  
 8/26 Brittany Ribstein  
 8/27 Megan Smith  
 8/29 Laura Berger  
 8/29 Allen Lusk  
 8/30 Grace Eskenazi  
 8/30 Bennett Patera

## Anniversaries

7/1 Gary and Susan Spike  
 7/12 Eric and Stacy Cohen  
 7/17 Bob and Barbara Poehls  
 7/18 Earl and Carol Rosado  
 7/21 Ronald and Mindy Schneidereit  
 7/22 Mark and Cynthia Slotnick  
 8/1 Jerry and Jan Auerbach  
 8/2 Sheldon and Candy Kaminsky  
 8/3 Peter and Jennifer Rosenstein  
 8/8 John and Cindy Elhai  
 8/9 Andrew and Catherine Weinstein  
 8/10 Gerald and Gloria Hasson  
 8/12 Herschel and Laura Berger  
 8/12 Stan and Sandy Melnick  
 8/15 Lori and Dan Stanton  
 8/22 Mark L. Gould & Lisa Marlow  
 8/24 Steven and Holly York  
 8/26 Jeffrey and Tamara Plotkin  
 8/29 Wolf and Nubia Ascher

## Skirball Cultural Center Fundraiser



**SPECIAL DEAL - DISCOUNT TICKETS FOR  
THE SKIRBALL THAT BENEFIT CBE!**

**2 ADULT TICKETS FOR ONLY \$15!!!  
OPEN DATED - GOOD ANY TIME**

Located at 2701 North Sepulveda Blvd., Los Angeles, CA (just north of the Getty Center), the Skirball is one of the world's most dynamic Jewish cultural institutions, and among the most prominent cultural venues in the United States.

Normal general admission is \$10.

Go to [skirball.org](http://skirball.org) for information on this exciting Los Angeles landmark.

Tickets available at the Temple Gift Shop.

For more info, contact (805) 581-3723.

## Yahrzeits

7/1	Monique Galitz	Tammuz 19	8/6	Caridad Perez	
7/1	Karl Menke	Tammuz 19	8/7	Anne Hirschorn	Av 27
7/4	Matilda Di Donato	Tammuz 22	8/8	Katherine Diana Mutal	Av 28
7/4	James Steffens	Tammuz 22	8/11	Frances Shilkoff	Elul 1
7/5	Hyman Herstein	Tammuz 23	8/12	Frank August	Elul 2
7/5	Lillian Smith	Tammuz 23	8/12	Victor Ringer	Elul 2
7/6	Irene Goldbloom	Tammuz 24	8/12	Herman Scharf	
7/6	John Levin	Tammuz 24	8/14	Barbara Ann Kitt	Elul 4
7/7	Debbie Alderton	Tammuz 25	8/15	David Breiter	Elul 5
7/7	Bessie Keimon	Tammuz 25	8/15	Sylvan Greenwald	Elul 5
7/7	Leah Rose Naidorf	Tammuz 25	8/15	Jeff Levin	Elul 5
7/8	Fritz Finkbeiner	Tammuz 26	8/15	Art Schultz	
7/8	Cecilia Schwartz	Tammuz 26	8/15	Harry Shaw	Elul 5
7/9	Harry Goldberg	Tammuz 27	8/16	Irene Goldhammer	Elul 6
7/9	Lisa Rosenfeld	Tammuz 27	8/16	Phillip Goodman	Elul 6
7/9	Kenneth Waitz	Tammuz 27	8/17	Pearl Gelman	Elul 7
7/11	Debby Odens	Tammuz 29	8/17	Leonard Hollander	Elul 7
7/12	Frieda Davis	Av 1	8/17	Sol Pearce	Elul 7
7/13	Ruth C. Frolove	Av 2	8/17	Marlene Reese	Elul 7
7/17	Sherry Goldstein	Av 6	8/18	Seymour Gold	Elul 8
7/17	Uri Makiri	Av 6	8/19	Ann Glassman Cohen	Elul 9
7/18	Ruth Dacks	Av 7	8/20	Benjamin Wiseman	Elul 10
7/19	Medill Bienenfeld	Av 8	8/21	Iris Tuber	Elul 11
7/19	Carl Oliver	Av 8	8/22	Alvin Posnick	Elul 12
7/19	Abraham Pichkhadze	Av 8	8/23	Dorothy Finnk	Elul 13
7/24	Norman Wohlner	Av 13	8/24	Sandford Scharf	Elul 14
7/29	Jack Apelbaum	Av 18	8/26	Sarah Kaufman	Elul 16
7/30	Irving Pfefer	Av 19	8/26	Solomon Sussman	Elul 16
7/30	Daniel Scop	Av 19	8/27	Martin Abrams	Elul 17
7/31	Donald Marx	Av 20	8/27	Ada Scheinert	Elul 17
8/1	Abraham Jacob Frank	Av 21	8/28	Harry Bercow	Elul 18
8/1	Florence Neugroschl		8/28	Winfred Jackman	
8/1	Herman B. Watenmaker	Av 21	8/28	Tim Wolff	Elul 18
8/2	Herman Scharf	Av 22	8/29	Rose Fleischmann	Elul 19
8/4	Laura Bloch	Av 24	8/30	George Ribstein	Elul 20
8/4	Dianne Marks	Av 24	8/30	Barbara Rosen	Elul 20
8/5	Donald Boxer	Av 25	8/31	Dixie Cohen	Elul 21
8/5	Sheldon Cohen	Av 25	8/31	Lynn Marlow	Elul 21
8/6	Estelle Breiter	Av 26			



**Please check the current Yahrzeit information on the data sheet you received in your membership packet. Verify its accuracy and call the office with any changes or new Yahrzeit information.**

**During the year, you will receive reminders for upcoming Yahrzeit dates. We want to have complete and accurate information.**

**Call Michael Hollander with any questions regarding Yahrzeit data.**

**Thank you.**

### **How to observe a Yahrzeit at C.B.E**

Light a 24-hour memorial candle in your home at sundown on the evening that begins the yahrzeit (anniversary of death.) It is also customary to attend Shabbat services at Temple and recite the Kaddish. At Congregation B'nai Emet, names of your loved ones are read on the Friday evening **before** the Yahrzeit. If you observe the **Gregorian (English)** date, the name will be read **following** the yahrzeit date. It is suggested that you make a contribution to the Temple so that the memory of your loved one can be honored with an act of love and kindness.

## WHAT IS TISHA B'AV?

Tisha B'Av, the ninth day of the month of Av (which month coincides with July and/or August), is the major day of communal mourning in the Jewish calendar. Although a large number of disasters are said to have befallen the Jews on this day, the major commemoration is of the destruction of the First and Second Temples in Jerusalem in 586 B.C.E. and 70 C.E., respectively. Central to the observance of this day is fasting.



*Send Sweet Greetings this Rosh Hashanah*

# Rosh Hashanah Honey Fundraiser

Support  
Congregation  
B'nai Emet  
Religious School

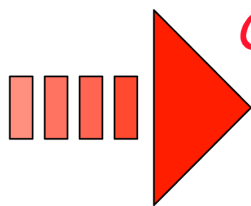
*What better way to wish family, friends and business associates a "Sweet and Healthy New Year" than sending a jar of honey?*



This distinctive 8-ounce jar of kosher honey arrives in time for the Rosh Hashanah holiday, decorated with a festive label, and includes a personalized card reading "L'Shana Tova - wishing you a Healthy and Happy New Year."

This card also lets the recipients know that a donation has been made in their honor to Congregation B'nai Emet Religious School.

Your cost is only \$10.00 per jar which includes shipping and handling within the United States. We will gladly mail orders outside the United States for an additional fee.



***ORDER SOON! ORDERS PLACED  
AFTER JULY 12 WILL INCUR AN  
EXTRA SHIPPING CHARGE!!!***

***Order online by September 1, 2010 to  
ensure delivery by Rosh Hashanah.***

To order honey go to [www.congregationbnaimet.org](http://www.congregationbnaimet.org), click on the honey link and follow the step-by-step instructions.

For more information or help with ordering, please contact:  
Deborah Bass, VP Schools, 818-321-5989  
[deborah.bass.2001@gmail.com](mailto:deborah.bass.2001@gmail.com)



# NEED A CARD? MAKE IT A DONATION!

Send a thoughtful greeting for sympathy, birthdays, congratulations, or just to reach out to someone!



Cards from the Women for Reform Judaism's YES Fund go to support projects for Youth, Education and Special Projects here and in Israel, such as rabbinic training and Israeli preschools for needy children.

Each card is hand written and mailed for you; all you have to do is contact us with the information and send a check made out to CBE Sisterhood.

Prices start at \$3.00 for a plain card and \$6.00 for a colored picture card.

Other items are available. To purchase a card, contact Lynne Kelly at [lkelmom@aol.com](mailto:lkelmom@aol.com).

Digital Wide Format,  
Printing, Copying

**Tim R. Anderson**  
Manager

"Your Printing  
and Copying Specialist"

**Copy  
Center, Too!**

P 805.557.4552

F 805.557.4556

[tim@copycentertoo.com](mailto:tim@copycentertoo.com)

[copycentertoo.com](http://copycentertoo.com)

822 Hampshire Road, Suite F  
Westlake Village, Ca 91361



OPEN 7 DAYS

*Michael's Flowers*

1951 Sequoia Ave.  
(Corner of L.A. & Sequoia)  
Simi Valley, CA 93063

(805) 527-9104  
(800) 554-9083  
(805) 522-1705 Fax

**SUMMER'S A GREAT TIME FOR GIFT CARDS!**



**STOCK UP ON VACATION NEEDS**

To purchase gift cards, contact Gift Card Chair Bobbie Sion at [sionfam@gmail.com](mailto:sionfam@gmail.com) or leave her a message at the temple: (805) 581-3723.

Go to <http://www.congregationbnaimet.org/images/FamilyOrderForm.pdf> for the NEW downloadable gift card order form and to <http://www.congregationbnaimet.org/FamilyOrderForm926.pdf> for a NEW UPDATED list of many other cards you can order.

You can also order a personalized certificate so that your recipients can choose their own cards from our large selection.

B'nai mitzvah students:  
Register for the gift cards you want!!!

**Good Dog! Dog Training**

**In Home Training**

- \*Basic to Advanced Obedience
- \*Overcoming Behavioral Issues at Home or in Public
- \*Health & Nutrition Guidance
- \*Potty Training

**818-389-5842**

**Good Dog! Dog Training by Jody Epstein**

In-Home Behavioral Consultations  
Private Obedience Lessons  
Group Obedience Classes

**818-389-5842**

<http://gooddog-dogtraining.com>

**Special Rates for CBE Members**



# SIMI'S HOUSE OF JUDAICA

Located  
at CBE



For all  
your  
Judaica  
Needs!

Call (805) 581-3723  
for more information,  
hours of operation &  
holiday boutiques.

Holiday Items  
Shabbat Needs  
Bar/Bat Mitzvah Registry  
Huge Selection of Jewelry  
Kippot & Tallises  
Gifts for All Occasions  
Mah Jongg Goodies  
Greeting cards  
Personalized Kippot &  
invitations by special order

Cell: 805.501.8071  
Office: 805.584.3683  
Fax: 805.620.3740

**JO ANN POOLE**  
Poole Your Efforts!  
REALTOR®

E-Mail: JoAnn@JoAnnPoole.com  
Web: www.JoAnnPoole.com

"Voted Best Auto Repair  
& Body Shop in Simi Valley"

**Auto Body Unlimited Inc.** Since 1986

**BEFORE** **AFTER**

- Written Warranty
- Insurance Deductible
- Financing Available
- Mufflers, Exhaust & Intake
- Color Match Guarantee in Writing
- Paintless Dent Repair

**M-F 7:30-6PM • Most Sat 8-12**

**583-4848**

Auto Body Unlimited Inc  
4610 E. Los Angeles Ave.  
Simi Valley  
www.thecrashdoctor.com

NEED A RENTAL? **Enterprise** 805-582-6444

## New Directions Event Planning, Inc.

B'nai Mitzvahs • Weddings • Anniversaries • Birthdays  
Theme Parties • Corporate Events • Picnics  
Grand Openings • Holiday Celebrations

- Theme Decor
- Photography
- Videography
- Floral Design
- Entertainment
- Props / Rentals
- Dance Giveaways



- Catering
- Balloons
- Locations
- Invitations
- Bands/DJ's
- Party Favors
- Transportation

Twenty Years of  
Successful Events

Voted #1 in  
Ventura County

We will produce the entire event or coordinate any part of it!

**(805) 581-2602**

www.NewDirectionsEvents.com

### Imagine Your Ad Here

#### Business Card size

\$100.00 per year

\$45.00 for 1 issue

#### 1/4 page ad

\$165.00 per year

\$65.00 for 1 issue

#### 1/2 page ad

\$265.00 per year

\$95.00 for 1 issue

#### Full page flyer

\$420.00 per year

\$130.00 for 1 issue

Call Temple office  
For more information

## Schedule of Services, Candle lightings, & Torah Portions

<u>Date</u>	<u>Candle lighting</u>	<u>Service</u>	<u>Torah Portion</u>
July 2/21 Tammuz	7:53 PM	Family Service 7 PM	Pinchas—Num. 25:10-30:1
July 9/28 Tammuz	7:52 PM	Shabbat Service 8 PM	Matot-Masei—Num 30:2-36:13
July 16/6 Av	7:49 PM	Shabbat Service 8 PM	Devarim—Deut. 1:1-3:22
July 20		<b>Tisha B'Av</b>	
July 23/13 Av	7:46 PM	Shabbat Service 8 PM	Vaetchanan—Deut. 3:23-7:11
July 30/20 Av	7:41 PM	Shabbat Service 8 PM	Eikev—Deut. 7:12-11:25
Aug. 6/27 Av	7:34 PM	Family Service 7 PM	Re'eh—Deut. 11:26-16:17
Aug. 13/4 Elul	7:27 PM	Shabbat Service 8 PM	Shoftim—Deut. 16:18-21:9
August 14		<b>Joshua Bordo</b> Bar Mitzvah, Mt. Sinai 4 PM	
August 20/11 Elul	7:19 PM	Shabbat Service 8 PM	Ki Teitzei—Deut. 21:10-25:19
August 21		<b>Daniel Klein</b> Bar Mitzvah, 10 AM	
August 27/ 18 Elul	7:11 PM	Shabbat Service 8 PM	Ki Tavo—Deut. 26:1-29:8
August 28		<b>Eliana Plotkin</b> Bat Mitzvah, 10 AM	

Check out our web site at <http://congregationbnaiemet.org>

### Congregation B'nai Emet

**P.O. Box 878**  
**Simi Valley, CA 93062-0878**

### DATED MATERIAL



—Please do not delay delivery—

Chai Lites Bi-Monthly Newsletter

Volume 31 Issue 5