



Chai Lites

Congregation B'nai Emet
9 West Bonita Dr.
Simi Valley, CA 93065
Phone: 805-581-3723
info@cbesimi.org
www.cbesimi.org



Find us on Facebook!
www.facebook.com/cbesimi/

Spring 2022
Adar I-Adar II-Nisan-Iyyar-Sivan 5782
Vol. 43, Issue 3

Dear Friends – Shalom Chaverim,

It's now March, we're changing the clocks this week, and the days will be longer once again. We're looking forward to celebrating Purim next week, and also Passover next month. We've started coming back to the actual shul (1st Friday and Saturday of each month); the kids are thrilled (really!) to be in Religious School in person, and we are feeling hopeful.

At the same time, our hearts are filled with sadness as we watch the unfolding of Russia's assault on and invasion of Ukraine, the tragic destruction, and masses of people fleeing. *Again?* we ask ourselves. Will war and conquest ever cease? And then we have Passover – the oldest-known holiday in Western civilization. And, perhaps, it is the most significant and profound of all our Jewish festivals as well. Celebrating freedom and liberation from slavery (or war and conquest), teaching us to welcome and share with the poor, are indeed important values. Watching the turmoil and upheaval in the world today, the ideals of freedom, democracy, and human dignity take on even greater meaning.

I've said many times that on Passover, we tell a story of the past, while we relate it to our present experiences; and we tell it with hope and optimism for the future. In a way, it is an eternal story – an old story that never grows old, because it is still relevant and still offers



hope. At the end of the seder we sing, "This year we are here, next year may we be in Jerusalem. This year we are still slaves, next year may we all be free". Some rabbis comment that we can read Jerusalem – Yeru-sha-la-yim – as "ir-shalem" or "ir-shalom", the city of peace. We pray that there will be peace, not only in Jerusalem, but in every city, for all people.

This year we will have a virtual Community Seder on the second night of Passover, on Saturday April 16th at 6 pm. I hope you'll join us. Each year it gets better and better (whether in person or on-line, we're always adding new ideas and fine-tuning)! I hope you'll be involved in any way you can.

Wishing you and your family, happy and meaningful Purim and Pesach holidays. Also wishing you good health, safety, and strength in these uncertain times.

Shalom u'vrachah,
Rabbi Michele Paskow

Below: Cantor Russ, Gabe and Jill Katel, and Rabbi Michele, back in the sanctuary again at last for First Fridays shabbat services!



Board & Affiliates

Michele Paskow <i>Rabbi</i>	Suzanne Mahler <i>VP, Social Action</i>
Michael Russ <i>Cantor</i>	RuthAnn Rossman Meridith Patera <i>Sisterhood Co-Presidents</i>
Dr. Les Sutton <i>President</i>	Open Position <i>Men's Club President</i>
Steve Rossman <i>Executive VP, Facilities</i>	Cindy Shilkoff <i>Temple Office Admin.</i> <i>Dir. of Communications</i>
Ryan Richmond <i>Treasurer</i>	Lindy Schneider <i>Preschool Director</i> <i>Office Manager</i>
Daryl Sutton <i>Secretary</i>	Meridith Patera <i>Religious School Admin.</i>
Geri Brandler <i>Financial Secretary</i>	Suzanne Epstein <i>Communications Editor</i>
Tamara Patera <i>VP, Communications</i>	Bobbie Sion <i>Gift Shop Admin.</i>
Brian Marcus <i>VP, Fundraising</i>	Julie Bienenfeld Mutal <i>Choir Director</i>
Alan Mann <i>VP, Membership</i>	Ken Bahr Michael Hollander Max Patera Steve Rossman <i>Tech Team</i>
Natalie Richmond <i>VP, Programs</i>	
Open Position <i>VP, Religious School</i>	

Minutes of CBE board meetings are available upon request.

Contents

Rabbi's Greeting	1
Presidential Ponderings	3
Women of CBE	4
Social Action	6
Recent Events	8
Religious School News	13
Schedule of Services, Etc.	14
Upcoming Events	15
Mazel Tov!	16
Recent Donations	16
Yahrzeits	19

Please send any temple mail or donations to:
Congregation B'nai Emet
PO Box 878
Simi Valley, CA 93062-0878

If you or someone you know would like to receive our weekly communications, go to our website (cbesimi.org), scroll to the bottom of any page, and look for the simple sign-up form. Alternatively, you can email info@cbesimi.org with your request. If you think you are already signed up, but are not receiving them every Wednesday morning, please check your Spam folder.

Turn your car into a Mitzvah-
Donate it today!

Free pick-up, tax write-off, what's not to like?



Call: 855-500-RIDE or go to
careasy.org/nonprofit/Congregation-Bnai-Emet

Become a Chai Lites Sponsor!

A great way to promote your business while also supporting CBE! Contact the temple office at info@cbesimi.org for more information.

Ad Size	Single Issue	Full Year (4 Issues)
Business Card	\$45.00	\$100.00
1/4 page	\$65.00	\$165.00
1/2 page	\$95.00	\$265.00
Full page	\$130.00	\$420.00

Presidential Ponderings



Shalom CBE Family and Friends,

Does anyone remember what their life was like pre-Covid-19, pre-Delta variant, and pre-Omicron? Hard to believe, but it has been two long, tedious years of hibernation,

isolation, solitude, distancing, and avoidance from relatives, friends, and acquaintances. How many of you have frequented movies, theatres, restaurants, stores, or traveled at the same frequency as in the pre-Covid era? Can we revert back to what our lives were like, or have we been converted to a new existence?

February 16, 2022 is a day we all should remember, the day Ventura County's Health Department finally lifted the indoor mask requirement for those who are fully vaccinated. Hooray, hooray, but let's not forget that we still need to be cautious and follow preventive strategies (such as wearing well-fitting masks, staying home and testing when symptomatic), in situations where added protection for ourselves and others is warranted.

CBE has weathered and endured this omnipresent virus rather remarkably. Yes, we have had to change our way of reaching our constituents. For most of the past 2 years, in the absence of live services in our sanctuary, CBE has still provided meaningful, inspirational weekly Shabbat services via Zoom. We have to thank our "Geek Squad" quartet of Steve Rossman, Michael Hollander, Ken Bahr, and Max Patera for taking on this monumental endeavor. We also have to thank all of you who contributed so generously to the "Buy A Cam" campaign, which enabled CBE to purchase more than \$10,000 in state-of-the-art audio, visual, and computer equipment to enhance our Zoom experience.

In light of the sharp decline in Covid cases, Ventura has updated the county's protocols for holding inside services. Fully vaccinated people are not required to wear masks, although it is highly recommended in close quarters; only unvaccinated persons still must mask. Starting this month, the first and third Friday night Shabbat services will be live in the sanctuary beginning at 7 PM. For those of you who still feel more comfortable at home wearing your lounging pjs, the services will be simultaneously Zoomed for your viewing pleasure. No subscription or membership is necessary. Services are free, although we do encourage you to sponsor the Oneg or perhaps make a small donation to the temple. Remember my mantra: no donation is too small, but the bigger the better.

If you have been diligently reading the Wednesday CBE Weekly News Email, I'm sure you are aware of our latest capital improvement campaign, "Lights and Stripes." Under the guidance of our Executive Vice-President, Steve "who can do it all" Rossman, we will be adding much-needed lighting to the parking lot, in addition to resurfacing and striping of the asphalt. A project of this magnitude takes a lot of shekels, approximately ₪38,000. Our goal is to raise \$11,750, the equivalent of ₪38,000. Please, please give what feels comfortable.

Best wishes and happy Spring from myself and the CBE Board of Directors. May this year be a prosperous and healthy one for all of us.

אני מאחל לך את הטוב ביותר

I wish you all the best,
Les A. Sutton, DDS
President, Congregation B'nai Emet

Women of CBE

Sisterhood Happenings

Thank you to the wonderful women who are continuing to serve on our board, and to the generous newcomers who volunteered to join us. Others are still welcome to become officers or committee members, or just give us ideas for programs and fundraising opportunities. Now that we will again (finally!) be having monthly services at the temple, we can use extra help with oneq preparation and serving.

The Women of CBE have continued our donations to the temple and religious school. We have also given generous amounts to help the Denver Jewish community following the tragic wildfires there and to the Ukrainian Relief Fund of the Jewish Federations. We have had successful restaurant fundraisers and continue to raise money as always from oneq donations, tribute cards, gift cards, and the Gift Shop, which will once again be open on Temple service days.

Our April meeting will be a brief installation ceremony for the new and returning board members, followed by a Zoom talk by founding and early members of CBE, to give us the history of our congregation and its development. In May, Meridith's brother David Shaw will do a presentation on his new novel, *The Plagues of Pharaoh*. It's the Passover story told from an Egyptian point of view and is just fascinating. See more information on these events in these pages, and on the website, as details are formalized.

Join us! Without you we are one woman short.

In sisterhood,
Meridith Patera
RuthAnn Rossman
Co-Presidents, WCBE



JOIN!

<https://www.cbesimi.org/sisterhood-membership>

DONATE!

<https://www.cbesimi.org/support-the-sisterhood>

Unless otherwise noted, RSVP to any and all sisterhood events by emailing:

Jill Katel: j.katell@yahoo.com or

Alice Fiducia: jafiducia@gmail.com

Did you know? You can now submit oneq sponsorship donations online [HERE!](#)

If you prefer the post, please send Sisterhood mail & donations to:

Women of CBE, c/o Meridith Patera
15050-C Campus Park Drive
Moorpark, CA 93021

Tribute Cards from Women of CBE


Need a Card? Make it a Donation!

Buy your cards for all occasions from WCBE, and you'll be supporting both our Sisterhood and the Women of Reform Judaism's youth education efforts and special projects, in both the USA and Israel, through their YES Fund.



Prices start at just \$3.00, and your card will be hand-written and mailed out for you! And now, you can buy online! Get the beautiful discontinued designs shown here and more, before they are gone! Go to www.cbesimi.org/support-the-sisterhood to see all available card designs and additional details. Contact Lynne Kelly at lkelmom@aol.com with any questions.

Women of CBE



Women of CBE

**More Purim Fun
than you thought you
could have!**

**Tuesday, March 8, 7 pm
on Zoom (see link below)**

Meridith will lead the program


WCBE Presents
**The Little Shul that Could-
and Still Does!**
A History of CBE



Meet us on Zoom for a brief installation ceremony for our new and returning Board members. Then, listen as founding and early members of CBE delve into the history and development of our beloved congregation. What you learn might surprise you!

**April 12, 2022
7:00 pm on Zoom**

WCBE PRESENTS
The Plagues of Pharaoh
AUTHOR TALK
MAY 10, 2022, 7:00 PM ON ZOOM



Join us as Meridith Patera's brother, David Shaw, presents his new novel, a clever and thought-provoking retelling of the Exodus through the eyes of a loyal Egyptian, as he resists his own exodus from all he has ever known and believed to be true.

Advertisement

Simi House of Judaica

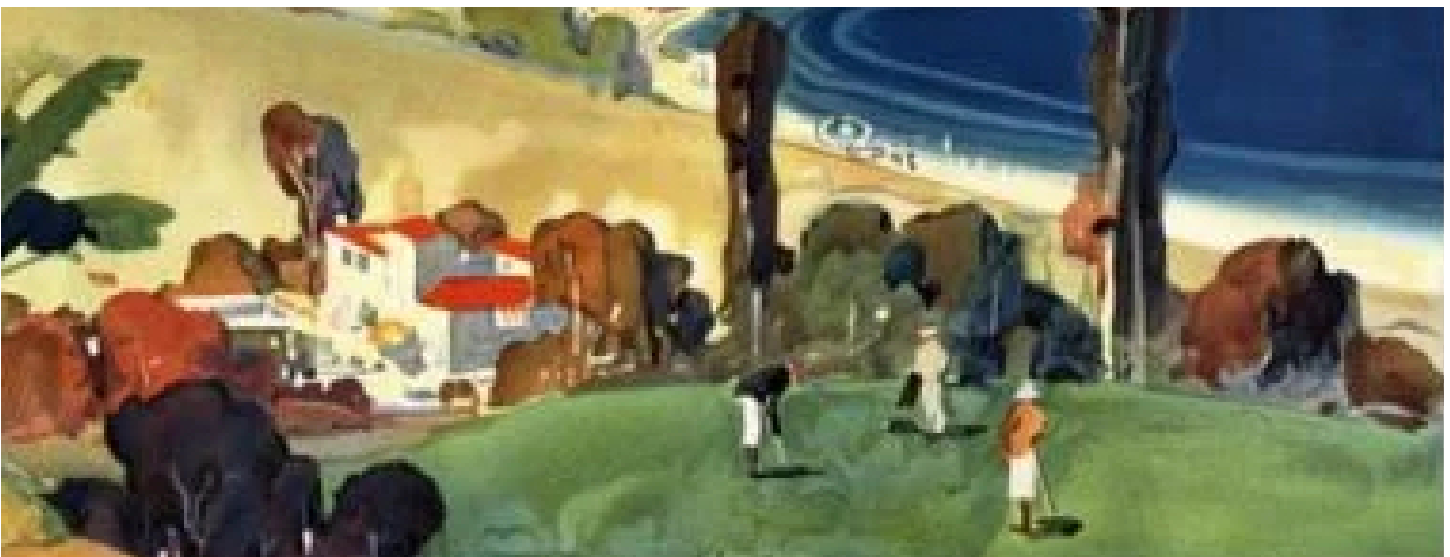


Large selection, great variety ~ gifts & supplies for all occasions

Located at
Congregation B'nai Emet
9 W. Bonita Dr.
Simi Valley, 93065

Call (805) 581-3723
for hours of and more information

Jewelry
Greeting cards
Personalized kippot
Bar/Bat Mitzvah registries
Invitations by special order
Gift cards for Amazon, gas stations, & many more!



Feed the Needy



Left: For December's holiday feast, Kathy Smith gets in the festive spirit as a jaunty Mrs. Claus.



Above: Tami Plotkin and Suzanne Epstein prepare the schnapps (so to speak).



Left: Ruth Ann Rossman hustles one of her more brilliant ideas, orange halves stuffed with squash (inset). As VP of Social Action Suzanne Mahler says, "The food was all Ruth Ann's inspiration. A lot of heart went into that meal."



Above, left to right: Brian Marcus, Max Doepping, Sandy Miller, Suzanne Crawford-Mahler, Jeff, Tami, and Eliana Plotkin Feed the Needy in January.

Help Ukraine

Regardless of individual political affiliation, we have all been watching in horror the atrocities of Russia's invasion of Ukraine. At time of writing, tens of thousands of Ukrainians have become refugees, and many more are still trapped in the war zone or fighting to defend their country. The free world has been awed and humbled by the courage and defiance of the Ukrainian people and their president (who happens to be Jewish). Even when the conflict comes to an end (which we hope and pray will be soon, through diplomacy), those directly affected will continue to need international support to rebuild their lives and their homeland.

I am no expert in international policy or charitable giving, I just try to put my money where my mouth is when it comes to Tikkun Olam. In that spirit, below are three highly-rated charities I am donating to that are on the ground helping all Ukrainians, Jews and non-Jews alike. If you have another organization in mind, you can check their rating on websites like Charity Navigator and Charity Watch, to make sure your funds will be used wisely. You can also contribute to, or volunteer with, the Conejo Interfaith Refugee Team: see their flyer at right for more information.

One other note: Many of you may already know this, but it's hard to break the habits of a lifetime, and we are all aware that words really do matter. In the past, the country was known as "*the* Ukraine", but this is no longer considered acceptable, because it implies that it is a territory of another country, as opposed to being a sovereign nation in its own right. Statehood is the very thing Ukrainians are fighting and dying to affirm, so our support must start by making this change.

Sincerely,
Tamara Patera,
VP of Communications and Chai-Lites Editor

Conejo Interfaith Refugee Team

Help Newly Arrived Refugees

The **Conejo Interfaith Refugee Team** works with the **IRC** (International Rescue Committee-LA ([Link incorrect-see below for correct link.](#))) to welcome and assist newly arrived families from Afghanistan and other areas settling in SoCal. We are helping with supplies, furniture, and services to meet individual family needs and requests.

<https://www.rescue.org/united-states/los-angeles-ca>

If you can help, use the Sign-Up Genius link below to volunteer items or services:

<https://www.signupgenius.com/go/508094caca92ea2f85-help>

Checks, in any amount, are welcome. You can mail to the dedicated fund at the United Methodist Church, 1049 S. Westlake Boulevard. Westlake Village, CA 91361. Make payable to **UMCWV**, write "Refugee Team" on the memo line. Or directly at: www.umcww.org. Scroll down to the donate button at the bottom of the page, then scroll down again and click "Refugee Fund."

Cash grants paid directly for rent, utilities, security deposits, and bills for supplies, and emergencies.

The **Conejo Interfaith Refugee Team** is a diverse ecumenical coalition of faith groups and individuals in the Conejo and western Los Angeles County area. **IRC** works to help resettle families approved by the United States government.



HIAS

<https://www.hias.org/>

Founded over a century ago as the Hebrew Immigrant Aid Society, HIAS now honors our history as "strangers in a strange land" by aiding refugees fleeing humanitarian crises around the world.

American Jewish Joint Distribution Committee

<https://www.jdc.org/>

Another hundred-plus-year-old Jewish charity founded in response to the needs of fellow Jews that has expanded its mission in modern times to include global crisis response.

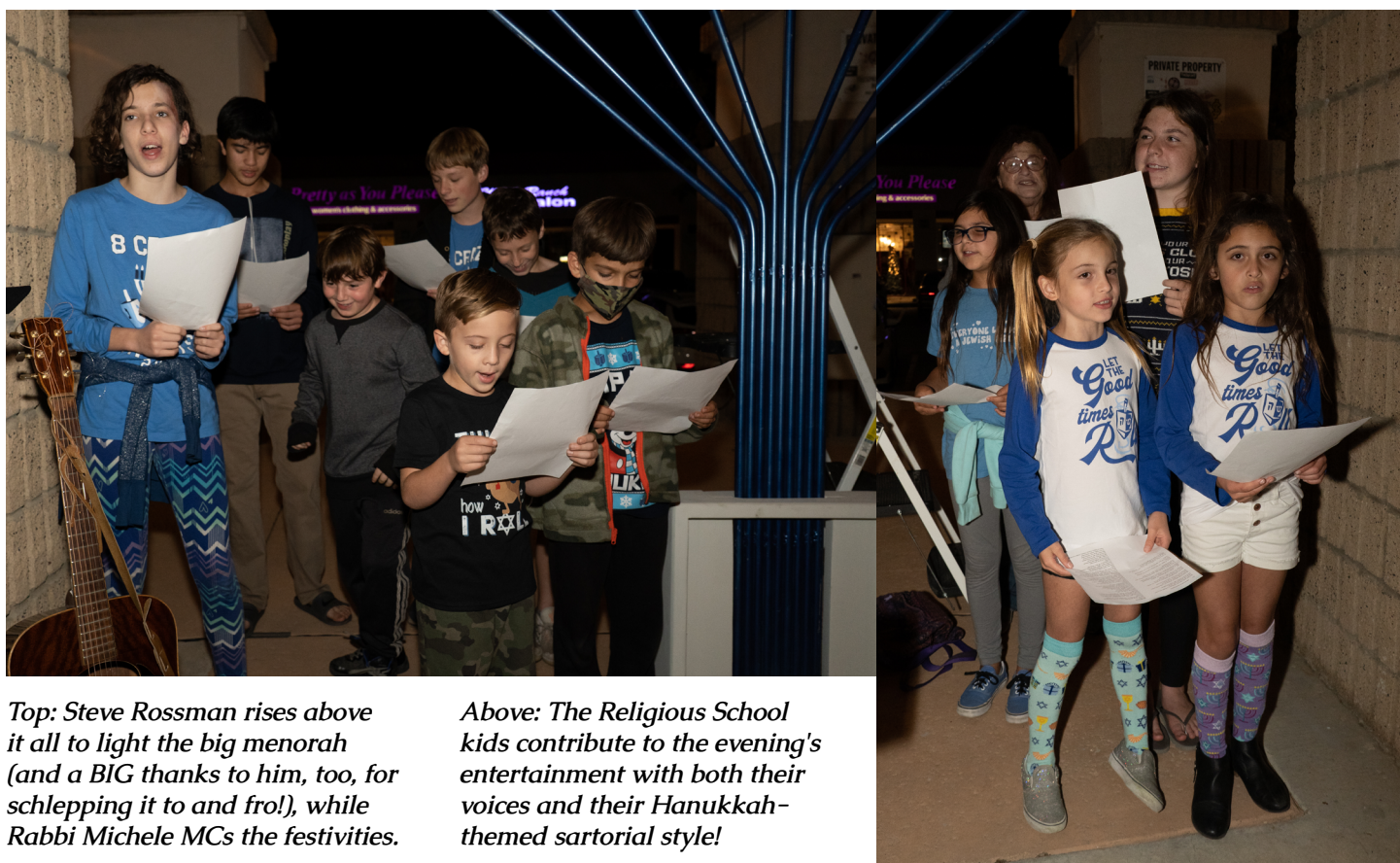
The Center for Disaster Philanthropy

<https://disasterphilanthropy.org/>

A non-sectarian organization that focuses on long-term support, continuing aid after a crisis has faded from the headlines.

Community Menorah Lighting

We had a great turnout for our annual community menorah lighting ceremony and celebration, with so many people bundling (and masking) up to brave the chill for some COVID-safe fun!



Top: Steve Rossman rises above it all to light the big menorah (and a BIG thanks to him, too, for schlepping it to and fro!), while Rabbi Michele MCs the festivities.

Above: The Religious School kids contribute to the evening's entertainment with both their voices and their Hanukkah-themed sartorial style!

Recent Events



Left: Julie Bienenfeld-Mutal conducts the safely-spaced CBE Choir, happy to be singing together again at last. Okay, maybe they're not quite as cute as the kids, but they sound fantastic!

Below: Tami Plotkin busts out her irrepressible Hanukkah Hat—the holiday wouldn't be the same without it crowning her smiling face!



Left: Attractions at the event included jelly donut holes and hot beverages, plus an unusual candle craft featuring squeeze bottles of colored wax "sprinkles".

Below: What a crowd—and that's only about half of it!



Recent Events



Opposite, clockwise from top left, some of the faces of CBE: Sandy Miller representing for both Israel and the good old US of A; Merle and Cantor Russ really puttin' on the Hanukkah Ritz; Frieda and event photographer Ken Bahr find a moment amid the crazy for an adorable snap of them in their matching family t-shirts; the famous newlyweds, Max and Tamara Patera, accompanied by Max's Movember facial festoon, still around for this photo due to Hanukkah's early arrival in 2021. Anything to support men's health awareness, right?

Many, many thanks to Natalie and Ryan Richmond, who planned this fantastic event, and to Ruth Ann and Steve Rossman for their usual indefatigable help with set-up, break-down, and everything in between!



This page: The event featured a sure-fire fan favorite: everyone loves a balloon animal or, er, alien? Thanks to Joe's Party Animals for the out-of-this-world creations!

Recent Events



Tu BiShvat Hike

Congregants who turned out early on a damp morning for a Tu BiShvat hike were rewarded with a rainbow, great views, and breakfast afterward.





The students of the Religious Schools show off some recent projects. Above, golden trees in the style of Gustav Klimt, in honor of TuBiShvat. Below, dressing Joseph in his coat of many colors.



Upcoming Events

Schedule of Shabbat Services, Candle Lightings, & Torah Portions

All Shabbat services will continue to be available via Zoom. Zoom links are sent out via email. In-person services will be held as scheduled, unless there is a change in the COVID situation.

<i>Date</i>	<i>Candle Lighting</i>	<i>Service</i>	<i>Torah Portion</i>
3/4 (1 Adar-II)	5:35	First Fridays Multi-Access Shabbat Evening Service, 7 pm	Pekudei (Ex. 38:21-40:38)
3/5 (2 Adar-II)		First Saturdays Multi-Access Shabbat Morning Service, 10 am	
3/11 (8 Adar-II)	5:41	Shabbat Service, 7 pm on Zoom	Vayikra (Lev. 1:1-5:26)
3/17 (14 Adar-II)		Purim	
3/18 (15 Adar-II)	6:47	Purim Event, 7 pm at CBE	Tzav (Lev. 6:1-8:36)
3/25 (22 Adar-II)	6:52	Shabbat Service, 7 pm on Zoom	Shmini (Lev. 9:1-11:47)
4/1 (29 Adar-II)	6:58	First Fridays Multi-Access Shabbat Evening Service, 7 pm	Tazria (Lev. 12:1-13:59)
4/2 (1 Nisan)		First Saturdays Multi-Access Shabbat Morning Service, 10 am	
4/8 (7 Nisan)	7:03	Shabbat Service, 7 pm on Zoom	Metzora (Lev. 14:1-15:33)
4/15 (14 Nisan)	7:08	Erev Passover/Shabbat (seder/service details TBD)	
4/16 (15 Nisan)	8:18	Passover	
4/22 (21 Nisan)	7:14	Shabbat Service, 7 pm on Zoom	
4/29 (28 Nisan)	7:19	Shabbat Service, 7 pm on Zoom	Achrei Mot (Lev. 16:1-18:30)
5/6 (5 Iyyar)	7:25	First Fridays Multi-Access Shabbat Evening Service, 7 pm	Kedoshim (Lev. 19:1-20:27)
5/7 (6 Iyyar)		First Saturdays Multi-Access Shabbat Morning Service, 10 am	
5/13 (12 Iyyar)	7:30	Shabbat Service, 7 pm on Zoom	Emor (Lev. 21:1-24:23)
5/20 (19 Iyyar)	7:36	Shabbat Service, 7 pm on Zoom	Behar (Lev. 25:1-26:2)
5/27 (26 Iyyar)	7:41	Shabbat Service, 7 pm on Zoom	Bechukotai (Lev. 26:3-27:34)

Upcoming Events

Welcome to shushanville
 Post-Pandemic Purim Extravaganza!
Fri March 18th, 7:00-8:30 pm
 Come in costume and enjoy four fun stations:

-  **Purim Masquerade**
With Natalie Richmond
-  **Sgt. Schlepper's Singalong Grog**
With Cantor Russ & Julie Bienenfeld
-  **Delicious Irony: Cookie Creations**
With Tami Plotkin
-  **The Book of Esther: Unmasked**
With Rabbi Michele

This event is FREE but RSVPs are REQUIRED
 To register, go to the website, or email info@cbesimi.org
 No service, but there will be an opportunity to say kaddish

Not Your Mama's Manischewitz
Shabbat Social
Sat. April 2nd, 10:00 am

Join us for our First Saturdays in-person Shabbat morning service at CBE, followed by a hosted lunch and casual wine-tasting, where we will sample a few kosher pours in preparation for the upcoming Passover holiday.

This event is FREE, but you MUST RSVP by March 31st at cbesimi.org!

Sponsored by the Suttons, in memory of their parents.



Virtual Passover Seder
Sat. April 16th, 6:00pm on Zoom

Join your CBE family for a seder, singing, and schmoozing on the second night of Passover. Bring your own dinner, matzah, and wine!

Price per screen: Members \$36, Non-Members \$40
 Register and pay online at CBESimi.org





Books AND Bagels

Apr. 24th, 9:30 am, on Zoom

THE ALICE NETWORK
 by KATE QUINN

A year into the Great War, Eve Gardiner burns to join the fight against the Germans, and gets her chance when she's recruited to work as a spy. Thirty years later, in the aftermath of World War II, college girl Charlie St. Clair is pregnant, unmarried, and on the verge of being thrown out of her family. The collision of these two women will launch them both on a mission to discover the truth, in a book NPR says has "history, suspense, romance, and women kicking butt. I couldn't put it down."


Board Elections!
 Vote online from now until Tuesday, March 22nd at 5:00pm, or join us for the General Meeting that same evening at 7:00pm on Zoom (link will be sent to all members via email). One vote per member household.

Click on the link below to vote now!

<https://forms.gle/NBsWeSf98hFeyDNQ8>

Upcoming Events

Eva Bahr's Bat Mitzvah Project:

Arroyo Simi Bike Path Cleanup

Sun. Apr. 24th 2022, 2:00 pm

Arroyostow Park
1700 Stow St., Simi Valley

Join Eva in celebrating
Earth Day by helping
maintain an important
local green space!

Trash bags and
disposable
gloves will be
provided.

We will pick up litter along the
path from the meeting spot to the
Simi Valley Metrolink station (about 1 mile).

Can't join us in person? You can still participate!
Take a photo of yourself cleaning up your
neighborhood and post it on Facebook using
#CBEcleansimi. Don't forget to include
@Congregation B'nai Emet in your caption!

Bands, BBQ, & Bimah

Live at CBE! - Sat May 14th - 6:00pm

Join us for Havdalah, followed by a
BBQ supper and performances by:

The Revolving
Doors 2.0

with
Suzanne Mahler

DVR
with
Ken Bahr



Havdalah is free & open to all ages

Tickets for dinner/band performances are \$65
per person (21 and over only), and include food
and 1 drink

See website for additional details about menu, cash bar,
sponsorship packages, group discounts and more!

Register by May 9th!

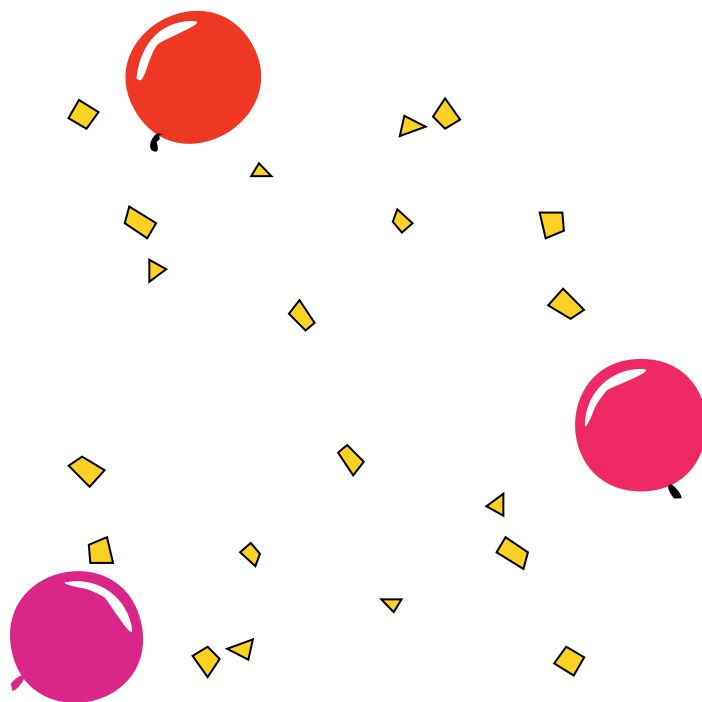
Birthdays

Kathy Alfred	3/3	
Jerry Bergmann	3/3	
Michael Mutal	3/3	
Tamara Patera	3/4	
Suzanne Mahler	3/11	
Amy Tellio	3/18	
Marla Bergmann	3/19	
Wayne Schultz	3/19	
Sheldon Liebmann	3/22	
Merle Russ	3/24	
Jesse Esqueda	3/29	
Les Sutton	3/29	
Orna Adams	4/5	
Ian Bahr	4/6	15th
Todd Schneider	4/11	
Maximus Doepking	4/13	16th
Cameron Kritzer	4/13	17th
Ken Epstein	4/14	
Rabbi Michele Paskow	4/15	
Dante Kritzer	4/16	12th
Stacey A. Nadler	4/16	
David Baxter	4/19	
Maylee Doepking	4/20	14th
Sheryl Hammer	4/27	
Glen Knecht	4/28	
Renee Kieselbach	4/30	
Emily Doepking	5/5	
Minnie Anzo	5/8	98th!
Julie Ranelletti	5/9	
Ronnye Sacks	5/9	
Carol Rosado	5/10	
Dawn Rozdial	5/10	
Keith Kelly	5/11	
Isaac Levy	5/15	
Belinda Geiger	5/16	
Paige Esqueda	5/17	10th

Daniel Levy	5/17	15th
Alan Mann	5/17	
Paul Venhuizen	5/19	
Ruth Ann Rossman	5/22	
Meridith Patera	5/23	
Danielle Eglick	5/25	
Zelda Shabah	5/25	
Jeffry Tellio	5/25	
Geri Brandler	5/26	
Steve Rossman	5/26	
Shirley Sofer	5/28	

Anniversaries

Kathy Alfred and Milton Avile	3/28	34th
Ken and Frieda Bahr	4/10	17th
Daniel and Geri Brandler	4/10	51st
Suzanne and Andrew Mahler	5/15	6th
Dean & Orna Adams	5/25	10th



Recent Donations

Building Improvement Fund–Lights & Stripes

Jesse & Dale Charnick

Alice Fiducia

In memory of Joel Grauman

Benni Freund

Bob & Lana Fricke

Mark & Belinda Geiger

In honor of Rabbi Michele

Bert & Marla Goldberg

Keith & Lynne Kelly

Isaac & Vivian Levy

Michele Paskow

In honor of Barbara & Bob Poehls

Bob & Barbara Poehls

Jeffrey Ringer

In memory of Earl Rosado, Linda Ringer, Marvin Cohen, and Sarkis Ambartsumyan

Carol Rosado

In memory of Earl Rosado

Steve & Ruth Ann Rossman

In memory of David Bloch, Hyman Bloch, Laura Bloch, Pearl Bloch, Abraham Jacob Frank, Dianne Marks, Stephanie Martin, and Molly Ann Schwartz

Cantor Michael & Merle Russ

In honor of CBE Board & Staff

Wayne & Shari Schultz

Paul & Zoe Venhuizen

In memory of Luitje Venhuizen

Women of CBE

Electronic Transaction Fee Donation

Carol Rosado

Daniel & Debra Schranze

Maxine Seidel & Thomas Sumner

Paul & Zoe Venhuizen

End of Year Donation

Shari Hack

Catherine Holst

Roberta Lester

Cantor Michael & Merle Russ

Stacey Nadler & Ron Schneeberger

Maxine Seidel & Thomas Sumner

Feed the Needy

Kathy Alfred

In memory of Gene Alfred

Renee Cooperman

Sheldon Liebmann

In memory of Sylvia Brody and Jacob Landau

Steven York

In memory of Dora York

General Donations

Tami Finkbeiner

Aubri Lancaster

In appreciation of Shabbat Services

Isaac & Vivian Levy

Giving Tuesday Donation

Steven & Gail Altabef

Carol Rosado

Paul & Zoe Venhuizen

Library Books

Stacey A. Nadler & Ron Schneeberger

In memory of loving mother, wife, & Nannie Joan Nadler



Recent Donations

Memorial Donations

Sheldon Barasch

*In memory of Marsha Evans, Dorothy Barasch Weiss,
Edna Barasch, & Edie Gillis*

Jesse & Dale Charnick

In memory of Milton Charnick

Tami Finkbeiner

In memory of Ben Zimmerman

Steven & Lois Friedman

*In memory of Earl Ely Friedman &
Helen Blecher Katzman*

Harold Goldstein

In memory of Clell Goldstein

Stephen & Marla Grosslight

In memory of Betty & Stanley Evans

Gabe & Jill Katell

In memory of Leonard Salberg

Arnold Kaufman

In memory of Stanley Kassup

Keith & Lynne Kelly

In memory of Max E. Rabin

Glen & Debbie Knecht

In memory of Bobette "Bunny" Karoff

Sheldon Liebmann

In memory of George Liebmann

Mitchell & Lynn Salberg

In memory of Leonard Salberg

Daniel & Debra Schranze

In memory of David Schranze

Sandra Sussman

In memory of Edith Greenberg and Lewis Greene

Beverly Troop

In memory of Ruth Kaye

Program Donation—Tu Bishvat Hike Breakfast

Michele Paskow

Steve & Ruth Ann Rossman

Les & Daryl Sutton

Rabbi's Discretionary Fund

Emily & Kristopher Doepking

For Tu Bishvat Hike

Tami Finkbeiner

In memory of Ruth Freund

Ashley Gelfound

In Appreciation of Rabbi Michele

Harold Goldstein

In memory of Clell Goldstein

Catherine Holst

In memory of Joseph Bailey

Michael & Marilyn Hollander

*In memory of Elizabeth Turner and
in honor of Rabbi's kindness*

Glen & Debbie Knecht

In memory of Bobette "Bunny" Karoff

Roberta Lester

In memory of Dr. Michael Dunn

Michael & Merle Russ

In memory of Linda Mann

Les & Daryl Sutton

In memory of David Altabef

Loving husband of Jessica and brother of Steve

Tech/A.U. Fund

Shelah Harris

In memory of Sam Sonders

Cantor Michael & Merle Russ

In loving memory of Stuart Keimon and Rhoda Russ

Current Needs

Building & Property Improvement

Parking Lot Resurfacing, Striping, and Lighting
Security Fencing

Health & Safety

AED: Automated External Defibrillator

Legacy Giving

As you update your Will or Trust, we hope you will remember CBE as a beneficiary. President Les Sutton or Treasurer Ryan Richmond will be happy to work with you to help set this up. Make CBE's future part of your legacy, l'dor v'dor: from generation to generation.

Cemetery Program

It's not something we like to think about, but preparing for your own passing in advance ensures your peace of mind, and relieves loved ones of stressful decisions in a time of loss. Congregation B'nai Emet has partnered with Mount Sinai Memorial Park in an endowment program to help our members make pre-need arrangements for burial plots and other funeral concerns. Participation has financial benefits both for you and for CBE.

For more information, contact RuthAnn Rossman at rupee24601@gmail.com or (805) 581-3723. She will connect you with Josh Ryan, Advance Planning Representative at Mount Sinai, or one of his partners. Absolutely no obligation.

Observing Yahrzeits at CBE

A yahrzeit is the anniversary of a death. It is traditional to light a 24-hour memorial candle in your home, at sundown on the evening before the date of the yahrzeit.

Names of the remembered are read out at Shabbat services on the Friday night immediately preceding the yahrzeit date. Friends and family attend this service, and participate in the recitation of the Mourner's Kaddish. Many people also make a donation to the temple in honor of the remembered, as a mitzvah on behalf of a loved one who is no longer here to do so.

Those who have yahrzeits on file with the Temple office will receive reminders before the dates. We ask for your help in keeping this information current and complete. To check, change, or add to the current yahrzeit information on file, please contact the office.

Lewis Greene	3/1	Adar-I 28
Gerald Schned	3/1	Adar-I 28
Sanford Friedman	3/2	Adar-I 29
Esther Schned	3/4	Adar-II 1
Bennie Riff	3/5	Adar-II 2
Thomas Sumner	3/6	
Jean Greenberg	3/7	Adar-II 4
Sue Neugroschl	3/9	
Mary Hollander	3/16	Adar-II 13
Barbara Altabef	3/17	Adar-II 14
Donald Nadler	3/17	
Leo Plotkin	3/17	Adar-II 14
Max David Greenberg	3/18	Adar-II 15
Jacob Sweet	3/18	Adar-II 15
Flora Apelman Friedman	3/20	
Mary Hollander	3/20	
Marcia Grossman	3/21	Adar-II 18
Alex Sutton	3/22	
Joan Tratner	3/22	
Ida Pollack	3/23	
Meyer Siegel	3/24	Adar-II 21
Anna Freeman	3/26	Adar-II 23
Julia Sutton	3/26	
Emanuel "Manny" Singer	3/27	Adar-II 24
Shirley Bergmann	3/29	
Nessine Ribstein	3/30	
Sidney Ilowitz	4/1	
Mark Troop	4/1	
Leah Edelson	4/2	Nissan 1
Arnold Gillis	4/3	Nissan 2
Donald Nadler	4/3	Nissan 2
Annette Foster	4/4	
Aron Pichkhadze	4/4	Nissan 3
Morris Glassman	4/5	Nissan 4
Martin Judge	4/5	Nissan 4
Moses Strassburger	4/5	
Pinnie Firestein	4/6	Nissan 5

Jahrzeits

Lewis Greene	3/1	Adar-I 28	Arthur Lefton	4/7	Nissan 6
Gerald Schned	3/1	Adar-I 28	Marie Menke	4/7	Nissan 6
Sanford Friedman	3/2	Adar-I 29	Shannon Cricco	4/8	Nissan 7
Esther Schned	3/4	Adar-II 1	Oscar Keimon	4/10	Nissan 9
Bennie Riff	3/5	Adar-II 2	Victor Schatz	4/10	Nissan 9
Thomas Sumner	3/6		Harry Gordon	4/11	Nissan 10
Jean Greenberg	3/7	Adar-II 4	Joseph Kaufman	4/11	Nissan 10
Sue Neugroschl	3/9		Iris Lefton	4/11	Nissan 10
Mary Hollander	3/16	Adar-II 13	Agatha Orloff	4/11	Nissan 10
Barbara Altabef	3/17	Adar-II 14	Bernadine Paige	4/11	Nissan 10
Donald Nadler	3/17		Lillian Solomon	4/11	Nissan 10
Leo Plotkin	3/17	Adar-II 14	Sidney Friedman	4/12	Nissan 11
Max David Greenberg	3/18	Adar-II 15	Trudy Jackman	4/12	
Jacob Sweet	3/18	Adar-II 15	Gery Kaye	4/12	
Flora Apelman Friedman	3/20		Hillard Orloff	4/12	Nissan 11
Mary Hollander	3/20		Valerie Singh	4/12	Nissan 11
Marcia Grossman	3/21	Adar-II 18	Marvin Steinberg	4/12	Nissan 11
Alex Sutton	3/22		Irving Lamm	4/13	
Joan Tratner	3/22		Daniel Moses	4/14	Nissan 13
Ida Pollack	3/23		Sandra Patricia Bailess	4/15	Nissan 14
Meyer Siegel	3/24	Adar-II 21	Ira Berkowitz	4/15	
Anna Freeman	3/26	Adar-II 23	Rosie Hollander	4/15	Nissan 14
Julia Sutton	3/26		Daniel Small	4/15	
Emanuel "Manny" Singer	3/27	Adar-II 24	Fred Lowenschuss	4/16	Nissan 15
Shirley Bergmann	3/29		Shirley Oliver	4/16	Nissan 15
Nessine Ribstein	3/30		Bernie Edelson	4/17	Nissan 16
Sidney Ilowitz	4/1		Bernice Greenstein	4/17	
Mark Troop	4/1		Sheila Gurstein	4/17	
Leah Edelson	4/2	Nissan 1	Terry Hardin	4/17	Nissan 16
Arnold Gillis	4/3	Nissan 2	Janice Marder	4/17	Nissan 16
Donald Nadler	4/3	Nissan 2	Simon Mitchel	4/18	
Annette Foster	4/4		Gloria Rifkin	4/20	
Aron Pichkhadze	4/4	Nissan 3	Gail Lenore Shapiro	4/20	Nissan 19
Morris Glassman	4/5	Nissan 4	Rubin Barasch	4/21	Nissan 20
Martin Judge	4/5	Nissan 4	Samuel Zimmerman	4/21	Nissan 20
Moses Strassburger	4/5		Irwin Chessen	4/24	
Pinnie Firestein	4/6	Nissan 5	Morris Davis	4/24	Nissan 23

Renate Fried	4/24	Nissan 23
Rae Donin	4/26	Nissan 25
Trudy Gorelick	4/27	
Pearl Wohlner	4/27	Nissan 26
Joyce Alexman	4/28	Nissan 27
Lillian Katell	4/28	Nissan 27
Herman Yager	4/28	Nissan 27
Arthur Irving Korn	5/1	Nissan 30
David Miller	5/1	Nissan 30
Martin Mitchel	5/1	
Leslie Goldhammer	5/2	Iyar 1
Burton Borrok	5/3	Iyar 2
Ida Axelrod	5/4	Iyar 3
Helen Borden	5/4	Iyar 3
Helen Eichner	5/5	Iyar 4
Percy J. Frank	5/5	
Philip Goldstein	5/6	Iyar 5
Stanley Kubik	5/6	Iyar 5
Michael Theodorus Overdevest	5/6	
Phyllis Pass	5/6	Iyar 5
Addie S. Friedman	5/7	Iyar 6
Oliver Gottlieb	5/7	Iyar 6
Lewis Stone	5/7	
Al Chudler	5/8	Iyar 7
Rita Priest	5/8	Iyar 7
Maude Leibert	5/9	Iyar 8
Stanford Weinstein	5/9	Iyar 8
Miriam Mann	5/10	
Kate Shaw	5/10	Iyar 9
Louis Forman	5/11	
Marvin Cohen	5/12	
Angela Mann	5/12	
Sarah Davis	5/13	Iyar 12
Beverly Friedman	5/13	Iyar 12
William Rogen	5/13	Iyar 12
Rosa Zimmerman	5/13	Iyar 12
Martin Keimon	5/15	Iyar 14

Jay & Helen Frank Protas	5/15	
Tina Schultz	5/15	
David Tratner	5/15	
Robert Friedman	5/16	Iyar 15
Werner Hollander	5/16	
Tomas Kovar	5/16	Iyar 15
Jesse Price Orellana	5/17	Iyar 16
Lillian Knecht	5/18	
Dora Sharapan	5/18	Iyar 17
Natalie Futterman	5/22	Iyar 21
Bertha Liebmann	5/22	Iyar 21
Trevor Scharf	5/22	
Paul Nadich	5/23	Iyar 22
Bertram Marx	5/24	Iyar 23
Kim Rosado	5/24	
Richard Auerbach	5/25	Iyar 24
Harry Isadore Friedman	5/25	
Mary Brady	5/26	
Sarah Etz Chayim	5/26	Iyar 25
Sadie M. Frank	5/27	
Jack Irving Yaskiel	5/27	Iyar 26
Sarah Melnick	5/28	Iyar 27
Steven Schwartz	5/28	Iyar 27
Maureen Wessler	5/29	
Gussie Bloch	5/30	
James Bloch	5/30	
Bernice Hearn	5/30	
Ryan Murphy	5/30	Iyar 29
Penny Neugroschl	5/30	
Barbara Sumner	5/30	Iyar 29
Elaine Bienenfeld	5/31	Sivan 1
Rose Friedman	5/31	Sivan 1
Mildred Ertel Jessel	5/31	Sivan 1
Rita Seidel	5/31	Sivan 1



To purchase a leaf for our Tree of Life in memory of a loved one, please click [HERE](#).

Advertisement



Congregation Bnai Emet Advance Planning Representatives

Eric Frank
805-306-6410
efrank@mountsinaiparks.org

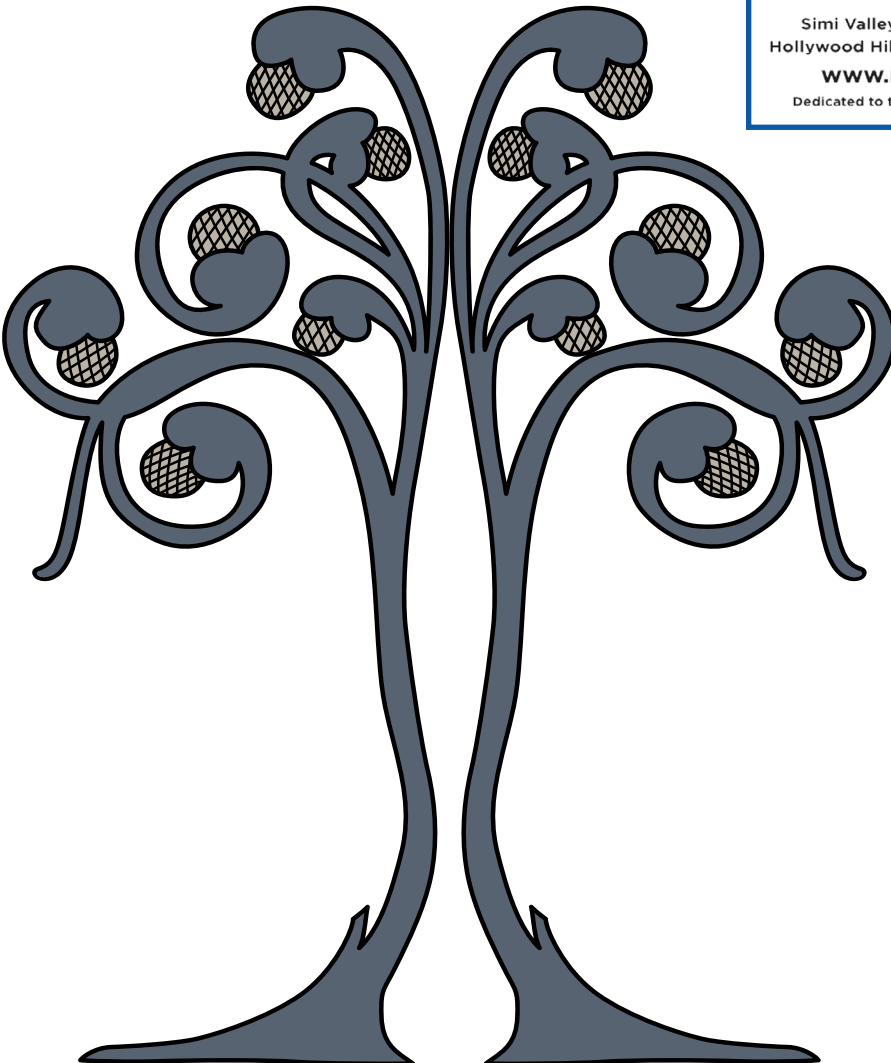
Josh T. Ryan
805-306-6411
jtryan@mountsinaiparks.org



Simi Valley FD 1745 6150 Mount Sinai Drive, Simi Valley CA 93063
Hollywood Hills FD 1010 5950 Forest Lawn Drive Los Angeles CA 90068

www.mountsinaiparks.org 800-600-0076

Dedicated to the entire Jewish community as a service of Sinai Temple of Los Angeles.





Accepting
Reservations!

Choosing the
right senior living
community can
seem difficult.

At Varenita,
we make it easy.



INTRODUCING VARENITA. INNOVATIVE AWARD-WINNING SENIOR LIVING.

At Varenita, we're dedicated to creating a rich and fulfilling lifestyle for today's seniors through a unique mix of innovation, state-of-the-art health and wellness programs, beautiful vibrant communities, and exceptional personalized care. This is Varenita. This is senior living ReEnvisioned.

CALL TO SCHEDULE YOUR PRIVATE TOUR.

Varenita of Simi Valley 805-601-8218

varenita.com



ReEnvision Senior Living