



# Chai Lites



Congregation B'nai Emet  
9 West Bonita Dr.  
Simi Valley, CA 93065  
Phone: 805-581-3723  
info@cbesimi.org  
www.cbesimi.org

Find us on social media!



www.facebook.com/cbesimi/



@cbesimi

Summer 2023

Sivan-Tamuz-Av-Elul 5783

Vol. 44, Issue 4

Dear Friends – Shalom Chaverim!

Do you remember Aaron, the High Priest, brother of and spokesman for Moses? According to Jewish tradition, Aaron was especially beloved by all Israel because he was known as a peacemaker. He helped people make peace with one another and to reconcile within their families. Our great sage Hillel taught, “Be one of the disciples of Aaron, loving peace and pursuing peace” (Avot 1:12). Despite his own family struggles and challenges, Aaron tried to bring people together and to bridge their differences.



This leads me to share a few things with you that I've done and learned about during this past year, all dealing with how we can better connect with people that we don't necessarily agree with! Last summer, I attended the [Pardes Institute](#) in Jerusalem, where I took various Jewish studies courses, such as “Stories We Wish Weren't There: Wrestling with Nasty Biblical Narratives”, and “Jewish Social Justice: Informing Our Religious and Communal Spaces”. I also learned about *Mahloket Matters*. *Mahloket* refers to a debate or a disagreement, specifically, a way that the Rabbis argued with one another in the Talmud. Disagreement was inherent, even encouraged, in these discussions, in order to examine a case or problem from as many different points of view as possible. But at the end of the day, they generally remained friends, and worked together as part of the same community.

Just last month, I participated in the [One America Summit](#) in Atlanta, where I had an opportunity to meet and work with Jewish, Christian and Muslim clergy, again learning how we can lead our communities to be open to working with one another in our very divided country. We heard from journalist Amanda Ripley, who wrote a book called *High Conflict: Why we get trapped and how we get out*. For me, this was a very exciting and stimulating conference! I look forward to implementing some of the things we learned, as we work on being able to share different viewpoints with one another without feeling threatened, getting angry, or being nasty. The bottom line is that it's not easy, but it is necessary for our society if we want to survive!

The Jewish Journal recently carried a cover article called, “[Can We Bring Civility Back?](#)”, reflecting on these same painful challenges of polarization, both here in the U.S. and coming to a head these past months with public demonstrations in Israel. We all seem to be asking, “How can we keep from spiraling out of control?” We each have our own personal views; we also have a responsibility to try to work together, whether in shul, in our community, or in our country. As of this writing, our government leaders have actually reached a bipartisan budget agreement. It's a timely reminder that sometimes compromise is the only way to work things out. Let's continue the conversations but most importantly, let's have them with kindness and respect for one another.

See you in shul! Shalom u'vrachah!  
Rabbi Michele Paskow

## Board & Affiliates

Michele Paskow <i>Rabbi</i>	Lois Friedman <i>Sisterhood President</i>
Michael Russ <i>Cantor</i>	Cindy Shilkoff <i>Temple Office Admin. Dir. of Communications</i>
Steve Rossman <i>President</i>	Lindy Schneider <i>Preschool Director &amp; Office Manager</i>
Max Patera <i>Executive VP</i>	Meridith Patera <i>Dir. Emerita of Jewish Education</i>
Steven Altabef <i>Treasurer</i>	Melissa Cohne <i>Religious Sch. Lead Teacher</i>
Debra Schranze <i>Secretary</i>	Jill Katell <i>Religious Sch. Teacher</i>
Alan Mann <i>Financial Secretary</i>	Suzanne Epstein <i>Communications Editor</i>
Tamara Patera <i>VP, Communications</i>	Bobbie Sion <i>Gift Shop Admin.</i>
Ruth Ann Rossman <i>VP, Fundraising</i>	Open Position <i>Choir Director</i>
Ron Mittelman <i>VP, Membership</i>	Ben Bahr Ken Bahr Michael Hollander Max Patera Steve Rossman <i>Tech Team</i>
Emily Doepking Ruth Ann Rossman <i>Co-VPs, Programs</i>	
Frieda Bahr <i>VP, Religious Education</i>	
Suzanne Mahler <i>VP, Social Action</i>	

Minutes of CBE board meetings are available upon request.

→ → → → → → →

**Turn your car into a Mitzvah—  
Donate it today!**

Free pick-up, tax write off—what's not to like?



**Call 855-500-RIDE or go to**  
careasy.org/nonprofit/Congregation-Bnai-Emet

← ← ← ← ← ← ←

## Contents

Rabbi's Greeting	1
President's Greeting	3
Upcoming Events	4
Women of CBE	6
Social Action	11
Jewish Education	11
Recent Events	13
Mazel Tov!	17
Recent Donations	18
Yahrzeits	20

Please send any temple mail or donations to:

Congregation B'nai Emet  
PO Box 878  
Simi Valley, CA 93062-0878

If you or someone you know would like to receive our weekly communications, go to our website (cbesimi.org), scroll to the bottom of any page, and look for the simple sign-up form. Alternatively, you can email [info@cbesimi.org](mailto:info@cbesimi.org) with your request. If you think you are already signed up, but are not receiving them every Wednesday morning, please check your Spam folder.

### Become a Chai Lites Sponsor!

A great way to promote your business while also supporting CBE! Contact the temple office at [info@cbesimi.org](mailto:info@cbesimi.org) for more information.

Ad Size	Single Issue	Full Year (4 Issues)
Business Card	\$45.00	\$100.00
1/4 page	\$65.00	\$165.00
1/2 page	\$95.00	\$265.00
Full page	\$130.00	\$420.00

# President's Greeting



Shalom Congregants,

As the government has called an end to the COVID mandates, it is nice to see most people's faces again. I realize COVID is not 100% over for everyone, but hopefully it is the beginning

of the end. This has reminded me that we are one people supporting ourselves, our families, our friends, and our future friends. I think we need this reminder that we are one people, different though we are. We need this in order to grow.

We are losing our Cantor Russ, but gaining an Emeritus Cantor Russ, with lifetime membership to the temple. He has decided to retire. When he told me I was shocked. I imagined him being CBE's Cantor long after my presidency. But of course, we will work through this as one people. We will form a committee and find a way forward.

Last year we had a fundraiser for Lights and Stripes. The parking lot was re-striped, and I am pleased to report that now the piers for the lights have (finally!) been poured. They will cure in 28 days and we can then install lights and call for a final inspection. Yahoo!!

The June 3 Rock 'n' Roll Havdalah promises to be a wonderful evening, with the opportunity to see one another, eat, enjoy live music, win silent auction items and raffle items, and welcome the new week. Don't be shy. Volunteer to help. Come enjoy yourselves!!! I am donating a day of handyman work for the auction, which beats volunteering for a dunk tank.

We will be bringing back the potluck dinner for Shabbat under the stars, June 23, July 28, and August 18. For further details, see the CBE Weekly News email on Wednesdays, or check the Calendar page on the website.

See you at temple!

Steve Rossman

President of the Board of CBE



*It's a dirty job, but someone's gotta do it! Steve Rossman supervises the pouring of the concrete that will hold the new light poles.*

# Upcoming Events

VIP Admission 6:00pm      Regular Admission 7:00pm



**Rock 'n' Roll Havdalah**  
Sat. June 3rd 2023 at CBE

Concert by DVR featuring Suzanne Mahler  
Sunset Havdalah ~ Silent Auction & Raffle  
Beverages for Purchase ~ Childcare available

**VIP Package: \$50/person**      **Adult Admission: \$20**  
 • Hors d'oeuvres      **Child Admission: \$10**  
 • 2 drinks  
 • T-shirt

VIP Tickets at [cbesimi.org](https://www.cbesimi.org). Regular Admission online or at the door.

Buy tickets here: <https://www.cbesimi.org/event-details/rock-n-roll-havdalah>

## Shabbat Under the Stars

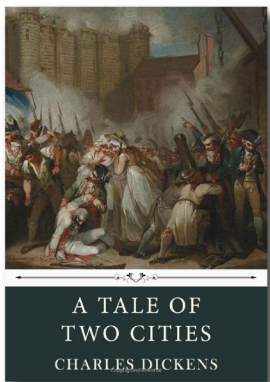
Friday June 23rd  
Friday July 28th  
Friday Aug. 18th

Potluck Dinner at 6:00pm  
Service at 7:00pm  
CBE Patio

Bring your folding chair and join us for this CBE summer tradition!


See [CBESimi.org](https://www.cbesimi.org) for potluck assignments.

## Books AND Bagels



Sun. June 25th, 9:30 am, on Zoom  
**A TALE OF TWO CITIES**  
by Charles Dickens

Charles Dickens' classic tale follows a Frenchman from Paris, where he is released from a long imprisonment in the Bastille, to London where he finally meets the now-grown daughter he never knew. This intimate family drama plays out against the sweep of history, as France descends into the Revolution and the Reign of Terror. Read the book that has captivated audiences for well over a century, has been adapted to every possible medium, and which continues to influence culture today.



Congregation  B'nai Emet

## Open House

Sun. July 30th 2023  
1:30-4:30 pm

Come see what makes CBE  
**YOUR Jewish community**  
and join our family of families!



To join Books and Bagels, email Barbara Poehls at [bbpoehls@gmail.com](mailto:bbpoehls@gmail.com)

# Upcoming Events

## Shabbat Services

Fri. 6/2	7:00 pm	Multi-Access Service	Teacher appreciation and Religious School Graduation
Fri. 6/9	7:00 pm	Shabbat Service on Zoom	
Sat. 6/10	4:30 pm	Multi-Access Torah Service	Bat Mitzvah of Vanessa Cohne
Fri. 6/16	7:00 pm	Multi-Access Service	
Fri. 6/23	6:00 pm	Multi-Access Service	Shabbat Under the Stars
Fri. 6/30	7:00 pm	Shabbat Service on Zoom	
Fri. 7/7	7:00 pm	Multi-Access Service	
Fri. 7/14	7:00 pm	Shabbat Service on Zoom	
Sat. 7/15	10:00 am	In-Person Torah Service	Shabbat Olé! Lunch 'n' Learn with Cantor Pablo Duek
Join us for a Shabbat morning service led by Cantor Pablo Duek, followed by a light lunch. Cantor Pablo will tell us about Jewish life in Argentina, where he was born and raised.			
Fri. 7/21	7:00 pm	Multi-Access Service	
Fri. 7/28	6:00 pm	Multi-Access Service	Shabbat Under the Stars
Fri. 8/4	7:00 pm	Multi-Access Service	Israel Update with Miko Sion: What is the Proposed Judicial Reform All About?
Learn and understand what the big debates and high emotions are all about in Israel. Miko has been following and researching the discussions on both sides and will give us an overview.			
Fri. 8/11	7:00 pm	Shabbat Service on Zoom	
Fri. 8/18	6:00 pm	Multi-Access Service	Shabbat Under the Stars
Fri. 8/25	7:00 pm	Shabbat Service on Zoom	



## Save the Dates: High Holy Days Services 5784/2023

More details to come—watch the CBE Weekly News email and [cbesimi.org](http://cbesimi.org).



### Friday, September 15th

Erev Rosh Hashanah Service 7:00 pm

### Saturday, September 16th

Rosh Hashanah Morning Service 10:00 am

Tashlich 4:00 pm

### Sunday, September 24th

Erev Yom Kippur Kol Nidre Service 7:00 pm

### Monday, September 25th

Yom Kippur Morning Service 10:00 am

Afternoon Discussions TBD

Minchah, Yizkor, & Nei'lah 4:30 pm

## Sisterhood Happenings

Welcome to the 2023-24 slate of officers of the Women of CBE! I am Lois Friedman, your new Sisterhood President. Our fabulous lineup of officers this year are listed at right, along with our amazing committee chairs and members, some new and some continuing. Thank you to each and every one of you for being a major part of our group.

I am relatively new to the WCBE board and have only held one previous board position (as Executive VP last year). My husband Steve Friedman and I have been CBE members for nearly 20 years, and I have served on the committees for e-scrip and Ralph's community contributions, as well as doing the donor computations for gift card purchases.

As a first-time president of anything, I am striving to get to know more about what WCBE does, and how we participate in Women Of Reform Judaism (WRJ) and its programs. It's a lot to learn. I am excited to have experienced past Presidents Meridith Patera and Ruth Ann Rossman, as well as other long-time board members to help me along.

Our upcoming programs include Game Night, Girls' Night Out, our annual Picnic in the Park, a donor event, a membership event, holiday-related events, and more. As our new Programs VPs get the year's calendar together, we will keep you in the know. Check the CBE weekly emails and the website for new programs.

In the last couple of months, we made Hamantaschen at Jill's for Purim, elected a new board, had a lovely Board Installation with fabulous homemade Passover desserts, and just this last meeting filled 60 bags with essentials for the unhoused, to be distributed by CBE VP of Social Action Suzanne Mahler.

I look forward to meeting all Sisterhood members and getting to know each of you. I want to encourage you to participate. We don't ask for a lot of your time, but we want your input, new ideas, and most of all, your participation. I want our group to be interesting, relevant, and of course fun! After all we are a sisterhood!

In sisterhood,  
Lois Friedman  
President, WCBE

## 2023-2024

### WCBE Board & Committee Chairs

**Lois Friedman**  
*President*

**Jill Katell**  
*Executive VP*

**Meridith Patera**  
*Treasurer*

**Cathy Holst**  
*Secretary*

**Ronnye Sacks**

**Laura Kritzer**

**Amy Tellio**  
*Co-VPs of Fundraising*

**Cheryl Hirsh**

**Cindy Shilkoff**

**Kathy Smith**  
*Co-VPs of Membership*

**Alice Fiducia**

**Jackie Kovar**

**Rhonda Nadler**  
*Co-VPs of Programs*

**Meridith Patera**  
*Donor Chair*

**Bobbie Sion**  
*Gift Cards & Gift Shop*

**Cheryl Hirsch**  
*Invitations*


**Rhonda Nadler**  
*Oneg Chair*

**Fredyce Holland**  
*Sunshine*

**Lynne Kelly**  
*Tribute Cards*

## Upcoming WCBE Events

WOMEN OF CBE

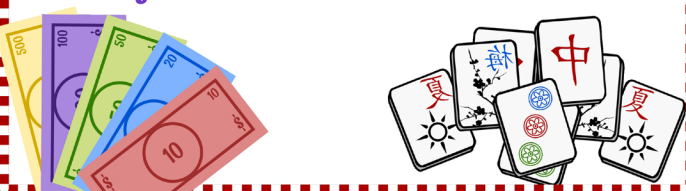


### Game Night

June 13th 2023 ~ 7:00pm  
at the home of Jill Katell

Join us for an evening of fun and games!  
Bring a friend and a game to share!

RSVP on the CBE website  
by June 12th to receive the address



WOMEN OF CBE

### Girls' Night Out

Tues. July 11th 2023  
6:30pm

Ali Baba's Cafe  
1464 Madera Rd  
Simi Valley, CA 93065



All women are invited  
to enjoy an evening of  
Mediterranean cuisine.  
Bring a friend!

RSVP by July 10th  
at [CBESimi.org](https://cbesimi.org)



WOMEN OF CBE

### Picnic in the Park

Tues. Aug 8th, 2023  
6:30 pm

Lemon Park  
(AKA Rancho Tapo Park)  
3700 Avenida Simi

Bring a folding chair and a picnic  
dinner for a summer evening al  
fresco! All women welcome!

RSVP at [CBESimi.org](https://cbesimi.org)  
by Aug. 7th



WOMEN OF CBE

### Hanukkah Boutique

Sun. Oct. 29th  
9:00 am - 3:00 pm  
at CBE

Vendor registration now open at  
<https://cbesimi.org/support-the-sisterhood>  
#hanukkah-boutique



Did you know? You can submit oneq sponsorship donations online at <https://www.cbesimi.org/support-the-sisterhood>

If you prefer the post, please send Sisterhood mail & donations to:  
Women of CBE, c/o Meridith Patera  
15050-C Campus Park Drive  
Moorpark, CA 93021

## Recent WCBE Events: Hamantaschen Bake



*Above: The Women of CBE gathered in early March at the home of Jill Katell to learn the fine art of making hamantaschen from the Cookie Lady herself, Tami Plotkin.*

*Left: Cathy Holst with the tasty results!*



# Women of CBE

## Recent WCBE Events: Women of Reform Judaism Pacific District Convention Seattle, March 2023



Above: Meridith Patera reconnects with former CBE member Sandy Gatlin. The Gatlins now live in Arizona.

Below: Delegates to the convention and then-Co-Presidents of WCBE Meridith Patera and Ruth Ann Rossman.



### Simi House of Judaica

Large selection, great variety ~ gifts & supplies for all occasions



- Jewelry
- Greeting cards
- Personalized kippot
- Bar/Bat Mitzvah registries
- Invitations by special order
- Gift cards for Amazon, gas stations, & many more!

Located at  
Congregation B'nai Emet  
9 W. Bonita Dr.  
Simi Valley, 93065

Call (805) 581-3723  
for hours and more information

### Tribute Cards from Women of CBE

Cards for all occasions!  
Prices from \$3

Your purchase supports WCBE and  
the Women of Reform Judaism.

Go to [www.cbesimi.org/support-the-sisterhood](http://www.cbesimi.org/support-the-sisterhood)  
to see all available card designs and additional  
details. Contact Lynne Kelly at  
[lkelmom@aol.com](mailto:lkelmom@aol.com) with any questions.

LAURIE

## Recent WCBE Events: New Board Installation



Above: The passing of the torch (so to speak) from Co-Presidents Ruth Ann Rossman and Meridith Patera to new President Lois Friedman.



Above left: WCBE Board President Lois Friedman takes the helm!

Above right: Rabbi Michele displays the WRJ award for Special Service.

## Social Action

### Feed the Needy

Social Action has been consistently participating in the Feed the Needy program on the 4th Saturday of each month, at the United Methodist Church. Members have been donating their time and resources by providing individually wrapped desserts, performing food preparation from scratch, doing dining hall set up, and both dining hall & kitchen clean up. In 2023 we have seen a rise in demand for meals from both single people and families.

### Monthly Mitzvah Collections

So far this year, we have completed several successful Mitzvah collections, ranging from household items donated to the Alpine Center, to replenishing the food pantry at the Samaritan Center. Recently, Social Action joined forces with our Women of CBE Sisterhood to fill bags of necessities for those in our community who are unhoused. More than 60 bags were distributed, and additional supplies are still being collected for future distribution.

### March Blood Drive

Last March, we held a successful blood drive through Vitalant Blood Services. We collected enough to help more than 30 patients. Our next blood drive is scheduled for Thursday June 22nd.

Suzanne Mahler  
VP, Social Action



*Feed the Needy selfie!  
Suzanne Mahler and the  
May volunteers.*

## Jewish Education

### Upcoming Bat Mitzvah: Vanessa Cohne

Vanessa Cohne, daughter of Kyle and Melissa Cohne, is in the 6th Grade at Township Elementary School where her favorite subjects are science, math, and history. Outside of school, her interests include drawing, painting, and other arts. She also enjoys playing video games.



The Cohne family have been members of CBE since 2022, and Vanessa began her Jewish education at Congregation B'nai Emet that year as well. She plans to continue her involvement in Jewish life post-Bat Mitzvah by continuing to celebrate Jewish holidays with her family.

For Vanessa, the best part of preparing for her Bat Mitzvah was getting to know Rabbi Michele better and becoming more comfortable at temple. She would like to thank Rabbi Michele, Meridith Patera, her Religious School teachers from Shomrei Torah Synagogue in West Hills, as well as her parents and extended family for all of their help and support in reaching this special day.

From Vanessa:

Dear Friends,

I have selected the Israel Guide Dog Center for my Mitzvah project, and would be grateful if you would consider making a gift. My goal is to raise \$3,000.00, but I can't do it without your help! Please join me in raising money for a great cause by sponsoring my campaign. Just click on this link:

<https://igdc.akaraisin.com/ui/mitzvah/p/90641ee4981b4409947bf743f4117994?abcd=20573070&TV=1>

Thank you in advance for your generosity!

## Judaica High School Confirmation

The students of the Judaica High School program finally got to celebrate an in-person confirmation service, after years of disruption by the pandemic. We are all so proud of these young scholars, who have invested their time deep-diving into Jewish history and culture with teacher Meridith Patera. Mazel tov!



*Above: Judaica High School teacher Meridith Patera with (from left) students Ryan Cohne (Class of 2025), Joseph Davidhoff (Class of 2021), Maylee Doepking (Class of 2023), and Ian Bahr (Class of 2023).*



*Left: Madison Crawford (Class of 2020) was honored in absentia—she's already off at college!*

### Chug Ivrit Summer Workshop

CHUG=Club Hebrew fUn and Games!  
"Chug" is a Hebrew word for an elective or workshop. Rabbi Michele is available to work with any students who want to join her for "office hours" over the summer to practice their Hebrew reading and work on their prayers.

- Tuesdays 4-5pm for students ages 6-10
- Thursdays 4-5pm for older students

Please speak with Rabbi directly to RSVP

# Recent Events

## Theme Shabbats

The indefatigable Ruth Ann Rossman, Oneg Chair Extraordinaire Rhonda Nadler, and the rest of the Women of CBE worked their magic to make recent in-person Shabbat services extra festive. Shown below: Shamrock Shabbat and Shabbat Cinco de Mayo.



# Recent Events



Left: In April, Rabbi Michele organized a trip to the Reagan Library to see the exhibition Auschwitz: Not long ago. Not far away. After this moving and difficult experience, the group repaired to Viva La Pasta to recover with food and discussion.



Much thanks to VP of Membership Ron Mittelman, VP of Social Action Suzanne Mahler, and President Steve Rossman (above), as well as Secretary Debra Schranze and unofficial goodwill ambassador Sandy Miller (right) for helping with CBE's presence at the Simi Valley Street Fair. Also, be sure to ask Max Patera about how he won his mom a new toilet!



Above: Edith Bahr engages in her new favorite pastime of flying a "Yiddish-kite" at the Lag B'Omer Celebration.

Opposite: At the same celebration of this slightly wacky holiday, the associated tradition of archery had everyone taking aim, including littlest archer Spencer Mahler (far right).

Meanwhile, Glen Knecht works his grill skills (opposite, bottom left) and the Cohne family (opposite, bottom right) stays in the shade—and well out of range!

# Recent Events

## Lag B'Omer Celebration



# Recent Events

## Super Simcha Shabbat!

There was abundant kvelling at a recent Shabbat service, with the confirmation of the Judaica High Students, an aufruf (wedding blessing), and a baby-naming all on the same night. As if that weren't enough cause for celebration, there was also a cheesecake and ice cream feast for oneg, in celebration of Shavuot. Mazel tov and best wishes to all!



*Left: The confirmation students with their proud teacher and clergy!*

*Below: The soon-to-be married couple received a blessing from Rabbi Michele.*



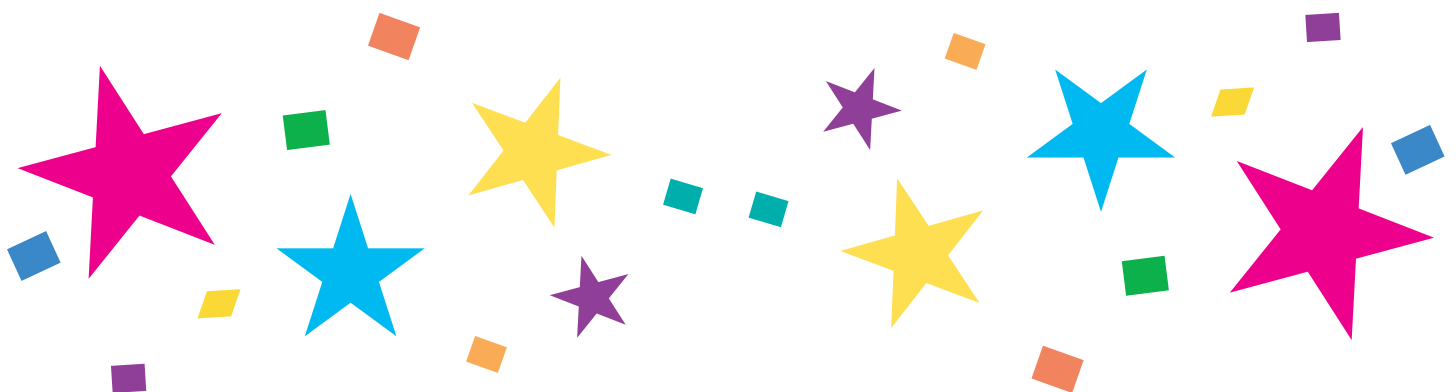
*Above: Wesley Hollander, son of Kelsey and Andrew and grandson of Michael & Marilyn Hollander received his Hebrew name, plus a beautiful serenade by Grandma Marilyn and Aunt Erin (right) who accompanied the duet on her ukulele.*





## Birthdays

Dean Adams	6/1		Mel Edelson	7/15	
Kaden Lindeen	6/1	18	Stacy Nath	7/21	
Peppi Lamm	6/2	*101*	Ryan Cohne	7/24	15
Benjamin Bahr	6/5	12	Luis Fuentes	7/25	10
Arielle Sofer	6/5	14	Israel Fuentes	7/28	6
Joshua Sofer	6/6		Connie Davidhoff	8/3	
Gary Loeb	6/11		Louise Edelson	8/6	
Wendy Niesen	6/11		Ryan Richmond	8/7	
Daniel Brandler	6/15		Lynne Kelly	8/9	
Rachel Utiger	6/18		Eliana Plotkin	8/9	
Eric Weiner	6/23		Steven Friedman	8/11	
Sanford M. Miller	6/24		Dr. Harry Schned	8/11	
Michael Hollander	6/27		Melissa Shilkoff	8/11	
Barbara Poehls	6/29		Max Patera	8/13	
Gail Mittelman	6/30		Phyllis Slade	8/14	
Debra Schranze	7/4		Larry Shilkoff	8/15	
Dr. Jeffrey Plotkin	7/9		Benni Freund	8/18	
Bob Poehls	7/9		Jill Katell	8/21	
Karen Ribstein	7/9		Frieda Bahr	8/26	
Erica Weiner	7/10		Patricia Schned	8/29	
Cody Eglick	7/12	8			



## Mazel Tov!

### Anniversaries

Amy and Jeffry Tellio	6/3	33rd
Steven and Gail Altabef	6/4	40th
Judy & Eliot Epstein	6/8	43rd
Mel and Louise Edelson	6/9	61st
Renee and David Kieselbach	6/10	33rd
Ken and Suzanne Epstein	6/14	59th
Dr. Ronald Forster & Dr. Chen Mu-Forster	6/18	28th
Cantor Michael & Merle Russ	6/22	54th
Steven & Lois Friedman	6/24	44th
David & Gabrielle Shabah	6/24	5th
Glen & Debbie Knecht	6/25	34th
Cynthia & Stacy Nath	6/25	6th
Hazzan Dr. Evlyn Gould & Mr. Henry Ponedel	6/26	35th
David & Laura Kritzer	6/26	24th
Ryan & Natalie Richmond	6/26	24th
Evan & Connie Davidhoff	6/28	20th
Joshua & Shirley Sofer	7/1	16th
Jonathan & Chandra Lapidés	7/3	15th
Burton & Arlene Sedlak	7/4	63rd
Bob & Barbara Poehls	7/17	40th
Paul & Zoe Venhuizen	8/6	42nd
Robert & Lana Fricke	8/21	65th
Jeffrey & Tamara Plotkin	8/26	44th
Isaac & Vivian Levy	8/27	19th

## Recent Donations

### Building Improvement Fund

Shelah Harris  
*In memory of Sylvia Rosenzweig*  
Women of CBE  
*For Parking Lot Lighting*

### Electronic Transaction Fee Donation

Honey Amado  
Steve & Lois Friedman  
Ashley Gelfound  
Gabe & Jill Katell  
Jonathan & Chandra Lapidés  
Isaac Levy  
Gary Loeb  
Alan Mann  
Brian Marcus  
Rhonda Nadler  
Michele Paskow  
Ryan & Natalie Richmond  
Carol Rosado  
Steve & Ruth Ann Rossman  
Dan & Debra Schranze  
Kathy Smith  
Paul & Zoe Venhuizen

### Feed the Needy

Dr. Ken & Suzanne Epstein  
*In memory of Rosy Muhlfelder*  
Sheldon Liebmann  
*In memory of Joyce Alexman*

### General Fund

Steve & Gail Altabef  
AmazonSmile  
*Charity of Choice*  
Alice Fiducia  
Catherine Holst  
Donald Loundy  
*In memory of Sandra Loundy*

# Recent Donations

---

Brian Marcus

Max & Tamara Patera

Ronnye Sacks

## Memorial Fund

Susan Cohen

*In memory of Ricki Blustein*

Mel & Louise Edelson

*In memory of Albert Edelson*

Tami Finkbeiner

*In memory of Bennie Riff,  
Hillard & Agatha Orloff,  
and Rosa & Sam Zimmerman*

John & Ilene Judge

*In memory of Martin Judge  
and Morris Glassman*

Alan Mann

*In memory of Miriam Mann*

Cantor Michael & Merle Russ

*In memory of Oscar Keimon*

Beverly Troop

*In memory of Mark Troop,  
Gery Kaye, and Sheila Gurstein*

## Programs Fund

Bert & Marla Goldberg

## Rabbi's Discretionary Fund

Honey Amato

*In honor of Rabbi & the "Minyanaires"*

Lisa & Norman Berezowsky

Julie Bienenfeld & Michael Mutal

*In memory of Elaine Bienenfeld*

Susan Cohen

*In memory of Roslyn Dallek*

Alan & Susan Flaschner

*Monthly act of Charity*

Ashley Gelfound

*In appreciation of services*

Cheryl & David Hirsch

*In appreciation of the Women of CBE  
New Board Installation*

Michael & Marilyn Hollander

*In memory of Werner Hollander*

Gabe & Jill Katell

*In appreciation of their grandson's  
Baby Naming*

Guenter & Gayle Menke

*In memory of Marie Menke*

## Religious School Fund

Susan & Neal Epstein

*In memory of Trevor Grant Scharf*

Guenter & Gayle Menke

*In memory of  
Darrius Eugene Simpson-Menke*

Rosalie Roder

*In memory of Zohara Lily Shabah*

Debbie & Dan Schranze

*In memory of Robert & Beverly Friedman*

Michelle Scharf

*In memory of Trevor Grant Scharf*

## Tribute Donation

Cantor Michael & Merle Russ

*In honor of Rabbi Michele's birthday*

## Current Needs

### Building & Property Improvement

Additional outdoor lighting on the CBE property

Security Fencing around the perimeter

### Health & Safety

AED: Automated External Defibrillator



To purchase a leaf for our Tree of Life in memory of a loved one, go to <https://www.cbeseimi.org/product-page/tree-of-life-leaf>

## Cemetery Program

It's not something we like to think about, but preparing for your own passing in advance ensures your peace of mind, and relieves loved ones of stressful decisions in a time of loss. Congregation B'nai Emet has partnered with Mount Sinai Memorial Park in an endowment program to help our members make pre-need arrangements for burial plots and other funeral concerns. Participation has financial benefits both for you and for CBE.

For more information, contact Ruth Ann Rossman at rupee24601@gmail.com or (805) 581-3723. She will connect you with Josh Ryan, Advance Planning Representative at Mount Sinai, or one of his partners. Absolutely no obligation.

### Observing Yahrzeits at CBE

A yahrzeit is the anniversary of a death. It is traditional to light a 24-hour memorial candle in your home, at sundown on the evening before the date of the yahrzeit.

Names of the remembered are read out at Shabbat services on the Friday night immediately preceding the yahrzeit date. Friends and family attend this service, and participate in the recitation of the Mourner's Kaddish. Many people also make a donation to the temple in honor of the remembered, as a mitzvah on behalf of a loved one who is no longer here to do so.

Those who have yahrzeits on file with the Temple office will receive reminders before the dates. We ask for your help in keeping this information current and complete. To add to the current yahrzeit information on file, go to <https://www.cbesimi.org/yahrzeit-reminders>. To check or change same, please contact the office.

Silia Minor	6/1	
Cantor Herman Russ	6/1	Sivan 12
Irene Heimann	6/2	Sivan 13
Lori Alfred	6/3	
Adrienne Weinstein	6/3	Sivan 14
Marlene Bloch	6/4	
Dina Pichkhadze	6/4	Sivan 15
Gilbert Roethler	6/4	Sivan 15
Rose Roethler	6/4	Sivan 15
Victor Weiner	6/5	Sivan 16
Herb Baron	6/6	Sivan 17
Corinne Elenor Elhai	6/6	Sivan 17
Angela Berns	6/8	
Martin Bordo	6/8	Sivan 19
Julius Fleischmann	6/8	Sivan 19
Julius Schwartz	6/9	Sivan 20
Samuel Bressler	6/10	Sivan 21
David Schneider	6/11	Sivan 22
David Heimann	6/12	Sivan 23
Radboud Venhuizen	6/12	Sivan 23
David Solomon Becker	6/13	
Fred Sacks	6/13	
Manuel Lieber	6/14	Sivan 25
Susan Lowenschuss	6/14	Sivan 25
Rose Firestein	6/15	Sivan 26
Max LeVine	6/15	Sivan 26
Morris Pass	6/15	Sivan 26
Ronnie Tabak	6/15	Sivan 26
Benny Zaltzman	6/15	Sivan 26

# *Yahrzeits*

Sherwood Schweitzer	6/16	Sivan 27	Sharon Mahler	7/1	Tammuz 12
George Lazarus	6/17	Sivan 28	Anne Skibben	7/1	Tammuz 12
Sheldon Raab	6/17	Sivan 28	Florence Cricco	7/2	Tammuz 13
Josef Bromberger	6/20		Theodore Karoff	7/2	
Milton Grossman	6/20	Tammuz 1	Stanley Loeb	7/2	Tammuz 13
Marion Pfefer	6/20	Tammuz 1	Essena Schweitzer	7/3	Tammuz 14
Joe Soble	6/20		Sunny Chudler	7/4	Tammuz 15
Dena Daniella Yaskiel	6/20	Tammuz 1	Steven Borrok	7/5	Tammuz 16
Leon Brody	6/21	Tammuz 2	Harry Gould	7/6	Tammuz 17
Marc Chessen	6/21		Bernice Levy	7/6	Tammuz 17
Miriam Korn	6/21	Tammuz 2	Earl Rosado	7/6	
Lucille Blecher Ginsberg	6/22	Tammuz 3	Vera Glazer	7/7	Tammuz 18
Florence Mann	6/22		Shari Schultz	7/7	
Leo Brady	6/23		Irving Marder	7/8	Tammuz 19
Gustav Heimann	6/23	Tammuz 4	Karl Menke	7/8	Tammuz 19
Claire Klugman	6/23	Tammuz 4	Irys Schneider	7/8	Tammuz 19
Abe Richter	6/23	Tammuz 4	Michael Liebmann	7/9	Tammuz 20
Gladys Rosenberg	6/24	Tammuz 5	Eugene Rosenberg	7/10	Tammuz 21
Hillary Scolari	6/24		James Steffens	7/11	Tammuz 22
Alan Tolchin	6/24	Tammuz 5	Arthur Barasch	7/12	Tammuz 23
Shirley Borrok	6/26	Tammuz 7	Leo Huttas	7/12	Tammuz 23
Leatrice Goldstein	6/26	Tammuz 7	Aranka Deutch Rosenberg	7/12	Tammuz 23
Irwin Katz	6/27	Tammuz 8	Lenore Schneeberger	7/12	
David Evans	6/28	Tammuz 9	Irene Goldbloom	7/13	Tammuz 24
Frank Mutal	6/28	Tammuz 9	John Levin	7/13	Tammuz 24
Charnette Shilling	6/29	Tammuz 10	Joe Orloff	7/13	
Holly York	6/29	Tammuz 10	Bessie Keimon	7/14	Tammuz 25
Lee Lieber	6/30	Tammuz 11	Marvin Sussman	7/14	Tammuz 25
Lawrence Chusid	7/1	Tammuz 12			

# *Jahrzeits*

Edwin Kaufman	7/15	Tammuz 26
Barbara Primus	7/15	
Cecilia Schwartz	7/15	Tammuz 26
Harry Goldberg	7/16	Tammuz 27
Ruth Sacks	7/16	
Donna Bailey	7/17	Tammuz 28
Earl Rosado	7/17	Tammuz 28, 5783
Yetta Schachter	7/17	Tammuz 28
Debby Odens	7/18	Tammuz 29
Glen Rosado	7/18	
Frieda Davis	7/19	Av 1
Irwin Katzman	7/19	Av 1
Andrew Marder	7/19	Av 1
Mark Niesen	7/19	Av 1
Ruetta Orloff	7/19	
Richard Schneeberger	7/20	
Gertrude Bressler	7/22	Av 4
Shary Farkas	7/23	Av 5
Carol Paskow	7/23	Av 5
Joseph Freeman	7/24	Av 6
Ruth C. Frolove	7/24	Av 6
Sam Levine	7/24	
Ruth Dacks	7/25	Av 7
Medill Bienenfeld	7/26	Av 8
Carl Oliver	7/26	Av 8
Abraham Pichkhadze	7/26	Av 8
Dirk Utiger	7/26	
Corrie Venhuizen	7/26	Av 8

Melvin Bernstein	7/27	Av 9
Walter Brandler	7/28	Av 10
Harold Mann	7/28	
Richard Fineberg	7/31	Av 13
Norman Wohlner	7/31	Av 13
Morris Futterman	8/1	Av 14
Florence Neugroschl	8/1	
Marcia Rifkin	8/2	
Abraham Jacob Frank	8/3	
Sophie Pryor	8/3	Av 16
Dale R. Utiger	8/4	
Jack Apelbaum	8/5	Av 18
Goldine Elston	8/5	Av 18
Renee Mofchum	8/5	Av 18
Irving Pfefer	8/6	Av 19
Daniel Scop	8/6	Av 19
Donald Marx	8/7	Av 20
Sylvia Le Vine	8/8	
Irwin Foster	8/11	
Murry Fromer	8/11	Av 24
Nellie Melgar	8/12	
Herman Scharf	8/12	
Estelle Breiter	8/13	Av 26
Lou Gotenstein	8/13	Av 26
Harry Altabef	8/14	Av 27
Anne Hirschorn	8/14	Av 27
Alissa Taff	8/14	
Katherine Diana Mutal	8/15	Av 28
Sonny Rivera	8/15	

# Yahrzeits

Art Schultz	8/15	
Eric Tepfer	8/17	Av 30
Laura Bloch	8/18	
Dianne Marks	8/18	
Frances Shilkoff	8/18	Elul 1
Alex Marcus	8/19	
Victor Ringer	8/19	Elul 2
Brett Tabak	8/19	Elul 2
Barbara Ann Kitt	8/21	Elul 4
David Breiter	8/22	Elul 5
Jeffrey G. Gorelick	8/22	
Sylvan Greenwald	8/22	Elul 5
Harry Shaw	8/22	Elul 5
Howard Vine	8/22	Elul 5
Riva Goldenberg	8/23	Elul 6
Irene Goldhammer	8/23	Elul 6
Philip Goodman	8/23	Elul 6
Joseph Mittelman	8/23	Elul 6
David Glass	8/24	Elul 7
Ann Glassman Cohen	8/26	Elul 9
Cima Goldenberg	8/26	Elul 9
Isaac Sion	8/26	Elul 9
Ruth Kracow	8/27	
Fay Wolfsky Sweet	8/27	Elul 10
Winfred Jackman	8/28	
Paula Sion	8/31	Elul 14
Marian Zak	8/31	Elul 14

## Advertisement

**YOUR FAMILY IS PRECIOUS TO YOU**

Plan ahead with a gift of love for those you care about most.

**Congregation Bnai Emet Advance Planning Representatives**

Eric Frank  
805-306-6410  
efrank@mountsinaiparks.org

Josh T. Ryan  
805-306-6411  
jtryan@mountsinaiparks.org



**MEMORIAL PARKS AND MORTUARIES**

Simi Valley FD 1745 6150 Mount Sinai Drive, Simi Valley CA 93063  
Hollywood Hills FD 1010 5950 Forest Lawn Drive Los Angeles CA 90068

[www.mountsinaiparks.org](http://www.mountsinaiparks.org) 800-600-0076

Dedicated to the entire Jewish community as a service of Sinai Temple of Los Angeles.



*The Chai Lites Newsletter is published quarterly by*

