

9 West Bonita Drive
Simi Valley, CA 93065

Phone: 805-581-3723

Fax: 805-581-3160

July-August, 2017
Tammuz-Av-Elul, 5777

Volume 38, Issue 5

Congregation B'nai Emet

C.B.E. Chai Lites



Rabbi's Message

The Light is on and we're home ... come on in!

Dear Friends:

One of my favorite Jewish jokes goes as follows:

When I was young, I asked my father, "If you don't believe in God, why do you go to synagogue so regularly?" My father answered, "Jews go to synagogue for all kinds of reasons. My friend Garfinkle, who is orthodox, goes to talk to God. I go to talk to Garfinkle."

Whatever your reason is for coming to *shul*, belonging to the synagogue and supporting the Jewish community is important, meaningful and rewarding.

Jewish life is both home and community based. An important aspect of Jewish living is daily observance or connection in some way – from reading a Jewish book (study), to saying a prayer (personal devotion), to keeping a part of kosher (spiritual connection), to acting ethically with caring, compassion and kindness (*chesed*), and more. Belonging to the synagogue connects you to the Jewish community and your faith and provides an extended family. It is important to be a synagogue member to help support the Jewish community. I've noticed that actively participating in Temple life deeply enriches the lives of those involved in so many ways. Our CBE community is especially warm, welcoming, and *heimish*, as everyone who has visited or joined us can agree!

We all have friends and relatives who do not belong. I would like to encourage you to invite them to come and join us. Like the joke expresses, they can come for social or religious events – what is important is that they join to show their support for the Jewish community and Jewish education and to know that the Temple (and Rabbi) are there to be of service.

Our Jewish tradition teaches us that we are part of a family, the House of Israel. We are taught to help one another and assist each other. In our day, when so many people call the Temple for guidance, for help, for a family event, everyone should belong to a synagogue and be counted as part of the family.

We will have services and activities throughout the summer. This past Shabbat was our first Shabbat Under the Stars of the summer – everyone enjoyed the delicious food, schmoozing, the beautiful children, and singing the prayers on our patio overlooking the beautiful Simi hills and valley. It was relaxing, uplifting and joyous! Bring your friends, make new friends! You will be filled with contentment and have a sense of spirituality and meaning.

Put "Friday night @ CBE" on your calendar!

Lehitraot – להתראות

See you in Shul!

Rabbi Michele Paskow

mailto:Michmich805@gmail.com

OPPORTUNITIES for Involvement:

ATTEND Shabbat services

ESTABLISH a spiritual and emotional bond
with Judaism and the Jewish people.

ENRICH your knowledge with Rabbi Michele, guest speakers and
adult education

PROMOTE AND SUPPORT Jewish life in Simi and Moorpark
through:

*Sisterhood, Men's Club, Pre/ Religious School, Havurah,
Religious and Community Services.*



Board of Directors and Affiliates Bulletin Bytes

Rabbi
Michele Paskow
Cantor
Michael Russ
President
Ryan Richmond
Executive Vice President
Debbie Knecht
Secretary
Daryl Sutton
Treasurer
Les Sutton
VP Membership
Frieda Bahr
VP Fundraising
Michael Mutal
Co-VPs Programs
Alan Mann and Sanford Miller
VP Havurah
Jill Katell
VP Religious School
Open
VP Social Action
Open
Financial Secretary
Geri Brandler
Sisterhood President
RuthAnn Rossman
Men's Club President
Glen Knecht
Temple Administrative Assistant
Marilyn Hollander
Preschool Director
Lindy Schneider
Preschool Office Mgr.
Robyn Voigt
Religious School Administrator
Meridith Patera
Chai Lites Editor
Suzanne Epstein
Publicity
Tracie Breiter
Gift Shop
Bobbie Sion
Choir Director
Irwin Cohen
Photographers
Ken Bahr and Max Patera

The minutes of CBE Board Meetings
are available to all members in
the Temple office

Black and white copies of the
newsletter are also available in
the Temple office

SHABBAT UNDER THE STARS



July 28
August 25



A 6:30 pot-luck dinner on the patio
will precede each 7:30 PM service.
(Please note the earlier start-time for
these services.) (See page 4)

Join us on **Friday night July 14th**
as friends share about their recent
trip to Israel with the group called
Honest Reporting. The service
starts at 8 pm. Indy Rebhun and
Jeff Specter will discuss their trip,
what they saw and how facts are
distorted to vilify Israel in the
news. (See page 3)

SHABBAT IN 3-D: DAVEN, DINE AND DRASH

(learn about Jewish texts)

-Saturday July 22, 10:30-1:30

-Shabbat morning service will be
followed by a pot-luck
(vegetarian/dairy) lunch

-Presentation at 12:45 by Rabbi
Michele on the daily morning
blessings

(See page 4)

FOUND
WOMAN'S RING WITH
FIVE (5) STONES
IF YOU THINK IT MIGHT BE
YOURS, CALL MARILYN
AT THE TEMPLE

Table of Contents

Content	Page
Rabbi's Message Opportunities for Involvement	1
Bulletin Bytes Board of Directors	2
President's Message Cantor's Message	3
CBE Book Club Shabbat in 3D Golf Tournament Shabbat Under the Stars	4
Women of CBE July & August events	5
Membership/Open House Fundraising/Poker Tournament	6
Oneg Sponsors Recent Donations Sisterhood Simchas Havurah	7
Photos - Choir Party	8
Photos - Shabbat Under the Stars	9
Birthdays, Anniversaries Machzor Sale, Religious School Service - Photos	10
Mt. Sinai, Legacy Minyan Masters Call for Vendors	11
Yahrzeits, Condolences	12
Advertising	13-14
Ad - Israel Bonds	15
Schedule of Services, Candlelightings, and Torah Portions	16

President's Message

School is out and it is officially summer! I know that things tend to slow down in the summer, but not this year at CBE! We have a calendar full of events, and I encourage everyone to visit our website and Facebook page, and join our email list so that you can keep up with our temple activities.



This summer we have a poker tournament, wine tasting, membership BBQ, concerts in the park, and of course our "Shabbat Under the Stars" potluck and service. If you have not attended a "Shabbat Under the Stars" event, you are truly missing out. Our patio offers one of the best views of Simi Valley and we host the best shabbat services in Simi Valley. These services are also a perfect opportunity to invite a friend or neighbor and to schmooze with temple members.

Shalom,

Ryan Richmond

Cantor's Message

by Cantor Michael Russ



SUMMER 2017

OK. It may seem a little early to discuss High Holidays. However, just as the Temple Board, the Rabbi, the Cantor and the choir need to arrange and prepare for this important time on the Jewish Calendar, so does the congregation.

It's difficult to realize another year has gone by since last Rosh Hashanah. Some of us have had a wonderful year of simchas, some of us have had a difficult year, many of us have had a mixed year of good and bad.

All the more reason to take the time to review our lives; to understand the changes in our lives, to reassess our difficulties, to appreciate the good, to mourn for those we have lost and to give support and caring for those we know are suffering.

The cruelty of the world seems overwhelming sometimes. We usually read and hear about the difficulties of the world much more than the goodness of the world. Bad news sells, yet depresses us and, often times, angers us. Good news seems hidden and allusive. As the old story goes, when an auto accident occurs on the road we all get frustrated with the traffic jam, and yet when we see the actual accident scene we, too, slow down to observe. In our family, when we see the damage of an accident we say, "They're having a much worse day than we are."

As the Cantor of Congregation B'nai Emet, I have already begun preparing myself for the High Holidays. The older I get the more I must exercise my voice and search for new meanings of the prayers. Yet each year I also need to take time to assess my life, my family, my friends and acquaintances.

Once again I encourage everyone who attends the High Holiday Day services (and even those who do not attend) to purchase the prayer books now so that you have a chance to study what may be particularly meaningful and helpful to you. Even the "Introduction" of the Machzor can be helpful.

Anyone can purchase a prayer book and read it alone. However, as we gather together in prayer as a congregation we feel a part of a community that is also reflecting on the past year. We feel the support of others. Just as the choir and I need to restudy the music and exercise vocally, we all need to "restudy" our lives, to understand and accept the changes in our lives, and exercise the goodness we can offer to others and ourselves

Shanah Tovah! May you have meaningful High Holy Days and a healthy and enjoyable New Year!

GUEST SPEAKERS

Please join us on Friday July 14th at our 8 pm Shabbat service for a presentation on:

ISRAEL THROUGH THE LENS OF HONEST REPORTING



Speakers Indy Rebhun and Jeff Specter just returned from a special Mission to Israel where they heard from experts in Israeli politics, diplomacy, and military intelligence. They also met with Israelis, Druze and Bedouin, and learned about the real agenda behind the media's coverage of Israel.



HonestReporting
Defending Israel From Media Bias

Honest Reporting is an organization which promotes fair treatment of Israel by the world press according to the same standards applied to any other country. The three main approaches used are Monitoring the Media, Educating the Public, and Fighting the BDS Movement.

CONGREGATION B'NAI EMET
9 WEST BONITA
SIMI VALLEY, CA 93065
(805)581-3723
congregationbnaiemet.org



CBE BOOKS & BAGELS

Sunday July 9, 9:30 am
at The Corner Bakery
Simi Town Center
Simi Valley

"The Man in the High Castle"
by Philip K. Dick
It's America in 1962. Slavery is legal once again. The few Jews who still survive hide under assumed names. In San Francisco, the I Ching is as common as the Yellow Pages. All because some twenty years earlier the United States lost a war—and is now occupied by Nazi Germany and Japan.



SHABBAT IN 3-D

DAVEN, DINE AND DRASH

Saturday July 22

10:30 a.m.-1:30 p.m.

A Shabbat morning service will be followed by a pot-luck (vegetarian/dairy) lunch. Presentation at 12:45 by Rabbi Michele Paskow on the daily morning blessings.

For more information or to RSVP, please call our Temple office: (805) 581-3723



Congregation B'nai Emet
9 West Bonita Drive
Simi Valley, CA 93065
congregationbnaiemet.org



MEN'S CLUB MEMBERSHIP DRIVE



Saturday, July 22, 2017, 5 p.m. at Sinaloa Golf Course, 980 Madera Road, Simi Valley. Come, be part of the brotherhood, enjoy an evening of golf. If you don't golf, come have some fun.

New and existing members please contact Glen Knecht (805) 368-2671 for information.

The Men's Club meeting is the 1st Sunday of the month, 9:30 a.m. at the home of Glen Knecht. Address is 2396 Fasley Ave., Simi Valley.
July 2 and August 6.

On the 3rd Sunday of the month the Men's Club meet for breakfast 9:15 a.m. at The Junkyard Café, 2585 Cochran St., Simi Valley.
July 16 and August 20.

Join us for

SHABBAT UNDER THE STARS

July 28

August 25



A 6:30 pot luck dinner will precede the 7:30 service on the patio.

For more information contact the CBE office at
805.581.3723 or <mailto:bnaiemet@rain.org>

Women of CBE

The Women of CBE are in full motion with a calendar full of wonderful events for friendships, service, fun, social action, and more.

The June meeting had a large attendance of both men and women to hear Detective Tim Lohman speak about scams. He was an excellent speaker and what an education about what and how people can trick one another and how we can keep safe!

Our July 11 meeting will be dinner and a movie at the Studio Movie Grill at the Simi Valley Town Center.

For our August 8 meeting, Dawn Ringer, a Marriage and Family Therapist intern, will talk about older women's issues and dealing with grief and loss.

The annual District Area Day is Sunday, July 9, at Temple Judea in Tarzana. The day consists of workshops to train us to be more effective in sisterhood, breakfast, lunch, and friendships.

This year there is an optional bonus day on Saturday July 8 where we can attend URJ 6-Points Sports Academy at Occidental College in Pasadena. This is a sleepaway camp for Jewish Athletes. We will participate in a social action project and will be enjoying dinner and havdalah with the athletes.

The Women of CBE plan to have a fundraiser event once a month where we can visit, eat, and make a little money for our organization which in turn helps the temple with so many activities. Please encourage your family and friends to participate in these activities.

July 25 brings us another event at Charming Charlies in Simi Valley. We had such a great time last year shopping and spending so little. What a great place to get reasonably priced jewelry, purses, clothes, and even shoes.

Our August restaurant event will be TGIF on August 17. Hope to see you there!

RuthAnn Rossman

President




THE WOMEN OF CBE
invite you to our next general meeting:

**LADIES' NIGHT OUT:
DINNER & A MOVIE**

Tuesday, July 11 - 6 PM
STUDIO MOVIE GRILL
1555 SIMI TOWN CENTER WAY
SIMI VALLEY, CA 93065

\$5 Tuesday Movie Special
Dinner, drink, & dessert specials
(served during movie)

 **WOMEN OF REFORM JUDAISM**
STRONGER TOGETHER

 **THE WOMEN OF CBE**
invite you to our next
general meeting:

ADAPTING TO CHANGE

Join us as guest speaker Dawn Ringer, who is a Marriage and Family Therapist intern, speaks on challenges facing women today, including:

- grief and loss
- mid-life to older women transitions
- taking care of older parents
- being sandwiched between taking care of parents & children
- having adult kids at home

TUESDAY, AUGUST 8 - 7 PM - At CBE

RSVP to Tracie at tbreiter@yahoo.com or call RuthAnn at [818-312-7266](tel:818-312-7266).

Go to <https://www.studiomoviegrill.com>
for more info on theater & menu

**OPEN HOUSE
BBQ
and Havdalah**

**Saturday
August 5th | 6-8:30PM**

Come schmooze with members of CBE while we BBQ kosher hot dogs and answer any questions you may have about our congregation.

- Meet the Rabbi
- Tour the Facility
- Speak to Our Religious School Staff
- Learn about our Preschool
- Check Out Our Upcoming Events
- Enjoy Music and Refreshments



Congregation B'nai Emet
9 West Bonita
Simi Valley, CA
Ph: +1 805 581-3723

www.congregationbnaimet.org




JULY 8, 2017 TEXAS HOLD'EM TOURNAMENT

Annual CBE Texas Holdem Charity Tournament

Congregation B'nai Emet is holding its inaugural Texas Holdem Charity Tournament on July 8, 2017 at 6pm. There is a \$40 buy in, with up to 2 rebuys for \$40 each. Blinds increase every 20 minutes. The rebuy period ends after the fifth blind level (after 100 minutes). Cash at time of buy in or rebuy.

Light snacks, water, and soft drinks will be provided; and you are welcome to bring your own beverage or favorite dairy or vegetarian snacks.



RSVP

By email: bnaimet@rain.org

By phone: +1 805 581-3723

\$40.00 Buy In

2 Rebuys

(First 100 minutes)

5,000 Chip Stacks

20 Minute Blinds

**Non Cash Prizes
to Top 5 Finishers**

**50% of Buy Ins &
Rebuys Determine
Prize Pool**

CBE

9 West Bonita Drive
Simi Valley, CA 93065

+1 805 581-3723

www.congregationbnaimet.org

July 8, 2017

6pm to 10pm

Membership

Last month, CBE had a booth at the Simi Valley Street Fair. Over twenty people signed up to get more information about our temple. When asked what they wanted from a temple, the number one response was community. As the school year and membership year end, it has been wonderful to see how our members help build our community. I also wanted to thank all members for their continued financial commitment, participation, and outreach to others. Your support can only make our community grow.

This summer our annual Membership Open House will be on August 5 from 6:00-8:30 pm. Please invite friends and family and join us in renewing your membership. There will be a yummy barbecue dinner sponsored by the Men's Club, and the evening will end with a special Havdalah service. I look forward to seeing our Jewish community there.

Warmly,
Frieda Bahr
VP of Membership

*Sanford Miller and
Frieda Bahr in the
CBE booth at the
Simi Valley Street
Fair*



Fundraising

We have three fundraising events over the summer.

1. There will be a poker tournament early in July.
2. Jewish Appreciation Day at Dodger Stadium, Sunday, Aug 13, 2017. 1PM start. Cost for the Dodger game is \$55.00 per seat. There will be a Baseball Hat given away with the word Dodgers written in Hebrew. In order to get the hat you must purchase your tickets through the temple. You must provide your own transportation and parking.
3. There will be a wine tasting at the temple the last weekend in August.

If you have any questions about these events feel free to contact me, Michael Mutal at mmmutal@gmail.com or [805-587-9210](tel:805-587-9210).

Michael Mutal
VP Fundraising



Oneg Sponsors

Thank you to Les & Daryl Sutton for the weekly challahs. Delish!

May 5, 2017

The York family in memory of Jesse Price Orellana

Julia Farago in memory of the birthday of Thomas Farago

May 12, 2017

Debra Schranze in memory of Beverly Friedman & Robert
Friedman

The York family in memory of Alexa Wiener

Andrew & Suzanne Mahler in honor of their mothers &
their first anniversary

May 19, 2017

Louise & Melvin Edelson in honor of daughter Teri Edelson's
surviving a heart attack

Louise & Melvin Edelson in memory of Louise's father
Morris Silversher

Renee Kieselbach in memory of her mother Mildred Ertel Jessel

Paul & Zoe Venhuizen in memory of Zoe's father Jack Irving
Yaskiel & Paul's birthday

Stan & Sandy Melnick in honor of the bar mitzvah of their
grandson Shayden Spale

Rachel Utiger in memory of Sadie Frank, Sheldon Golison &
Loree Utiger

Maxine Seidel in memory of Rita Seidel

May 26, 2017

Tami Plotkin in honor of Tami & Jeff's first date in 1973

RuthAnn Rossman in honor of all her sisterhood sisters who
celebrate birthdays in May

The Rossman family in honor of the birthdays of Steve, Zach
& RuthAnn

Geri Brandler in honor of all the May birthdays & winning
first place in bridge today – 5000 points!!!

June 2, 2017

Ronnye Sacks in memory of Fred Sacks

Cathy Holst for dog Rusty, may he live a long and happy life.

Also in honor of daughter Karen's birthday &
grandchildren Matthew & Allison's 3rd birthday

Kathy Smith in memory of Leroy Ackerman

Minnie Anzo in honor of Megan Smith making the Dean's List

Bob & Lori Sherden in memory of Penny Neugroschl

June 9, 2017

Judy Epstein in memory of Julius Fleischmann & Kurt
Fleischmann

Meridith Patera in honor of the graduates, students & staff of
CBE Religious School, & in memory of Irine Heimann

The Ranelletti family in honor of Lauren's graduation

June 16, 2017

Sharlene Pass in memory of Morris Pass

June 23, 2017

Michael & Marilyn Hollander in honor of Michael's birthday

Zoe Venhuizen in memory of Dena Daniella Yaskiel

The Richmond Family in honor of Ryan & Natalie's 18th
anniversary

Marty Richter in memory of Abe Richter

Rabbi Michele in honor of the birthdays of Shimon & Carol
Paskow

Recent Donations

Building Improvement Fund Donations

Andrew Pock – in honor of The Jewish People

Ken and Suzanne Epstein – in memory of Werner Hollander

Michael and Merle Russ – in memory of Cantor Herman
Russ

Bella Hananel – in memory of Miriam Stein

Rabbi's Discretionary Fund Donations

Les and Daryl Sutton – Happy Mother's Day to Joan Nadler

Minnie Anzo – in honor of CBE's "Fabulous Rabbi
Michele"

Jeanne Waksman – in memory of Marvin Waksman

Memorial Donations

Mitchell and Lynn Salberg – in memory of Burton Borrok

Anthony and Laura Luskin – in memory of Aron
Pichkhadze

Sheldon and Joan Liebmann – in memory of Bertha
Liebmann and Leon Brody

Marian Nadich – in memory of Paul Nadich and Fanya
Bronfermachev

Glen and Debbie Knecht – in memory of Bernice Hearn

Judith Miller – in memory of Cynthia Miller

Linda Landau – in memory of Michael Liebmann

Marianne Susman – in memory of Leslie Goldhammer

Prayer Book Donations

The 7th Grade Graduating Religious School Class

General Donations

Suzanne Mahler

Michael Mutal and Julie Bienenfeld

Catherine Holst

Bob and Barbara Poehls

Sisterhood Simchas - June

RuthAnn Rossman: Thank you Detective Tim Lohman
for opening our eyes to fraud.

Thank you Alice for setting up for
speaker Det. Lohman.

Congratulations to our wonderful staff at CBE.

Sandy Melnick: Happy birthday to Griffin Melnick.

Happy birthday to Shayden Spale.

Cheryl Hirsch: In honor of our 42nd anniversary.

Havurah

If you are interested in joining a Havurah, please call Jill
Katell at 818-429-9423 or reach her by email at
mailto:grkatell@pacbell.net


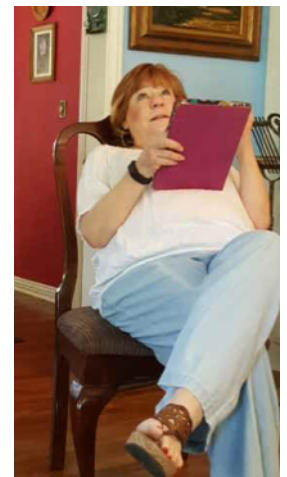
Annual Choir Party



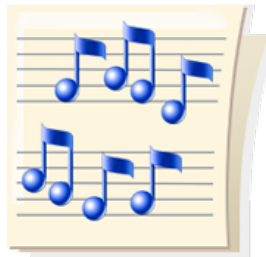
TOP 10 REASONS FOR JOINING THE CHOIR

1. You enjoy singing and want to form attachments with others who enjoy singing.
2. You want to learn more about music.
3. You want to learn more about prayer.
4. You want to learn more about Hebrew. (Reading Hebrew not required. Everything is transliterated into English.)
5. Want to participate more in the service and get good seats.
6. You need an outlet for expressing yourself.
7. You need an occasional night away from the daily grind.
8. You don't have a budget for therapy. (Remember, music "soothes the savage soul.")
9. You're ready to try your singing outside the shower and the car.
10. You've thought about it a million times.

(Contact Irwin Cohen at 526-8432, or Irwin.LC@aol.com)

11. Look how much fun you could be having!



First 2017 "Shabbat Under the Stars"



Yummy Pot Luck Dinner preceding service



Lots of congregational participation



שבת שלום
Shabbat Shalom!



Beautiful view of Simi Valley from the CBE patio

Let's Celebrate - Mazel Tove!

<i>Birthdays</i>		<i>Anniversaries</i>	
Jul 3	Jody Epstein	Jul 17	Bob and Barbara Poehls 34th
Jul 4	Alyssa Enright	Jul 18	Rabbi Shimon and Carol Paskow 55th
Jul 4	Debra Schranze	Aug 1	Jerry and Jan Auerbach 35th
Jul 8	Judith E. Sternberg	Aug 3	Sheldon and Joann Liebmann 65th
Jul 9	Jeffrey Plotkin	Aug 6	Paul and Zoe Venhuizen 36th
Jul 9	Bob Poehls	Aug 8	John and Cindy Elhai 24th
Jul 9	Karen Ribstein	Aug 12	Herschel and Laura Berger 28th
Jul 10	Erica Weiner	Aug 12	Stan and Sandy Melnick 55th
Jul 12	Jacob Inbar	Aug 16	Steven and Joyce Glick 36th
Jul 12	Lynne Selbst	Aug 23	Michael and Amy Mittelman 2nd
Jul 15	Mel Edelson	Aug 24	Steven and Holly York 32nd
Jul 15	Amy Field	Aug 25	Julie and Scott Ranelletti 15th
Jul 17	Jonathan Cohen	Aug 26	Jeffrey and Tamara Plotkin 38th
Jul 18	Steven Glick		
Jul 18	Joan Liebmann		
Jul 21	Steven York		
Jul 22	Scott Ranelletti		
Jul 25	Shai Levy		
Jul 27	Brandon Enright		
Jul 27	David Nusbaum		
Jul 28	Erik Breiter		
Jul 29	Samuel Patera		
Jul 30	Michelle Foster		
Jul 30	Jeff Melnick		
Jul 31	Joshua Bordo		
Jul 31	Robert Sherden		
Aug 1	Mark Mutal		
Aug 2	Cosmo Pizzo		
Aug 5	Regina Brandler		
Aug 6	Louise Edelson		
Aug 7	Andrew Hollander		
Aug 7	Ryan Richmond		
Aug 7	Brandon Tellio		
Aug 7	Melisa Tellio		
Aug 9	Matthew Epstein		
Aug 9	Lynne Kelly		
Aug 9	Eliana Plotkin		
Aug 9	Valerie Singh		
Aug 11	Mark Brandler		
Aug 11	Jessica Breiter		
Aug 11	Steven Friedman		
Aug 11	Danny Jordan		
Aug 11	Harry Schned		
Aug 13	Max Patera		
Aug 15	Wendei Spale		
Aug 18	Al Levy		
Aug 18	Jessica Schned		
Aug 19	Gabriel H. Rossman		
Aug 21	Melissa Bergmann		
Aug 21	Jill Katell		
Aug 21	Stacy Lowenschuss		
Aug 22	Louis Tepfer		
Aug 23	Blake Bosworth		
Aug 26	Frieda Bahr		
Aug 26	Brittany Ribstein		
Aug 27	Megan Smith		
Aug 28	Joyce Glick		
Aug 29	Patricia Schned		
Aug 30	Bennett Patera		

The New Machzor of the Reform Movement
Inspiration, Tradition, Innovation



The New High Holiday Prayerbook, Mishkan HaNefesh, comes in two volumes and offers meaningful liturgy for both regular service attendees and those new to Jewish spirituality and practice.

Our congregation is continuing to purchase 300 sets of these beautiful new books for our High Holy Day worship services.

PLEASE CLICK HERE FOR MORE INFORMATION & TO DONATE OR PURCHASE A SET OF BOOKS.

<http://congregationbnaiemet.org/donations.php>

End of Year School Service



Students enjoy challah from Village Bakery & Cafe at the June 9 service.



Raise funds for Congregation B'nai Emet when you purchase property at Mount Sinai Simi Valley

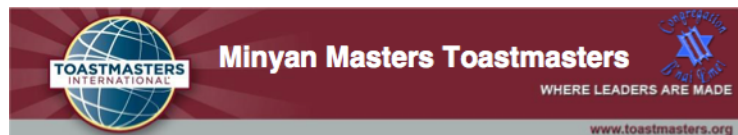
CBE is participating in a unique fundraising program with Mount Sinai Memorial Parks and Mortuaries to raise substantial funds for the synagogue.

For a limited time, when our congregants collectively purchase ten spaces in advance of need at nearby Mount Sinai Simi Valley, Mount Sinai will donate \$1,000 per regular space (wall or ground), \$1,500 per lawn crypt (wall or ground) or \$2,000 per companion estate directly to B'nai Emet as each property is paid in full.

To schedule a confidential meeting to learn more about pre-planning and the 10/Ten Program with Mount Sinai Simi Valley, please contact Josh T. Ryan, or Eric Frank, B'nai Emet's Advance Planning Representatives:

Josh T. Ryan
805.306.6411
jtryan@mountsinaiparks.org

Eric Frank
805.306.6410



FUTURE CLUB MEETINGS

WHEN: 1st & 3rd Tuesday of every month!

TIME: 7:15PM

WHERE: Congregation B'nai Emet
9 W. Bonita Drive
Simi Valley, CA 93065

הקשבה Listening

"Minyan-Masters" is a new Toastmasters group forming on Wednesday evenings in Simi Valley. This will be a Jewish-based group, helping people build their communication and leadership skills, while at the same time allowing everyone to explore their spirituality, or discuss topics related to Jewish life, history and culture.

No previous experience necessary; no religious affiliation required; **everyone welcome!**

Does this describe you?

- Want to **learn** to speak more comfortably in front of people?
- Want to **improve** your communication and leadership skills?
- Want **personal** or **professional** growth in 2017?

Toastmasters can help!

Help us start a friendly and supportive Toastmasters Club to reach those goals.

תקשורת Communication

For more information contact:
Alan Mann, DTM alanmann60@att.net
805-341-3836

THOUGHT ABOUT YOUR LEGACY?

As you update your Will or Trust, please include CBE as a beneficiary. Assigning a portion of your estate to CBE is a simple way to reduce estate taxes and ensure the growth and continuity of our Jewish community. Our President, Ryan Richmond, or Treasurer, Les Sutton, are available to work with you to help set this up.

From Generation to Generation...

Making your family part of ours

CEMETERY PROGRAM

Experience has taught the Jewish people how vital it is to anticipate the future and to be prepared... to act before the need occurs. This is especially important when considering making pre-need arrangements for cemetery property.

B'nai Emet's program with Mount Sinai Mortuary for pre-need arrangements now has a unique program available to our Temple members and has already seen results.

You can perform two mitzvot with one action. You can relieve your loved ones of a distasteful, but necessary, chore at a most stressful time, and you can help support Congregation B'nai Emet. Now is the time to do it!! Give yourself "peace of mind" before the need arises.

Contact either **RuthAnn Rossman** via the Temple office, or **Josh Ryan** at Mount Sinai, Advance Planning Representative, 805.306.6411
jtryan@mountsinaiparks.org

Identify yourself as a CBE member and receive all the details. There is no obligation.

CALL FOR VENDORS:

**HANUKKAH
BOUTIQUE**

Sunday, November 12
9 AM - 3 PM
Congregation B'nai Emet
9 West Bonita Drive
Simi Valley, CA 93065

MORE INFO: <http://congregationbnaiemet.org/judaica.php>

Yahrzeits

Jul 1	Shirley Borrok	Tammuz 7	Aug 1	Ruth Sacks	Av 9
Jul 1	Leatrice Goldstein	Tammuz 7	Aug 2	Walter Brandler	Av 10
Jul 2	Irwin Katz	Tammuz 8	Aug 2	Marcia Rifkin	
Jul 2	Jack Shultz	Tammuz 8	Aug 5	Richard Fineberg	Av 13
Jul 3	Frank Mutal	Tammuz 9	Aug 5	Norman Wohlner	Av 13
Jul 4	Charnette Shilling	Tammuz 10	Aug 10	Jack Apfelbaum	Av 18
Jul 5	Lee Lieber	Tammuz 11	Aug 11	Irwin Foster	
Jul 6	Lawrence Chusid	Tammuz 12	Aug 11	Phyllis Landau	Av 19
Jul 6	Ruetta Orloff	Tammuz 12	Aug 11	Irving Pfefer	Av 19
Jul 7	Florence Cricco	Tammuz 13	Aug 11	Daniel Scop	Av 19
Jul 10	Steven Borrok	Tammuz 16	Aug 12	Donald Marx	Av 20
Jul 11	Harry Gould	Tammuz 17	Aug 12	Herman Scharf	
Jul 11	Bernice Levy	Tammuz 17	Aug 13	Abraham Jacob Frank	Av 21
Jul 12	Vera Glazer	Tammuz 18	Aug 15	Art Schultz	
Jul 13	Karl Menke	Tammuz 19	Aug 16	Laura Bloch	Av 24
Jul 13	Irys Schneider	Tammuz 19	Aug 16	Murry Fromer	Av 24
Jul 14	Michael Liebmann	Tammuz 20	Aug 16	Dianne Marks	Av 24
Jul 15	Barbara Primus		Aug 18	Estelle Breiter	Av 26
Jul 16	James Steffens	Tammuz 22	Aug 18	Lou Gotenstein	Av 26
Jul 17	Lillian Smith	Tammuz 23	Aug 19	Ann Hirschorn	Av 27
Jul 18	Irene Goldbloom	Tammuz 24	Aug 20	Katherine Diana Mutal	Av 28
Jul 18	John Levin	Tammuz 24	Aug 22	Eric Tepfer	Av 30
Jul 19	Bessie Keimon	Tammuz 25	Aug 23	Frances Shilkoff	Elul 1
Jul 20	Edwin Kaufman	Tammuz 26	Aug 24	Victor Ringer	Elul 2
Jul 20	Cecilia Schwartz	Tammuz 26	Aug 24	Brett Tabak	Elul 2
Jul 21	Harry Goldberg	Tammuz 27	Aug 26	Barbara Ann Kitt	Elul 4
Jul 22	Earl Rosado	Tammuz 28	Aug 27	David Breiter	Elul 5
Jul 23	Debby Odens	Tammuz 29	Aug 27	Sylvan Greenwald	Elul 5
Jul 24	Frieda Davis	Av 1	Aug 27	Harry Shaw	Elul 5
Jul 28	Shary Farkas	Av 5	Aug 27	Howard Vine	Elul 5
Jul 29	Ruth C. Frolove	Av 6	Aug 28	Irene Goldhammer	Elul 6
Jul 30	Ruth Dacks	Av 7	Aug 28	Philip Goodman	Elul 6
Jul 30	Harold Mann	Av 7	Aug 28	Winfred Jackman	
Jul 31	Medill Bienenfeld	Av 8	Aug 29	Leonard Hollander	Elul 7
Jul 31	Carl Oliver	Av 8	Aug 31	Ann Glassman Cohen	Elul 9
Jul 31	Abraham Pichkhadze	Av 8	Aug 31	Isaac Sion	Elul 9
Aug 1	Melvin Bernstein	Av 9			
Aug 1	Florence Neugroschl				

Please check the current Yahrzeit information on the data sheet you received in membership packet. Verify its accuracy and call the office with any changes or new Yahrzeit information.

During the year, you will receive reminders for upcoming Yahrzeit dates. We want to have complete and accurate information.

Call the temple office with any questions regarding Yahrzeit data.

Thank you.



How to Observe a Yahrzeit at CBE

Light a 24-hour memorial candle in your home at sundown on the evening that begins the yahrzeit (anniversary of death.). It is also customary to attend Shabbat services at Temple and recite the Kaddish.

At Congregation B'nai Emet, names of your loved ones are read on the Friday evening before the Yahrzeit. If you observe the Gregorian (English) date, the name will be read following the yahrzeit date. It is suggested that you make a contribution to the Temple so that the memory of your loved one can be honored with an act of love and kindness.

Condolences to:

Laura Tepfer and family on the passing of her mother, Irine Heimann.

Ron and Gail Mittelman on the passing of Ron's brother, Don.

Yehi zichronom l'vrachah – may their lives be a blessing and an inspiration

NEED A CARD? MAKE IT A DONATION !

Send a thoughtful greeting for sympathy, birthdays, congratulations, or just to reach out to someone



Cards from the Women for Reform Judaism's YES Fund go to support projects for Youth, Education and Special Projects here and in Israel, such as rabbinic training and Israeli preschools for needy children.

Each card is hand written and mailed for you; all you have to do is contact us with the information and send a check made out to Women of CBE.

Prices start at \$3.00 for a plain card and \$6.00 for a colored picture card.

Other items are available. To purchase a card, contact Lynne Kelly at lkelmo@aol.com

GIFT CARDS

GIVE THE GIFT THAT GIVES BACK!!!

To purchase gift cards, contact Gift Card Chair Bobbie Sion at sionfam@gmail.com or leave a message at the temple: (805) 581-3723

Go to <http://www.congregationbnaiemet.org/sisterhood.php>

For a printable gift card order form listing all the many cards you can order.

You can also order a personalized certificate so that your recipients can choose their own cards.

B'nai mitzvah students:

Register for the gift cards you want!!!

Digital Wide & Small Format, Printing, Copying

Copy Center, Too!

Tim R. Anderson
Manager

P. O. Box 931
Newbury Park, CA 91319-0931

"Your Printing, Design, and
Photocopying Specialist"

Phone: 805-914-8271
e-mail: tim@copycentertoo.com

Cell: 805.501.8071
Fax: 805.620.3740

JO ANN POOLE
Poole Your Effort!
Broker Associate
CalBRE 01058326

E-Mail: JoAnn@JoAnnPoole.com
Web: www.JoAnnPoole.com

Michael's Flowers
Sending Smiles Everywhere

805.527.9104
800.554.9083
1951 Sequoia Ave.
Simi Valley, CA 93063
www.michaelsflower.com
Open 7 Days

Imagine Your Ad Here

Business Card size

\$100.00 per year

\$45.00 for 1 issue

1/4 page ad

\$165.00 per year

\$65.00 for 1 issue

1/2 page ad

\$265.00 per year

\$95.00 for 1 issue

Full page flyer

\$420.00 per year

\$130.00 for 1 issue

Call Temple office For more
information

GIVE THE GIFT THAT GIVES BACK!



3 Easy Ways to Earn for Our Group

1. Sign Up/Add Cards
2. eScrip Online Mall
3. eScrip Dining by Rewards Network

Click to learn how!

Support the temple by purchasing gift cards for many local and national businesses and restaurants

Click here for more info: <http://congregationbnaiemet.org/sisterhood.php>

SIMI'S HOUSE OF JUDAICA

**Located
at CBE**



**For all your
Judaica
Needs!**

**Call (805)
581-3723 for more
information, hours
of operation &
holiday boutiques.**

Holiday Items
Shabbat Needs
Bar/Bat Mitzvah Registry
Huge Selection of Jewelry
Kipot & Tallises
Gifts for All Occasions
Mah Jongg Goodies
Greeting cards
Personalized kippot &
Invitations by special order



Realtor
BRE Lic# 01933019

KELLER WILLIAMS
Exclusive Properties



Maxine Seidel
c: 818.516.2182
f: 805.624.7521
maxineseld@aol.com
Let's Make It Happen!

Keller Williams Exclusive Properties
2655 First Street, Suite 150
Simi Valley, CA 93065
Each Office Independently Owned and Operated


TURN YOUR CAR INTO A MITZVAH!

Donate it today! Call: 855-500-RIDE

[http://www.cardonatingiseasy.org/donate/?
CharityID=3316](http://www.cardonatingiseasy.org/donate/?CharityID=3316)

Free Pickup; tax write-off – "win-win"!





YOUR FAMILY IS PRECIOUS TO YOU

Plan ahead with a gift of love for
those you care about most.

Congregation Bnai Emet Advance Planning Representatives

Eric Frank
805-306-6410
efrank@mountsinaiparks.org

Josh T. Ryan
805-306-6411
jtryan@mountsinaiparks.org



Simi Valley FD 1745 6150 Mount Sinai Drive, Simi Valley CA 93063
Hollywood Hills FD 1010 5950 Forest Lawn Drive Los Angeles CA 90068
www.mountsinaiparks.org 800-600-0076
Dedicated to the entire Jewish community as a service of Sinai Temple of Los Angeles.

ATTENTION

CALLING ALL INDIVIDUALS WITH KNOWLEDGE OF
BUILDING INTERIOR CONSTRUCTION WORK

OR

LITERATE IN COMPUTER INTERNET/WEBSITES

To serve on the Temple Building Improvement Committee. Do you want to see the Temple's interior design, aesthetic, improved? Do you want to be part of the fund oversight, making sure donations are spent wisely?

Then the Temple Building Improvement Committee is
the place for you.

THE TEMPLE NEEDS YOUR HELP!!!!

Contact Debbie Knecht (805) 368-2571 - cell# or

INVEST IN ISRAEL

Invest in Israel Bonds · israelbonds.com



Development Corporation for Israel/Israel Bonds

This is not an offering, which can be made only by prospectus. Read the prospectus carefully before investing to fully evaluate the risks associated with investing in Israel bonds. Member FINRA Photo: Sean Pavone/Shutterstock.com

Schedule of Services, Candle lightings, and Torah Portions

Date	Candle Lighting	Service	Torah Portion
July 7/14 Tammuz	7:52 PM	Family Service 7 PM	Balak - Numbers 22:2 - 25:9
July 14/21 Tammuz	7:49 PM	Shabbat Service 8 PM	Pinchas - Numbers 25:10 - 30:1
July 21/28 Tammuz	7:45PM	Shabbat Service 8 PM	Matot-Masei - Numbers 30:2 - 36:13
July 28/6 Av	7:40 PM	Shabbat Under the Stars Potluck Dinner 6:30 PM Service on Patio 7:30 PM	Devarim - Deuteronomy 1:1 - 3:22
August 1/9 Av		Tisha B'Av	
August 4/13 Av	7:34 PM	Family Service 7 PM	Va'etchanan - Deuteronomy 3:23 - 7:11
August 11/20 Av	7:27 PM	Student-led Family Service 7PM Religious School Graduation & Staff Appreciation	Eikev - Deuteronomy 7:12 - 11:25
August 18/27 Av	7:19 PM	Shabbat Service 8 PM	Re'ei - Deuteronomy 11:26 - 16:17
August 25/4 Elul	7:11 PM	Shabbat Under the Stars Potluck Dinner 6:30 PM Service on Patio 7:30 PM	Shoftim - Deuteronomy 16:18 - 21:9

GO TO OUR WEBSITE: CONGREGATIONBNAIEMET.ORG

OR VISIT OUR FACEBOOK PAGE- <https://www.facebook.com/cbesimi/> TO TO SEE OUR ACTIVITES AND WAYS TO SUPPORT OUR TEMPLE
CONTACT MERIDITH TO RECEIVE WEEKLY EMAIL UPDATES. mspatera@earthlink.net



Congregation B'nai Emet
P.O. Box 878
Simi Valley, CA 93062-0878

DATED MATERIAL

—Please do not delay delivery—