



9 West Bonita Dr.
Simi Valley, CA 93065

Phone: 805-581-3723

Fax: 805-581-3160

info@cbesimi.org
www.cbesimi.org



Find us on Facebook!

www.facebook.com/cbesimi/

Chai-lites

Sept.-Oct. 2019

Elul 5779

Tishrei 5780

Cheshvan 5780

Vol. 40. Issue 6



Dear Friends,
Shanah Tovah!

One of the things I find very helpful and uplifting about the themes of Rosh Hashanah and Yom Kippur is the idea of starting over again with a clean slate. There is a hopeful

promise of a new beginning, as we refresh ourselves, clear away the errors, bad deeds and negative feelings of the past year(s), make amends and have a chance to improve ourselves and try again. The fact that we do this together as a community makes it even more powerful, as we understand this striving to refine ourselves and not be moored by guilt or past errors. We can let go of past hurts and move forward.

With this in mind, one rabbi has pointed out that something seems oddly missing from the Rosh Hashanah liturgy. After all, we're celebrating the new year, the creation of the universe and humanity. We would expect that somewhere in the Torah reading, there would be reference to Genesis, particularly to the first two chapters! But none is found; why omit the biblical account of cosmogony, the birthday of the universe?

The Rabbis selected nothing for the High Holidays that deals with cosmology or the nature of the Creator. Instead, they chose readings dealing with intimate human relationships: the dynamics between mother Sarah and Hagar and her son, Ishmael, and the enigmatic relationship between father Abraham and his son, Isaac.

Interestingly, the Rabbis did not focus on the secret designs of the Creator, or the mysteries of the world. The sages selected biblical stories focusing on the family and of the human world. And not on the idyllic family either, but the family in the throes of struggle: jealousy, rivalry, and conflicts of loyalty and trust. It's as if the Rabbis were telling us, "Do not look into the heavens or beneath the oceans to discover Godliness. You will not find spirituality in mountain-top isolation or speculation, but

in community, in being together with others and learning how to work it all out."

Our tradition teaches us that we are part of a family, the House of Israel. Come and be counted as part of the family. Rosh Hashanah is the internal, personal side of Jewish theology. It asks not for the origins of the species or the first Big Bang, but whether we choose to live with purpose and meaning in our lives.

CBE offers educational, religious and social programs for people of every age. The Temple family is here for you. So, come to shul and bring others along. You will be filled with contentment, make close friends, and have a sense of belonging to a very special and unique community and People.

As we enter this High Holiday season, I hope the beauty, poetry and profound meaning of our prayers will inspire you. May the words fill your spirit with holy optimism; may they indeed lead us to healing and transformation. And, as we say in our prayers, may we all be inscribed in the Book of Life, Blessing, Peace and Contentment, Amen.

Shalom u'vrachah! (Peace & blessing)
L'Shanah Tovah Tikatayvu,
Rabbi Michele Paskow

Gematria (Jewish number-play) from Rabbi Michele

The new year will be 5780, in Hebrew letters it's תש"פ (T, Sh, P), each letter represents a numerical value,
We know it's 5,000 something, so we use

ת/Τ = 400

ש/Sh = 300

That's 700

פ/P = 80 ⇒ 5780

Using each of these letter symbols for words, we can say:

תש"פ וריה! פנה של שהי ת

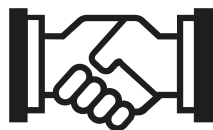
Thee Shanah shel Poriyah

May this be a year of fruitfulness and productivity!

Shanah Tovah! ~ שנה טובה

Board & Affiliates

Michele Paskow <i>Rabbi</i>	Geri Brandler <i>Financial Secretary</i>
Michael Russ <i>Cantor</i>	RuthAnn Rossman <i>Sisterhood President</i>
Les Sutton <i>President</i>	Marty Richter <i>Men's Club President</i>
Steve Rossman <i>Executive VP</i> <i>VP, Facilities</i>	Cindy Shilkoff <i>Temple Office Admin.</i>
Daryl Sutton <i>Secretary</i>	Lindy Schneider <i>Preschool Director</i> <i>Office Manager</i>
Ryan Richmond <i>Treasurer</i>	Meridith Patera <i>Religious School Admin.</i>
Alan Mann <i>VP, Membership</i>	Suzanne Epstein Bruce Stein
Sandy Miller <i>VP, Fundraising</i>	Tamara Leviton <i>Communications Editors</i>
Natalie Richmond Maxine Seidel <i>Co VPs, Programs</i>	Bobbie Sion <i>Gift Shop Admin.</i>
Debbie Schranze <i>VP, Havurah</i>	Julie Bienenfeld Mutal <i>Choir Coordinator</i>
OPEN POSITION <i>VP, Religious School</i>	Ken Bahr Max Patera <i>Photography</i>
Suzanne Crawford Mahler <i>VP, Social Action</i>	



General Information

Minutes of CBE board meetings, and black-and-white printed copies of this newsletter, are available upon request at the temple office.

To be added to the CBE email list: send an email, or go to the Facebook page or website (contact info is on the cover of this newsletter).

Contents

Rabbi's Message	1
Messages from Leadership	3
President	3
Executive VP	3
Cantor	4
Special Services	6
High Holidays Services	6
Back to Shul Family Shabbat	7
Sukkot & Simchat Torah Shabbat	7
Upcoming Events	8
Books and Bagels	8
Sukkah-raising	8
Social Action	9
Women of CBE	10
Recent Events	12
L'Dough V'Dough	12
Apples & Honey Faire	13
Shabbat Under the Stars	14
Oneg Sponsors	14
Recent Donations	15
Legacy Giving	16
Jewish Education	16
Mazel Tov!	17
Birthdays	17
Anniversaries	17
B'nai Mitzvot	17
Yahrzeits	18
Condolences	19
Schedule	20

Become a Chai-lites Sponsor!

A great way to promote your business while also supporting CBE! Contact the temple office for more information.

Ad Size	Single Issue	Full Year (6 Issues)
Business Card	\$45.00	\$100.00
1/4 page	\$65.00	\$165.00
1/2 page	\$95.00	\$265.00
Full page	\$130.00	\$420.00

Messages from Leadership



It has been a busy summer for our congregation! In this issue, you'll see photos from some of our great events: Shabbat Under the Stars, the Apples and Honey Faire, and L'Dough V'Dough. We also had a great turnout of thirty-five people for Jewish Community Day at Dodger Stadium in July. Thanks to all those who

helped make these events happen, and to everyone who participated!

With summer's passing comes the holiest time of the Jewish year, the High Holidays. Once again, services will be held in the beautiful sanctuary at Mount Sinai Memorial Park in Simi Valley. Rabbi Michele Paskow and Cantor Michael Russ, accompanied by our returning guest choir director, Mark Husey, will lead the services. All current members in good standing will be issued tickets as part of their membership benefits. If you have not renewed your membership, don't worry! If you purchase High Holidays tickets, then decide to renew or become a member before Dec. 31st of this year, the cost of the tickets will count towards your dues. The schedule of services can be found in this issue, as well as on the CBE website.

During the High Holidays, it is traditional to honor and remember our departed loved ones. In the spirit of tzedakah, we hope you will make a donation to the Yizkor Remembrance Book as tribute to those who have gone before. Suggested donations are multiples of \$18 (\$36, \$54, \$180, etc.), but any amount you feel comfortable with is much appreciated and makes an important contribution.

We hope to receive our beautiful new ark before the upcoming High Holidays. Watch for announcements about a special dedication service in the near future.

Our VP of Facilities, Steve Rossman, has begun the process of receiving bids for the remodeling of our restrooms. This will be a major undertaking, which we hope to complete within the next 6-12 months. We ask for your patience and understanding while we bring our "loos" into the 21st century.

On behalf of the CBE board, I wish you Shanah Tovah—a very happy and healthy New Year!

Les A. Sutton, DDS
CBE President

What's New Around the Building?

The chair donor plaque is up in the sanctuary—many thanks to all those who donated!

The trees in our garden have all been trimmed, and I encourage everyone to take a look and see how much fruit we have!

The Men's Club has kindly donated money for additional lights for the patio, which have now been permanently installed. We will all appreciate this at future Shabbats Under the Stars!

Donations and sponsorships help us accomplish needed improvements in a timely manner. We could not do it without you, our community!

Steve Rossman
Executive VP/VP, Facilities



Join the CBE MEN'S CLUB for Friendship & Brotherhood

Be a part of your temple family



What we are about

- Help with temple events & fundraisers
- Monthly breakfast at Junkyard Cafe
- Game night
- Club outings



Annual cost
- \$36.00 annual membership

For more information, contact:
Marty Richter at martyvspc@aol.com or 805-581-3723



Men's Club

STOP BIGOTED SPEECH AND ACTIONS! BE SILENT NO MORE!

As we approach Yom Kippur, I feel that I must repent for having been silent too long in the face of the resurgence of bigotry, in this country and around the world. It is painful to see the ideals upon which the U.S.A. was founded being trampled on by hateful rhetoric, not only against those perceived as “other,” but against many of our own citizens. We must not think, as many Germans did prior to World War II, that “it can’t happen here.” History has taught us again and again that no social structure, no matter how sophisticated, is proof against hate on its own. It is the members of a society who must defend freedom and justice.

White supremacists continue to be emboldened by the bigoted speech we hear on the news and from our leaders every day. The anti-Semitism inherent in their creed and chants is all too familiar to us. We must not allow ourselves or those around us to become accustomed to a “new normal” in which ugly language and cruel actions can be ignored, as long as they do not directly affect us. Silence is the oxygen that feeds the fires of hatred. No matter how difficult it may be to confront a friend who is repeating stereotypes, or get help for a stranger who is being harassed, we must do it. We must not forget that protecting any one person from bigotry and hatred contributes to the protection of everyone—including ourselves.

Tishah b’Av is just behind us. The holiday commemorates the two destructions of the Temples in Jerusalem, and provides us space to grieve the other sorrows in our history. It does not carry a message of despair, however, but one of survival and renewal in the wake of tragedy. Ahead of us are the High Holidays, in which the dominant theme is that we are all capable of change, not only personally, as individuals, but as participants in the work of building a better world. We must hold onto the belief that a better world is possible, and not become resigned to the world as it is. I hope you will all join me this year on the High Holidays to stand up and be proud of our Jewish heritage, and to reaffirm our commitment to helping create a more just, peaceful, and loving world.

Michael Russ
Cantor



A Poem for Yom Kippur

Kol Nidrei: All the Vows
by Ze'ev Falk

All the vows on our lips,
the burdens in our hearts,
the pent-up regrets about
which we brooded and spoke
through prayers without end
on last Atonement Day
did not change our way of life,
did not bring deliverance
in the year that has gone.
From mountain peaks of fervor
We fell to common ways
At the close of the fast.

Will You hear our regret?
Will You open our prison,
Release us from shackles of habit?

Will you accept our prayers,
forgive our wrongs,
though we sin again and again?

In moments of weakness
we do not remember
promises of Atonement Day.
recall that we easily forget,
take only our heart's intent.
forgive us, pardon us.

CELEBRATE

a Sweet New Year
with Israel Bonds

INVEST IN ISRAEL BONDS



DEVELOPMENT CORPORATION FOR ISRAEL
WESTERN REGION
1875 CENTURY PARK EAST SUITE 520
LOS ANGELES, CA 90067
PH: 800.922.6673 FAX: 424.249.3287
EMAIL: LOSANGELES@ISRAELBONDS.COM

This is not an offering, which can be made only by prospectus. Read the prospectus carefully before investing to fully evaluate the risks associated with investing in Israel bonds. Member FINRA.



ISRAELBONDS.COM

High Holidays Services

Sun Sept 29

7:30 pm–Erev Rosh Hashanah

Mon Sept 30

10:00 am–Rosh Hashanah Morning

4:00 pm–Tashlich

Tues Oct 8

7:30 pm–Erev Yom Kippur/Kol Nidre

Wed Oct 9

10:00 am–Yom Kippur Morning

1:30 pm–Children/Family

3:30 pm–Adult Discussion Group

4:30 pm–Minchah/Yizkor

All services, with the exception of tashlich (see below) will be held at:

Mt Sinai Memorial Park

6150 Mt Sinai Dr

Simi Valley, CA 93063

Tickets are not required for tashlich, or for any of the afternoon/evening services on Yom Kippur. For all other services, attendees should be prepared to show their tickets at the door.

Childcare will be available for both Rosh Hashanah and Yom Kippur daytime services, for children aged 7 and under, with holiday crafts and story time.

Attention: Help Us with the High Holidays!

Volunteers are needed to help move prayer books and other materials to Mount Sinai. We will be taking everything over on Fri. Sept. 27th, and doing the actual set-up on Sun. Sept. 29th. Times TBD. We will also need help packing up and moving everything back to CBE on Wed. Oct. 9th.

If you can volunteer, please email Steve Rossman at kirby24601@gmail.com. Don't forget to include which days you can help, and a phone number where you can be notified of times, or any changes that might arise.

Join us for
Tashlich–
Toss your troubles away!

The duck pond at
Rancho Simi Community Park
1765 Royal Ave
Mon Sept 30 at 4:00 pm

Symbolically rid yourself of last year's sins, guilt, and bad feelings and start fresh as we celebrate the new year 5780 together!

Bring your shofar if you have one, and a few handfuls of something to scatter.

Bread is bad for ducks, so here is a list of healthy alternatives:

Uncooked grains

Defrosted frozen peas or corn

Chopped nuts, plain (no salt or flavorings)

Chopped up greens or veggie trimmings

Cut-up grapes

Birdseed



Special Services

Unless otherwise noted, all services take place at CBE
(address on front cover of this newsletter)

Back to School, Back to Shul!

Join us for our "Back to Shul Night" Family Shabbat!

Kids will have a chance to participate in the service, and there will be a special oneg afterward, to start the new year off sweet!



Friday Sept. 6th
7:00 pm



Bring your family and friends to celebrate with our wonderful Jewish community - hope to see you there!

Sukkot & Simchat Torah Celebration!

Fri Oct 18th

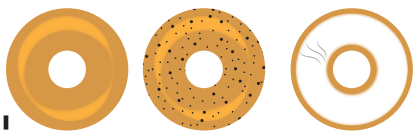


It's a mitzvah to eat in the sukkah-and it's fun, too!

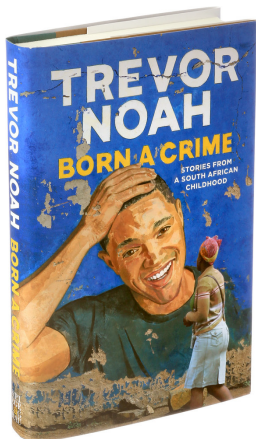
7:00 pm: Potluck Shabbat dinner in the sukkah

8:00 pm: Simchat Torah celebration in the sanctuary

Additional details TBA

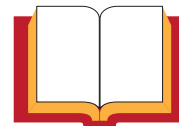


Join us! Sun. Sept. 22nd
Corner Bakery @ Simi Mall



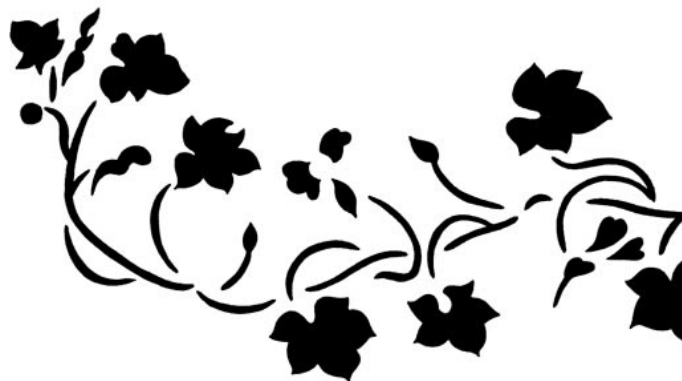
Books & Bagels

This month, we're reading Born a Crime by Trevor Noah, Jon Stewart's hand-picked successor as host of The Daily Show. Born mixed-race into the brutal segregation of Apartheid-era South Africa, this is the fascinating memoir of a mischievous boy who grows into a restless young man, struggling to find himself in a world where he was never supposed to exist.



Do a Mitzvah, would ya?
Help us build the Sukkah!

Morning of Erev Sukkot
Sun Oct 13th
8:30 am



Advertisement

WHERE LEADERS ARE MADE

Simi West Toastmasters

הקשר

- Build your confidence
- Grow as a leader
- Improve your communication and public speaking skills

WHERE: Congregation B'nai Emet
9 W. Bonita Drive
Simi Valley, CA 93065

WHEN: First and Third Tuesdays
of every month!
TIME: 7:15PM

Communication & Leadership

Listening

Jewish-based group, helping people build their communication and leadership skills, while at the same time allowing everyone to explore their spirituality, or discuss topics related to Jewish life, history and culture.

No previous experience necessary. No religious affiliation required. Everyone welcome!!

Would you like to find out more about Toastmasters? You're invited.

Communication

Bring a guest!

תקשורת

For more information contact: Alan Mann, DTM alanmann60@att.net 805-341-3836



Below: Suzanne Crawford Mahler, VP of Social Action (left) delivers the supplies to Principal Kuntz



Mitzvah Collection July:

Thank you to everyone who contributed to our July drive! All of the school supplies were donated to Crestview Elementary. Their principal, Mrs. Nora Kuntz, was very grateful and said that both teachers and students will benefit from our donation.

Mitzvah Collection August:

We are well underway gathering business casual and professional men's and women's clothing and shoes. All donations will go to the Samaritan Center, which helps adults in our community seek employment and get back on their feet.

Upcoming Social Action Events

Feed the Needy

Volunteers, and contributions to replenish the pantry, are welcome for our next Feed the Needy day:

Sat. Sept. 28th

3:30pm-7:00pm

United Methodist Church

2394 Erringer Road, Simi Valley.

To sign up, contact:

Suzanne Mahler at suzanne_crwfrd@yahoo.com or

Chen Mu-Forster at chenmuforster@yahoo.com

A list of items needed will also be available via Sign Up Genius (see CBE website for link).

Upcoming Feed the Needy: Sat. Oct. 26th.

Blood Drive

sponsored by Vitalant

Sun. Nov. 10th

time and other details TBD

Mitzvah Collection September:

Once again, we will be participating in the SOVA food drive. Keep an eye out for the paper grocery bags that will be distributed during the High Holidays.

High Holiday Food Drive

September 29th – October 9th, 2019
29 Elul 5779 – 10 Tishrei 5780

Jewish Family Service of Los Angeles (SOVA) depends on your donations to meet the ongoing hunger crisis in our community. Donations directly benefit the over 7,000 people who visit our pantries each month – people of all ages, races and religions. Please be as generous as you can be – the need is great. Listed below are our most critical needs.

Peanut Butter	Canned Tuna/Fish	Canned or Dry Soup
Rice	Canned Meats	Whole Grain Cereal
	<i>(beef stew, chili w/meat, chicken etc.)</i>	

We also welcome other *non-perishable* foods, personal hygiene items and children's books including:

Dry Beans	Tomato Sauce	Cooking Oil	Razors
Dry Pasta	Canned Beans	Kosher Foods	Deodorant
Dry Milk	Canned Vegetables	Diapers/Wipes	Lotion
100% Juice	Canned Fruit	Soap	Toothpaste
Oatmeal	Canned Pasta	Shampoo/Conditioner	Toothbrushes

Please avoid glass jars, opened or perishable foods.

For more information, please visit www.jfsla.org/SOVA
or call Kathi Dawidowicz at (818) 988-7682 ext. 120

Mitzvah Collection October:

TBD–stay tuned!

Turn your car into a Mitzvah–
Donate it today!

Free pick-up, tax write-off, what's not to like?



Call: 855-500-RIDE or go to
careasy.org/nonprofit/Congregation-Bnai-Emet

Women of CBE

On July 9th, the Women of CBE held our annual ladies' night out, with dinner at the Movie Grill—and a movie, of course! It was a fun event, and we were glad some of the women we don't see during the school year were able to join us once again.

July 13th was the Area Day pre-event, with Pacific District President Dana Adler speaking about the Listening Campaign at our dinner on the roof of the Hotel Erwin in Venice. The following morning, we headed to University Synagogue in Brentwood, which hosted this year's Area Day. It was a day filled with friendship, learning, singing, and—of course—food!

On August 13th we hosted a night of mah jongg. Our teacher was District Area Director Tracy Poirier. Many thanks to her, as well as to the experienced players among our members; with their help, 12 newbies learned the classic game.

On August 18th, the Women of CBE hosted the "donation bags for seniors" table. The bags will be delivered to Jewish residents of local care facilities for the High Holidays.

Be sure to read about our event L'Dough V'Dough, on page 12, and take a look at the great photos!

If you would like to sponsor an oneg for the High Holidays, or if you are able to help set up and serve, please contact RuthAnn or Meridith to sign up.

Check out the fliers on this page and the next for more great events coming up! Hope to see you there!

RuthAnn Rossman
Women of CBE President

Sisterhood Simchas

Happy Birthday, Jill Katell! I am looking forward to celebrating with you!—Lynn Salberg

Celebrating my birthday and Jill Katell's!

Happy anniversary to my son Brian and daughter-in-law Jeanette!

In memory of:
My parents, Ann and Isadore Rumak
Hillary Scolari
Sylvia LeVine

—Cheryl Hirsch



A Mile of Pennies

Equals \$844!
Help us make that mile
to purchase new Torah covers

Empty your pockets!
Your coin jars!
Your wallets!

**Let's feed that giant penny jug in our lobby
as often as we can!**



Be part of our exciting Sisterhood fundraiser
to continue beautifying our temple!

Need a Card? Make it a Donation!

Buy your cards for all occasions from the Women of Reform Judaism, and you'll be supporting youth, education, and special projects in both the USA and Israel through their YES Fund.



Prices start at just \$3.00, and your card will be hand-written and mailed out for you! All you have to do is provide the information, and send a check made out to Women of CBE.

For more information, and to purchase cards, contact Lynne Kelly at lkelmom@aol.com

Women of CBE



The Women of
Congregation B'nai Emet
invite all women to

BREAKFAST AT JILL'S

Tuesday September 10 at 6:30 pm
668 Stonebrook St.
Simi Valley

Dress code
(optional):
comfy or sleepy
time clothes

Please join us at Jill Katell's home
for our annual
paid-up membership dinner & raffle.
Complimentary to all members.
\$10 charge for all non-members.

RSVP to: Kathy Smith at taxiracing@aol.com or
Cheryl Hirsch at Deda5312@aol.com or
RuthAnn at 818-312-7266.

Parking is limited. Carpooling is recommended.

THE WOMEN OF CBE
invite you to our next meeting
IN THE RABBI'S SUKKAH
Tuesday, October 15
6:30 PM
at the home of
Rabbi Michele Paskow
in Thousand Oaks

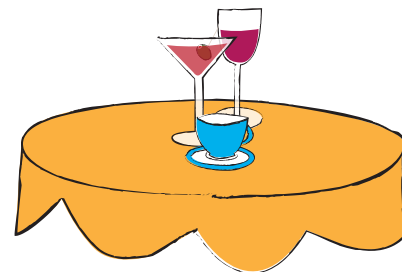
Please bring, if your last name begins with:
A through I, a dessert.
J through P, a dairy or vegetarian main dish.
Q through Z, a salad or side dish.
Please remember, no meat products may be
included in your recipe.

All women welcome! To RSVP and for address:
Email Alice at jafiducia@gmail.com or
Call RuthAnn at 818-312-7266
Parking is limited. Carpooling is recommended.

CALL FOR VENDORS:

HANUKKAH BOUTIQUE

Sunday, November 17
9 AM - 3 PM
Congregation B'nai Emet
9 West Bonita Drive
Simi Valley, CA 93065



Advertisement

Digital Wide & Small Format, Printing, Copying

**Copy
center, Too!**

Tim R. Anderson
Manager

P. O. Box 931
Newbury Park, CA 91319-0931

"Your Printing, Design, and
Photocopying Specialist"

Phone: 805-914-8271
e-mail: tim@copycentertoo.com

For more information, go to:
www.cbeseimi.org/events/event/cbe-hanukkah-boutique/

L'Dough V'Dough



Above, from left: Daniel and Vivian Levy, Bobbie Sion, Ben Bahr, Ian Bahr, Max Doepping, Guest, May Doepping

The CBE Sisterhood and the Los Angeles Museum of the Holocaust (LAMOTH) brought the generations together on Aug. 22nd to bake challah and share stories. The event was a great success, with over 30 people attending! Thanks to Steve Rossman for doing the setting up and breaking down, and to Rabbi Michele for making the arrangements. Much appreciation also goes to Geri, Meridith, Cindy, Cathy Holst, and Ronnye, whose help was indispensable to the smooth progress of the afternoon.



Below: Ben Bahr shows off the tasty results!



Above, back row, from left: Daniel Levy, Max and May Doepping

Front row, from left: Ian and Eva Bahr, Amanda and Jack Rozdial, Ben Bahr



Recent Events

Apples & Honey Faire

Thank you to all the wonderful volunteers who helped make our Apples & Honey Faire a success. We could not have done it without you!

Below: Onlookers swarmed around to learn about beekeeping!

From left: Guest, Judy Epstein, Ken Bahr, Alice Fiducia, Rabbi Michele Paskow, Les Sutton, Beekeeper

Bottom, from left: Beekeeper, Daniel and Vivian Levy, Max Patera, Eva Bahr



Natalie & Maxine
CBE Programs

Left: At the make-your-own-shofar station, Ben Bahr (foreground) entertains (from left) Marty Richter, Cantor Michael Russ, and Daryl Sutton.

Below: Meridith Patera leads a craft activity.



Below: Activities included apple cider tasting, and of course, plenty of food!





Shabbat Under the Stars



Oneg Sponsors

6/28

The Hollander Family, in honor of Michael's birthday

7/5

Carol Rosado, in memory of Earl Rosado

7/12

The Brandler Family, in memory of:

Barbara Primus, Florence Cricco, Sharon Mahler

Bruce Stein, in memory of his mother Lucy Stein, on what would have been her 100th birthday

7/19

The Bahr family, in honor of:

Edith's baby-naming, Ian's adoption

Sheldon & Joan Bergmann, in celebration of their 68th wedding anniversary

7/26

The Poehls family, in honor of Bob & Barbara's 36th wedding anniversary

Lesli Perez, in honor of Gabriel's birthday

8/2

Rachel Utiger, in honor of Dale Utiger

8/9

Miriam Hintz, in memory of Sylvia LeVine

Ronnye Sacks, in memory of her mother-in-law, Ruth Sacks

Jeffrey Wohlner, in memory of his father, Norman Wohlner

The Brandler family, in memory of Walter Brandler

Minnie Anzo, in memory of her father, Joseph Freeman

The Mann family, in memory of Harold Mann

8/16

Carole Fineberg, in memory of Richard Fineberg

The Rossman & Nielsen families, in memory of: Laura Bloch, Dianne Marks

Lois Friedman, in honor of Steve Friedman's 72nd birthday

Meridith Patera, in honor of the birthdays of: Carla Shaw, Max Patera, Bennett Patera

Judy & Eliot Epstein, in honor of Matthew's birthday

8/23

Stacy & Cynthia Nath, in honor of Frieda Bahr's birthday

The Plotkin family, in honor of Jeff & Tami's 40th anniversary

Anne Frankl in memory of Ruth Krakow

8/30

Karen Ribstein, in memory of George Ribstein

The Tepfer family, in memory of Eric Tepfer & Gerhard Heimann

Meridith Patera, in memory of Harry Shaw



Recent Donations

Rabbi's Discretionary Fund

Assisted Living Connections, for CBE High Holidays Choir
Anne Frankl, in honor of the New Year
Keith & Lynne Kelly
Rita Kovar
Meredith Yalenty

Yizkor Book Support

Eden Mortuary and Memorial Park

Yizkor Remembrance Book Fund

Roberta Lester
Sheldon & Joan Liebmann
Sharlene Pass
Karen Troop
Ronnie Zahm

Library Book Fund

Carole Fineberg, in memory of Richard Fineberg

Religious School Fund

Jeff & Arlene Nolke, in memory of Irwin Katz
Meridith Patera
In honor of Brandon Tellio's work in the CBE Library

Memorial Donations

Steven & Gail Altabef, in memory of Steve's father, Harry
Barbara Black, in memory of Sadie Frank
Lawrence & Marsha Kaufman
In memory of Edwin Kaufman
Glen & Debbie Knecht, in memory of Theodore Karoff
Anthony & Laura Luskin
In memory of Abraham Pichkhadze
Guenter & Gail Menke, in memory of Karl Menke
Mitchell & Lynn Salberg
In memory of Steven & Shirley Borrok
Andrew & Catherine Weinstein
In memory of Adrienne Weinstein

Choir Fund

Anne Frankl, in honor of The CBE High Holidays Choir

Social Action: Feed the Needy

Emily & Kristopher Doepping
To the Restock the Pantry campaign

Miriam Hintz, to the Restock the Pantry campaign
Sheldon & Joan Liebmann, in memory of Leon Brody
Bruce Stein, to the Restock the Pantry campaign
In memory of Lainie Stein
Daryl & Les Sutton, to the Restock the Pantry campaign

Programs Fund

CBE Men's Club: Apples & Honey Faire support

Building Improvement Fund

CBE Men's Club: Patio lighting
Ken & Suzanne Epstein, to the bathroom remodeling fund
In memory of Jean Epstein & Paul Kessin,
Ladies' Book Club
(Alice Fiducia, Catherine Holst, Lynne Kelly, Gail
Mittelman, Tami Plotkin, Carol Rosado, Merle Russ,
Bobbie Sion), to the bathroom remodeling fund
In memory of Hilary Scolari, niece of Ronnye Sacks
Sheldon & Joan Liebmann
In memory of Michael Liebmann
Stuart & Wendy Niesen
In memory of Mark Niesen & Renee Gaines
Carol Rosado, in honor of the New Year
Cantor Michael & Merle Russ
In memory of Bessie Keimon
Ronnye Sacks, in honor of the New Year
Amy & Jeffry Tellio, in memory of Michael Liebmann

General Fund

Amazon Smile, Charity of Choice
Erik & Tracie Breiter, in honor of the New Year
Ronald & Chen Mu Forster, in honor of the New Year
Richard & Julie Klein
Car donation through Charitable Adult Rides
Shirley Maccabee, in honor of the New Year
Michael & Julie Bienenfeld Mutal
In honor of the New Year
Bob & Barbara Poehls, in honor of the New Year
Steve & RuthAnn Rossman

Other Donations

Eric & Stacy Cohen
Two antique prayer books from 1850s Europe
Brandon Tellio
Electric pencil sharpener for the Religious School

Recent Donations



MEMORIAL PARKS AND MORTUARIES

A heartfelt thank you to General Manager Howard Kaplan and the Grants and Allocations Committee at Mount Sinai Memorial Parks and Mortuaries for their very generous grant, which will help us bring our bathrooms into ADA compliance. Their support of Congregation B'nai Emet is greatly appreciated!

Current Needs

Health & Safety

AED: Automated External Defibrillator

Prayer Books

Shabbat Siddurim, Standard print

Shabbat Siddurim, Large print

Etz Hayim Torah & Commentary

Legacy Giving

As you update your Will or Trust, we hope you will remember CBE as a beneficiary. President Les Sutton or Treasurer Ryan Richmond will be happy to work with you to help set this up. Make CBE's future part of your legacy, l'dor v'dor: from generation to generation.

Cemetery Program

Preparing for your own passing may be difficult, but it is vitally important to make your wishes known and take care of arrangements now, both for your own peace of mind, and for the sake of loved ones who would otherwise have to make stressful decisions at a highly emotional time. Congregation B'nai Emet has partnered with Mount Sinai Mortuary to help temple members make pre-need arrangements for cemetery property. Take advantage of this opportunity to secure your resting place, while also supporting CBE.

For more information, contact RuthAnn Rossman via the Temple office. Or, speak directly with Josh Ryan, Advance Planning Representative at Mount Sinai Mortuary, and identify yourself as a CBE member: (805) 306-6411 or jtryan@mountsinainparks.org. Absolutely no obligation.

Jewish Education

Sunday School starts Sept. 8!

Judaica High starts Sept. 9!

Download the full school calendar at:
cbesimi.org/education/religious-school/

Advertisement



Lend your support while gearing up for school

Shop at smile.amazon.com and Amazon donates.

amazonsmile

Below: Students celebrated Israeli Independence Day by creating collage flags with their wishes for Israel.



Congregation B'nai Emet presents...

Beginning Hebrew for Adults

A 5-week course for those who want to learn the language, or even start working toward a Bar- or Bat-Mitzvah

Just \$36 per person for the entire course!

When:
Wednesday evenings,
beginning Oct. 16th
7:00pm-8:30pm

Where:
A private home in
Thousand Oaks



For more information, and to register, contact Cindy at
info@cbesimi.org, or (805) 581-3723

Birthdays

Judy Epstein	9/1	Karen Troop	9/30
Mitchell Salberg	9/1	Vivian Levy	10/5
Debbie Knecht	9/12	Gail Shenkman	10/6
Gabe Katell	9/15	Lori Sherden	10/7
Justin Ranelletti	9/15	Catherine Holst	10/17
Madison Mortimer	9/18	Thomas Sumner	10/18
Maxine Seidel	9/18	Bobbie Sion	10/25
Edith Bahr	9/25	Cherie Bordo	10/28
Chen Mu-Forster	9/27	Kathy Smith	10/28
Zoey Adams	9/29	Shari Schultz	10/31
Michael Mittelman	9/29		

Anniversaries

Eric & Erica Weiner	9/4	6th
Alan & Linda Mann	9/9	11th
Steve & RuthAnn Rossman	9/12	47th
Maxine Seidel & Thomas Sumner	9/29	6th
Eric & Michelle Levine	10/7	17th
Todd & Lindy Schneider	10/11	37th
Jerry & Marla Bergmann	10/12	38th
Tom & Bonnie Cleantis	10/12	4th
Emily & Kristopher Doepping	10/12	16th
Wayne & Shari Schultz	10/18	43rd
Larry & Cindy Shilkoff	10/19	38th
Mitchell & Lynn Salberg	10/20	33rd
Michael Mutal & Julie Bienenfeld	10/24	19th
Les & Daryl Sutton	10/24	42nd
Seymour & Rochelle Botan	10/26	43rd

B'nai Mitzvot

Shalom! My name is Justin Ranelletti! I am a seventh grader at Hillside Middle School in Simi Valley. I live with my mom, dad, and older sister. My family and I have been members at CBE since I was 3. My hobbies are playing sports, especially baseball, video games, and hanging out with my friends.



My Bar Mitzvah project is collecting donations for the Crohn's and Colitis Foundation. The mission of the foundation is to cure Crohn's Disease and Ulcerative Colitis, which are collectively known as inflammatory bowel disease. I was diagnosed with Crohn's at age 8 and I'm raising money for this foundation to help kids and people like me throughout the world. I'm very excited to take a new step into my Jewish Adult life.



Shalom. My name is Joseph Davidhoff. I live in Simi Valley with my parents, Evan and Connie. I was born in Woodland Hills, and have lived in Simi Valley my whole life. I am currently attending Santa Susana High School in the 9th grade. My hobbies are swimming, drawing, and video games. I have participated in volleyball, basketball, and the

debate team while in Middle School, and I hope to be an Artist someday.

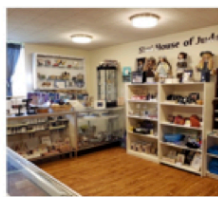
My Bar Mitzvah is very important to me, because I am dedicating it to my Grandfather, who could not be here, but it meant everything to him. I am very excited to take a new step into my Jewish adult life, and look forward to volunteering and helping others at the religious school.



Advertisement

SIMI'S HOUSE OF JUDAICA

**Located
at CBE**



**For all
your
Judaica
needs!**

Call (805) 581-3723
for more
information,
hours of operation
& holiday
boutiques

Holiday items, Shabbat Needs,
Bar/Bat Mitzvah Registry
Huge Selection of Jewelry
Kipote & Tallises
Gifts for All Occasions
Mah Jongg Goodies
Greeting cards, Personalized kippot, &
Invitations by special order

Jahrzeits

Dixie Cohen	9/1	Elul 21	Isaak Pichkhadze	9/19	Tishrei 10
Lynn Marlow	9/1	Elul 21	Ester Rabinek	9/19	Tishrei 10
Gerhard Heimann	9/2	Elul 22	Audrey Gramowitz	9/20	
Donald J. Schwartz	9/2	Elul 22	Ann Schwartz	9/20	Tishrei 11
Armin Hollander	9/3	Elul 23	Edith Diane Weiner	9/20	Tishrei 11
Sheri Enright	9/4		Julius Brandler	9/24	Tishrei 15
Joseph Melnick	9/4	Elul 24	Lainie Stein	9/24	Tishrei 15
Faina Vineberg	9/4	Elul 24	Irvin Charton	9/25	Tishrei 16
Jean Epstein	9/5		Mary Finkelstein Michel	9/25	Tishrei 16
George Ribstein	9/6		Joseph Berkowitz	9/26	Tishrei 17
Philip Landau	9/7	Elul 27	Roslyn Schiff	9/26	Tishrei 17
Herman Leon	9/7	Elul 27	Carol Winner	9/27	Tishrei 18
Anne Sussman	9/7	Elul 27	Shirley Hoffberg	9/29	Tishrei 20
Annette Beezy	9/8	Elul 28	Jeanette Ilowitz	9/29	Tishrei 20
Evelyn Levin	9/8	Elul 28	Gertrude Cohen	10/1	Tishrei 22
Selma Wollman	9/8	Elul 28	Joseph Sweet	10/1	Tishrei 22
Hyman Chait	9/9	Elul 29	Walter Ascher	10/2	Tishrei 23
Harold Ducker	9/9		Martin Dubin	10/2	Tishrei 23
Elsa Fleischmann	9/9	Elul 29	Richard Glassman	10/3	Tishrei 24
David McMoyler	9/9	Elul 29	Anne Leibl	10/5	Tishrei 26
Meyer Rabinek	9/9	Elul 29	Jack Volkerts	10/5	Tishrei 26
Oscar Bromberger	9/10		Wilbert Melnick	10/6	Tishrei 27
Cathy Mittelman	9/10	Tishrei 1	Dorothy Tucker	10/7	Tishrei 28
Jennie Sylvia Lindenbaum	9/12	Tishrei 3	Erna Ascher	10/9	Tishrei 30
Douglas A. Millings	9/12	Tishrei 3	Edythe Anita Friedman	10/9	Tishrei 30
J.G. Neugroschl	9/12		Miriam Landau	10/9	Tishrei 30
Rudolph Edelstein	9/13		Marian Karoff	10/10	Heshvan 1
Raquel Goldstein	9/13	Tishrei 4	Frances Weiss	10/10	Heshvan 1
Sylvia Selbst	9/13	Tishrei 4	Morris Yasskin	10/11	Heshvan 2
Ann Schneider	9/15	Tishrei 6	Moris Goldstein	10/12	Heshvan 3
Paul Charton	9/16	Tishrei 7	Sam Farkas	10/13	Heshvan 4
Louis Karoff	9/16	Tishrei 7	Regina Rachel Mann	10/14	Heshvan 5
Gerri Katz	9/16	Tishrei 7	Betty Yager	10/15	Heshvan 6
Mayer Yaskiel	9/16	Tishrei 7	Gerald Jerome York	10/15	Heshvan 6
Morris Feldman	9/17	Tishrei 8	Benno Epstein	10/16	
Karel Venhuizen	9/17	Tishrei 8	Saul Kaufman	10/16	Heshvan 7
Harry Wollman	9/17	Tishrei 8	Shoshanah Copelof	10/18	Heshvan 9
Sandford Scharf	9/18		Daniel C. Gilson	10/18	Heshvan 9
Jacob Brenwasser	9/19	Tishrei 10	Jodi Jawitz	10/18	Heshvan 9
Margaret Brenwasser	9/19	Tishrei 10	Thomas Farago	10/19	Heshvan 10
Judy Epstein	9/19	Tishrei 10	Gabriel Seidel	10/19	Heshvan 10
Judith Gail Karoff	9/19	Tishrei 10	Rose Bercow	10/20	Heshvan 11

Yahrzeits

Lewis Howard	10/20	Heshvan 11
Jack Nadler	10/20	Heshvan 11
Nedra Trachtenberg	10/20	Heshvan 11
Diana Feldman	10/21	Heshvan 12
Ida Luger	10/21	Heshvan 12
Jack Nadler	10/21	Heshvan 12
Hilda Mazin	10/22	
Luis Albert Rosado	10/22	Heshvan 13
Stuart Stern	10/22	Heshvan 13
Emanuel Cohen	10/23	Heshvan 14
William Priest	10/23	Heshvan 14
Ron Gutierrez	10/25	Heshvan 16
Ethel Albert	10/26	Heshvan 17
Carl Norman Kitt, Sr.	10/26	Heshvan 17
Joel Ribstein	10/26	
Reuben Lewis Mazin	10/27	
Helene Bromberger	10/28	
Hermann Bromberger	10/28	
Samuel Bromberger	10/28	
Sylvia Charnick	10/30	Heshvan 21
Ann Miller	10/30	Heshvan 21
Max Satin	10/30	Heshvan 21
Gerald B. Hasson	10/31	Heshvan 22
Simon Levy	10/31	Heshvan 22
Muriel "Cookie" Stern	10/31	

Observing Yahrzeits at CBE

A yahrzeit is the anniversary of a death. It is traditional to light a 24-hour memorial candle in your home, at sundown on the evening before the date of the yahrzeit.

Names of the remembered are read out at Shabbat services on the Friday night immediately preceding the yahrzeit date. Friends and family attend this service, and participate in the recitation of the Mourner's Kaddish. Many people also make a donation to the temple in honor of the remembered, as a mitzvah on behalf of a loved one who is no longer here to do so.

Those who have yahrzeits on file with the Temple office will receive reminders before the dates. We ask for your help in keeping this information current and complete. To check the current yahrzeit information on file, or to make any additions or corrections, please contact the office.

Condolences

Our condolences to:

Family and friends of Holly York, longtime CBE and Sisterhood member.

Family and friends of Sylvia LeVine, longtime CBE and Sisterhood member.

Michael Hollander and Suzanne Epstein on the passing of their cousin, Paul Kessin.


Dale and Jesse Charnick on the passing of Dale's sister, Alissa Taff.

Yehi zichronom l'vrachah:

May our memories of them be for a blessing and an inspiration.

May all who mourn find comfort.

Advertisement




**YOUR FAMILY IS
PRECIOUS
TO YOU**

Plan ahead with a gift of love for
those you care about most.

Congregation Bnai Emet Advance Planning Representatives

<p>Eric Frank 805-306-6410 efrank@mountsinaiparks.org</p>	<p>Josh T. Ryan 805-306-6411 jtryan@mountsinaiparks.org</p>
---	---



MEMORIAL PARKS AND MORTUARIES

Simi Valley FD 1745 6150 Mount Sinai Drive, Simi Valley CA 93063
Hollywood Hills FD 1010 5950 Forest Lawn Drive Los Angeles CA 90068
www.mountsinaiparks.org 800-600-0076
Dedicated to the entire Jewish community as a service of Sinai Temple of Los Angeles.



To purchase a leaf for our Tree of Life in memory of a loved one, please contact the Temple office.

Schedule of Services, Candle lightings, and Torah Portions

(All candlelighting times are for Simi Valley)

Date	Candle Lighting	Service	Torah Portion
Sept.6/ 7 Elul	6:55PM	Family Service 7 PM	Shoftim - Deuteronomy 16:18-21:9
Sept. 13/ 14 Elul	6:45 PM	Shabbat Service 8 PM	Ki Teitzei - Deuteronomy 21:10-25:19
Sept. 20/ 21 Elul	6:36 PM	Shabbat Service 8 PM	Ki Tavo - Deuteronomy 26:1-29:8
Sept. 27/ 28 Elul	6:26 PM	Shabbat Service 8 PM	Nitzavim - Deuteronomy 29:9-30:20
Sept. 29/ 1 Tishrei	6:23 PM	Erev Rosh Hashanah 7:30 PM	
Sept 30		Rosh Hashanah 10 AM	
Oct. 4/ 6 Tishrei	6:16 PM	Family Service 7 PM	Vayeilech - Deuteronomy 31:1-31:30
Oct. 8/ 9 Tishrei	6:11 PM	Kol Nidre 7:30	
Oct. 9		Yom Kippur 10 AM	
Oct. 11/ 13 Tishrei	6:07 PM	Shabbat Service 8 PM	Ha'Azinu - Deuteronomy 32:1-32:52
Oct. 18/ 20 Tishrei	5:58 PM	Shabbat/Sukkot: Potluck 7 PM, Service 8 PM (see p.7)	
Oct. 25/ 27 Tishrei	5:50 PM	Shabbat Service 8 PM	Bereshit - Genesis 1:1-6:8

GO TO OUR WEBSITE: cbesimi.org

OR VISIT OUR FACEBOOK PAGE- <https://www.facebook.com/cbesimi/> TO TO SEE OUR ACTIVITIES AND WAYS TO SUPPORT OUR TEMPLE
CONTACT CINDY TO RECEIVE WEEKLY EMAIL UPDATES. <mailto:info@cbesimi.org>



Congregation B'nai Emet
P.O. Box 878
Simi Valley, CA 93062-0878

DATED MATERIAL

—Please do not delay delivery—