



# Chai Lites



Congregation B'nai Emet  
9 West Bonita Dr.  
Simi Valley, CA 93065  
Phone: 805-581-3723  
info@cbesimi.org  
www.cbesimi.org

Find us on social media!



www.facebook.com/cbesimi/



@cbesimi

Spring 2023  
Adar-Nisan-Iyar-Sivan 5783  
Vol. 44, Issue 3

Dear Friends,

We've just finished celebrating Purim, and Passover will be here the first week of April (no fooling)! I've never thought of these two holidays together or side by side; they are seemingly so different from one another. Purim is silly, loud, and about letting go. Passover seems to be the opposite: yes, of course there is the Seder with plenty of food, but there are serious restrictions on what and how we eat. While Passover celebrates freedom, it's definitely not about "letting go" in the way Purim is. There's no all-out abandon; it's a more contemplative, intensive holiday.



And yet, on a more fundamental level, these two holidays do share common threads. Even the pithy "They tried to kill us. We survived. Let's eat." adage applies here. It's significant that courageous women play major roles in the stories of both holidays, bringing about release from terrifying bullies. Esther, of course, is the heroine of the Purim story. The whole start of the Exodus story is propelled by women defying Pharaoh: the midwives who deliver Israelite babies; Moses' mother Yocheved, who doesn't kill her child; Miriam, who keeps an eye out for her brother; and even Pharaoh's own daughter, who rescues Moses and dares to bring him home!

There are two more profound similarities between these seemingly disparate observances. In essence, both Purim and Passover direct our thoughts to evil in our world, and how we can work to combat it. Both stories focus on the singling out of an "other" (which happens to be us), and the decision that this minority "other" must be destroyed in order to alleviate society's problems. Also, on both holidays we celebrate triumphing over these malicious villains – characters with malevolent intent, who abuse their power and think that they have the right to kill and annihilate us (and, by extension, other vulnerable people). Recognizing our survival is, of course, a reason to celebrate, but beyond that, it also gives us hope in the darkest and most challenging of times. These stories give us strength to keep alive our heritage and traditions, not to give in to bullies, and to cherish freedom of choice and religion.

It's time to prepare ourselves for Pesach by reading through some of the prayers in the Haggadah, thinking about what it means to have rights and freedom, and of course, getting the bread-free meals ready for the Seder and the week of Pesach. In other words, it's crunch-time! I'm very excited to announce that we'll be having an in-person Seder at the Temple, after three years via Zoom! If you'd like to participate, just let me know and I will have something special for you to read or sing.

Chag samayach – Happy Passover!

Shalom u'vrachah,  
Rabbi Michele Paskow

## Board & Affiliates

Michele Paskow <i>Rabbi</i>	Meridith Patera RuthAnn Rossman <i>Sisterhood Co-Presidents</i>
Michael Russ <i>Cantor</i>	Cindy Shilkoff <i>Temple Office Admin. Dir. of Communications</i>
Steve Rossman <i>President</i>	Lindy Schneider <i>Preschool Director &amp; Office Manager</i>
Brian Marcus <i>Executive VP</i>	Meridith Patera <i>Dir. Emerita of Jewish Education</i>
Steven Altabef <i>Treasurer</i>	Melissa Cohne <i>Religious Sch. Lead Teacher</i>
Debra Schranze <i>Secretary</i>	Jill Katell <i>Religious Sch. Teacher</i>
Alan Mann <i>Financial Secretary</i>	Suzanne Epstein <i>Communications Editor</i>
Tamara Patera <i>VP, Communications</i>	Bobbie Sion <i>Gift Shop Admin.</i>
Brian Marcus <i>VP, Fundraising</i>	Open Position <i>Choir Director</i>
Ron Mittelman <i>VP, Membership</i>	Ben Bahr Ken Bahr Michael Hollander Max Patera Steve Rossman <i>Tech Team</i>
Emily Doepping Erica Weiner <i>Co-VPs, Programs</i>	
Frieda Bahr <i>VP, Religious Education</i>	
Suzanne Mahler <i>VP, Social Action</i>	

Minutes of CBE board meetings are available upon request.

→ → → → → → →

**Turn your car into a Mitzvah—  
Donate it today!**

Free pick-up, tax write off—what's not to like?



**Call 855-500-RIDE or go to**  
[careasy.org/nonprofit/Congregation-Bnai-Emet](http://careasy.org/nonprofit/Congregation-Bnai-Emet)

← ← ← ← ← ← ←

## Contents

Rabbi's Greeting	1
President's Greeting	3
Upcoming Events	3
Women of CBE	6
Social Action	8
CBE Youth	10
Recent Events	11
Mazel Tov!	13
Recent Donations	14
Yahrzeits	17
Israel at 75	20

Please send any temple mail or donations to:

Congregation B'nai Emet  
PO Box 878  
Simi Valley, CA 93062-0878

If you or someone you know would like to receive our weekly communications, go to our website ([cbesimi.org](http://cbesimi.org)), scroll to the bottom of any page, and look for the simple sign-up form. Alternatively, you can email [info@cbesimi.org](mailto:info@cbesimi.org) with your request. If you think you are already signed up, but are not receiving them every Wednesday morning, please check your Spam folder.

### Become a Chai Lites Sponsor!

A great way to promote your business while also supporting CBE! Contact the temple office at [info@cbesimi.org](mailto:info@cbesimi.org) for more information.

Ad Size	Single Issue	Full Year (4 Issues)
Business Card	\$45.00	\$100.00
1/4 page	\$65.00	\$165.00
1/2 page	\$95.00	\$265.00
Full page	\$130.00	\$420.00



# President's Greeting



Shalom Congregants,

The temple Board elections are approaching rapidly. In my opinion, volunteers earn a special place in our hearts. Volunteering for a year (or three) on the CBE Board will certainly

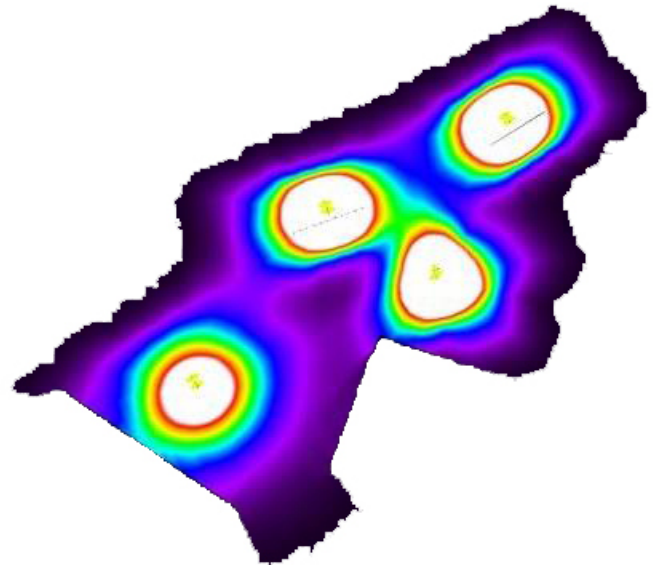
earn you a special place in my heart! And, as a member of the Board, you'll be invested in decisions that affect all of us at the temple, now and in the years to come.

The new lights for the parking lot are taking much longer than originally anticipated, due to the complexity of getting permits through the city, but some work has already been done:

- Bore holes have been drilled under the parking lot, and conduit inserted.
- Holes for the piers (the footings for the actual light poles) have been dug, and conduit has been drilled into these holes.
- The city required a photometric study, which has now been done. A photometric study maps out current light levels in the area in question, and simulates what the light levels will be when the new lights are installed (see an example to the right). This helps ensure that the lighting will be placed correctly and of the right intensity to provide sufficient illumination, but also checks to make sure that spillover will not adversely affect the surrounding area (e.g., neighbors, wildlife, etc.).
- The city also required engineering plans for the piers, which have now been submitted.
- A concrete contractor has been chosen.

After the permits are all approved, volunteer help will be needed to dig the trench for the conduit to be laid underground. The more people that participate in this, the faster it will go. This is another chance to be of service to your fellow and future congregants.

Making improvements to our facilities is one of my favorite things about being President of CBE—as you all know, I am a hands-on kind of guy! One of my least favorite duties is asking for money, but improvements and programs have a price. Although your generosity up to this point has helped us make progress, we are still falling short of the amount we need to see us through the end of the year. My request to you is that you donate, and direct the donation to the General Fund, so that it can be used for the unglamorous but essential bills that keep us up and running.



If you need a reminder of what CBE means to so many, check out the photos in the following pages. In particular, it is a joy to see that we are now offering activities for our pre-teens and teens. It is also important for us to be a positive presence in our larger community, which we have done this past winter with our highly popular Community Menorah Lighting, our participation in the Anti-Defamation League's Walk Against Hate, and our donations to local charities. Read on for details about all this and much more!

*Continued on next page*

## President's Greeting (continued)

*President's Greeting, continued from pg. 3*

Coming up, we have both fun and somber events planned. In April, brush up your act and help us put on a great show for CBE's Got Talent! Also in April, we will be taking a group trip to the Reagan Library to see the special exhibition *Auschwitz: Not long ago. Not far away*. Tickets are still available on the CBE website, so sign up for this difficult but important experience. Afterwards, for those who wish to attend, there will be a chance to eat and discuss at Villa La Pasta. And for more eating in a more joyous setting, the in-person Community Passover Seder returns this year! Watch the website and your CBE Weekly News emails for more details.

I hope to see you at our upcoming events and services, and that you will invite family and friends as well. We welcome everyone to participate in services, whether on zoom or in person, regardless of ethnicity, orientation, disability, or age. We are very proud of our inclusive community.

If you have questions, suggestions, or anything else you wish to discuss, I am always available to listen.

See you at temple!  
Steve Rossman  
Temple President

## Upcoming Events

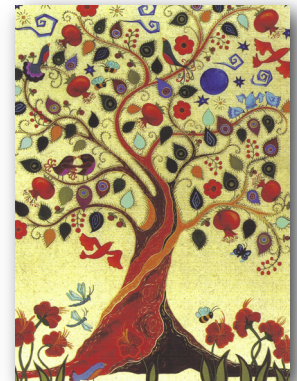


Multi-Access Friday  
**Shamrock Shabbat:**  
Jewish Views on Life and Luck  
Fri. March 17th 2023  
7:00 pm  
In-Person & on Zoom!

### *Tribute Cards from Women of CBE*

#### **Need a Card? Make it a Donation!**

Buy your cards for all occasions from WCBE, and you'll be supporting both our Sisterhood and the Women of Reform Judaism's youth education efforts and special projects, in both the USA and Israel, through their YES Fund.



Prices start at just \$3.00, and your card will be hand-written and mailed out for you! And now, you can buy online! Get the beautiful discontinued designs shown here and more, before they are gone! Go to [www.cbesimi.org/support-the-sisterhood](http://www.cbesimi.org/support-the-sisterhood) to see all available card designs and additional details. Contact Lynne Kelly at [lkelmom@aol.com](mailto:lkelmom@aol.com) with any questions.

### Advertisement

## *Simi House of Judaica*



*Large selection, great variety ~ gifts & supplies for all occasions*

Located at  
Congregation B'nai Emet  
9 W. Bonita Dr.  
Simi Valley, 93065  
Call (805) 581-3723  
for hours of and more information


Jewelry  
Greeting cards  
Personalized kippot  
Bar/Bat Mitzvah registries  
Invitations by special order  
Gift cards for Amazon, gas stations, & many more!



# Upcoming Events

**Auschwitz**  
 Not long ago. Not far away.

Group  
Visit  
to the  
Exhibition



**Sun. April 2nd at 2:00 PM**

Join us for dinner and discussion  
afterward: Viva La Pasta, 4:30 PM

Purchase tickets at [cbesimi.org](https://www.cbesimi.org)

- Adult: \$28
- Senior (62+): \$25
- Tour is not Docent-led; audio guides provided.
- Ticket price includes the permanent exhibitions.
- This exhibition is not recommended for children under the age of 12.
- WCBE has generously agreed to sponsor up to 8 CBE students by paying \$11 toward each Youth ticket. (Additional financial assistance may be available upon request.)

- College Student: \$11
- Youth (<18): \$21

Buy tickets here: <https://www.cbesimi.org/product-page/tickets-for-group-trip-to-auschwitz-exhibition>

## Community Passover Seder

**Sat. April 8th**  
 Seder at 5:30pm, Dinner at 6:30pm

The in-person Seder is back!

- Adult: \$40 • Child (age 5-12): \$30
- Child (under 5): Free

Ticket price includes traditional meal of matzah ball soup, chicken, and sides.

Buy your tickets by **March 24th** at  
<https://www.cbesimi.org/event-details/community-passover-seder>



Buy tickets here: <https://www.cbesimi.org/event-details/community-passover-seder>

**CBE'S  
GOT TALENT!  
APRIL 29 2023**

**GOT TALENT?**  
**SIGN UP AND SHOW OFF YOUR STUFF!**  
**DON'T LIKE THE SPOTLIGHT?**  
**COME CHEER FOR YOUR FRIENDS AND FAMILY!**

**6:00 PM: BUFFET DINNER & CASH BAR**  
**7:00 PM: THE BIG SHOW!**

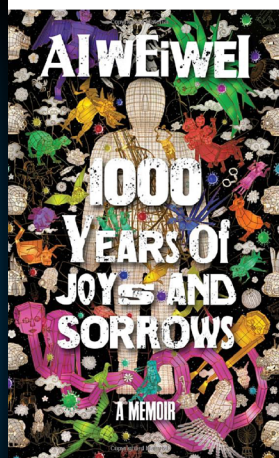
**ADULT: \$50 ~ CHILD: \$25**  
**TICKET PRICE INCLUDES ONE DRINK**

**BUY TICKETS AND SIGN UP AT [CBESIMI.ORG](https://www.cbesimi.org)**

Buy tickets here: <https://www.cbesimi.org/event-details/cbes-got-talent>

Sign up to perform here: <https://www.cbesimi.org/calendar>

## Books AND Bagels



**Sun. May 7th, 9:30 am, on Zoom**

### **1000 Years of Joys and Sorrows: A Memoir**

by Ai Weiwei

Ai Weiwei's father, Ai Qing, was China's most celebrated poet – until the Maoist regime branded him a rightist, and he and his family were banished to the desolate “Little Siberia,” where Ai Qing was sentenced to hard labor. Ai Weiwei recounts his childhood in exile, and his difficult decision to leave his family to study art in America, where he befriended Allen Ginsberg and was inspired by Andy Warhol and Marcel Duchamp. With candor and wit, he details his return to China and his rise from artistic unknown to art world superstar and international human rights activist—and how his work has been shaped by living under a totalitarian regime.



To join Books and Bagels, email Barbara Poehls at [bbpoehls@gmail.com](mailto:bbpoehls@gmail.com)

# Women of CBE

Dear Friends,

Over the past few years, we have been honored to lead the Women of CBE Sisterhood as presidents or co-presidents. With the help of our amazing board, we weathered the lockdown period by having monthly meetings on Zoom for the entertainment and enlightenment of our members and others, with guest speakers and fun programs, including Sukkot and Hanukkah parties and Tu BiShvat seders.

We continued our ongoing fundraising efforts with Shabbat donations to the oneg fund, gift card sales, and tribute cards. We even had some gift shop sales! We held virtual fun and fundraisers such as the Hanukkah Boutique and had remarkably successful Car Rallies and restaurant fundraisers.

We've continued to make generous donations to CBE, Feed the Needy, CBE Religious School, Israel, and various community and national causes, such as fire, flood and earthquake victims all over the US and the world. We are monthly donors to Women of the Wall, which fights for religious equality for Jewish women in Israel.

We have strengthened our ties to the Women of Reform Judaism and to the WRJ Pacific District, supporting them financially and through in-person participation.

Thank you for all your support over the years. We're very excited to see what our wonderful new board will accomplish. We plan to remain active as board members and contributors to see our remarkable sisterhood go from strength to strength.

Please join us. WITHOUT YOU WE ARE ONE WOMAN SHORT!

In sisterhood,  
Meridith Patera & RuthAnn Rossman  
Co-Presidents until May 2023



*Above: WCBE members gather at the home of Lois Friedman to make holiday luminaries (below) at Hanukkah Craft Night.*



Did you know? You can now submit oneg sponsorship donations online at <https://www.cbesimi.org/support-the-sisterhood>

If you prefer the post, please send Sisterhood mail & donations to:  
Women of CBE, c/o Meridith Patera  
15050-C Campus Park Drive  
Moorpark, CA 93021



## Recent WCBE Events: TuBishvat Seder

Early in 2023, the Women of CBE gathered for the annual TuBishvat Seder, a celebration of female contributions to Jewish culture and community. Through symbols, songs, and conversation, (plus, of course, food!) the ladies enjoyed this newer tradition that focuses on the female.





# Social Action

## Monthly Mitzvah Collection

### March: Spring Cleaning

Clean out those kitchen cupboards and hall closets and donate new or gently used small housewares. Proceeds will go to Alpine Attic Thrift Stores, a local faith-based operation, benefiting their camp and conference center.

Donations may be placed in the bin located in the front lobby of CBE, or contact Suzanne Mahler at 805.404.3301 or [suzanne\\_crwfrd@yahoo.com](mailto:suzanne_crwfrd@yahoo.com) to schedule a porch pickup.

### Feed the Needy

Feed the Needy served 16 individuals in February, with a total of 30 meals given (including seconds).

### Next Feed the Needy:

Saturday, March 25th, 2023.

Simi Valley United Methodist Church  
2394 Erringer Rd.  
Simi Valley, CA 93065

### February Blood Drive

The February 2023 blood drive collected 14 pints, which will serve a total of 26 patients. Next blood drive will be scheduled for June.

Suzanne Mahler  
VP, Social Action



*Above: CBE's donation of warm clothes to Second Story.*

*Below: Suzanne Mahler (on the right, in purple) with the Second Story team!*





## Anti-Defamation League Walk Against Hate

The CBE Simi Cares team participated in the ADL's Walk Against Hate in February 2023, raising \$300 to support the work of the Anti-Defamation League in its fight against antisemitism and all other forms of hatred. CBE is proud of our commitment to being an inclusive community!



*Left: Team CBE brought a cultural craft to share. Spencer Mahler demonstrates how to paint a hamsa. Handouts were available in English and Spanish to explain the meaning of the symbol.*

*Below: Team photo!*



*Right: Suzanne Epstein was interviewed by NPR!*

*Below: LGBTQ+ Jewish Pride!*





## Recent CBEY Events: Teen Leadership Connection

In January and February of 2023, the teens of CBE were schooled in how to argue with each other – respectfully! Based on the Mahloket (disagreement) Matters program from the Pardes Institute in Jerusalem, the group met one evening a week for five weeks at fun locations, to learn from Rabbi Michele and the CBE teachers how to navigate multiple view points as the Talmudic rabbis did. The program culminated in dinner and a mock Sanhedrin (rabbinic court), so the participants could flex their new skills.



*Below: Some of the ladies attempt to recreate a human Star of David, with Rabbi Michele orchestrating. Well, at least everyone got a good laugh out of it!*



*Venues included a video game arcade (top) and a bowling alley (above and right).*





## CBE Youth

### Upcoming Bar Mitzvah: Dante Kritzer

Dante is a seventh-grader at Hillside Middle School, having moved to Simi Valley with his family from Mission Hills in February 2020. He's a Junior Honors Student and member of several social clubs at school.



Dante is a fun loving, energetic young man who keeps himself active. He loves playing video games and hanging out with his two older brothers and seven cousins, who all live nearby. He enjoys weekly family night dinners, telling jokes (what 12-year-old boy doesn't enjoy a good fart joke?), and watching TV and movies. His favorites include anything Marvel (he has an extraordinary ability to recite minute details of the plots of every Marvel film and where they fit within the grand scheme of the MCU), Adam Sandler films, Young Sheldon, and Daredevil. He loves attending events and camping with his Boy Scout troop, where he is currently a Tenderfoot Scout.

He is looking forward to celebrating his Bar Mitzvah on April 15th and hopes everyone can join him.

## Recent Events

### Community Menorah Lighting

Our Community Menorah Lighting was as popular as ever in 2022, with treats, crafts for the kids, accordion music, and singing. Many thanks to the faithful Sandy Miller, who employed his gift of gab to drum up some sponsorship from local businesses. Gratitude also goes to the Rossmans for hauling the big menorah (and a lot of other supplies); to the Co-VPs of Programs, Emily Doepping and Erica Weiner; and to all the other volunteers who helped make the event a success!





## Recent Events

### Purim-Palooza: She Will Rock You!



The congregation turned out in costume to hear Suzanne Mahler and Cantor Russ sing Purim parodies of songs by the band Queen (get it?!). The service was followed by a festive plethora of treats, served up in style by Ruth Ann Rossman and the Women of

CBE, complete with many dozens of delicious "gnome-antaschen" baked by Tami Plotkin (above, wearing her gnome hat). To cap off the mayhem, the kids braved the chilly evening to take a whack at what turned out to be a very tough piñata – but they cracked it in the end!

## Birthdays

Kyle Cohne	3/2		Glen Knecht	4/28	
Kathy Alfred	3/3		Renee Kieselbach	4/30	
Jerry Bergmann	3/3		Emily Doepping	5/5	
Michael Mutal	3/3		Kenya Edelhart	5/6	21
Tamara Patera	3/4		Minnie Anzo	5/8	*99*
Suzanne Mahler	3/11		Ronnye Sacks	5/9	
Vanessa Cohne	3/18	13	Carol Rosado	5/10	
Amy Liebmann Tellio	3/18		Dawn Rozdial	5/10	
Marla Bergmann	3/19		Keith Kelly	5/11	
Wayne Schultz	3/19		Isaac Levy	5/15	
Sheldon Liebmann	3/22		Belinda Geiger	5/16	
Merle Russ	3/24		Paige Esqueda	5/17	11
Dr. Jesse Esqueda	3/29		Daniel Levy	5/17	16
Dr. Les Sutton	3/29		Alan Mann	5/17	
Kathy Alfred	3/31		Paul Venhuizen	5/19	
Orna Adams	4/5		Ruth Ann Rossman	5/22	
Ian Bahr	4/6	16	Meridith Patera	5/23	
Aiden Cohne	4/7	18	Danielle Eglick	5/25	
Todd Schneider	4/11		Arlene Sedlack	5/25	
Maximus Doepping	4/13	17	Zelda Shabah	5/25	2
Cameron Kritzer	4/13	18	Jeffry Tellio	5/25	
Dr. Ken Epstein	4/14		Geri Brandler	5/26	
Rabbi Michele Paskow	4/15		Steve Rossman	5/26	
Dante Kritzer	4/16	13	Jonathan Lapidés	5/28	
Stacey A. Nadler	4/16		Shirley Sofer	5/28	
Melissa Cohne	4/19				
Maylee Doepping	4/20	15			
Sheryl Hammer	4/27				

# Mazel Tov!

## Anniversaries

Kyle and Melissa Cohne	3/17	21st
Kathy Alfred and Milton Aviles	3/28	35th
Ken and Frieda Bahr	4/10	18th
Daniel and Geri Brandler	4/10	52nd
Suzanne and Andrew Mahler	5/15	7th
Dean and Orna Adams	5/25	11th

## Recent Donations

### Building Improvement Fund

Dr. Jeffrey & Donna Ackerman  
*For Parking Lot Lighting*

Anonymous Donor  
*For Parking Lot Lighting*

Harold Goldstein  
*In memory of Clell Goldstein*

Shelah Harris  
*In memory of Sam Sonders*

Linda Landau  
*In memory of Michael Liebmann*

Women of CBE  
*For Parking Lot Lighting*

### Choir Fund

Barry & Lynne Selbst  
*In memory of Samuel Selbst*

### Electronic Transaction Fee Donation

Cantor Michael & Merle Russ

Barry & Lynne Selbst

Paul & Zoe Venhuizen

## Feed the Needy

Kathy Alfred & Milton Aviles  
*In memory of Gene Alfred*

Jesse Charnick  
*In memory of Milton Charnick*

Evan & Connie Davidhoff  
*In memory of Rhoda Davidhoff*

Mel & Louise Edelson  
*In memory of Claire Silversher  
& David Silversher*

Sheldon Liebmann  
*In memory of Sylvia Brody*

Larry & Cindy Shilkoff  
*In loving memory of Dorothy Barasch Weiss*

## General Fund

AmazonSmile  
*Charity of Choice*

Alice Fiducia

Steve & Ruth Ann Rossman

## High Holy Days Donation Fund

Kathy Alfred & Milton Aviles

Steven & Gail Altabef  
*In honor of another good year!*

Sheldon Barasch  
*In memory of Marsha Evans, Louis Weiss,  
and Alvin & Sylvia Miller*

Jesse Charnick

Carole Fineberg

Tami Finkbeiner

Robert & Lana Fricke

Steven & Lois Friedman  
*In memory of Barbara C. Sweet*

And Earl E. Friedman

Carole Fryer

Shari Hack

Catherine Holst

Keith & Lynne Kelly

Jonathan & Chandra Lapidés



# Recent Donations

---

**Gracie Lerno**

*In memory of Bent Lerno*

**Sheldon Liebmann**

**Gary Loeb**

**Alan Mann**

**Sanford Miller**

*In memory of Ann & Alfred Miller,  
Sheila Mae Ross, & Daniel Ross*

**Cantor Michael & Merle Russ**

*In honor of Staff & Clergy*

**Maxine Seidel & Thomas Sumner**

**Phyllis Slade**

**Joshua & Shirley Sofer**

*In memory of Matthew Sofer*

**Paul & Zoe Venhuizen**

## Memorial Fund

**Steven & Gail Altabef**

*In memory of David Altabef  
and Barbara Altabef*

**Sheldon Barasch**

*In memory of Dorothy Barasch Weiss,  
Dr. Eugene & Dorothy Strull, and Edna Barasch*

**Mel & Louise Edelson**

*In memory of David & Claire Silversher*

**Tami Finkbeiner**

*In memory of Morris Orloff  
and Benjamin Zimmerman*

**Benni Freund**

*In memory of Ruth Freund*

**Fredyce Holland**

*In memory of Nathan & Lillian Hentell*

**Catherine Holst**

*In memory of Joseph Bailey*

**Keith & Lynne Kelly**

*In memory of Max Rabin*

**Glen & Debbie Knecht**

*In memory of Glen Knecht, Sr.*

**Sheldon Liebmann**

*In memory of Robert Liebmann,  
George Liebmann, and Benish Landau*

**Alan Mann**

*In memory of Linda Mann's 1st Yahrzeit  
and Alex Edward Mann*

**Barbara Mortimer**

*In memory of Dr. Jay Mortimer's 1st Yahrzeit*

**Cantor Michael & Merle Russ**

*In memory of Stuart Keimon & Rhoda Russ*

**Mitchell & Lynn Salberg**

*In memory of Leonard Salberg*

**Dan & Debra Schranze**

*In memory of David Schranze*

**Beverly Troop**

*In memory of Ruth Kaye*

**Karen & Keith Zook**

*In memory of Louis Weiss*

## Programs Fund

**Choice 1 Cleaners**

*For Community Menorah Lighting*

**Evolve Real Estate**

*For Community Menorah Lighting*

**Bert & Marla Goldberg**

**Sophie Carver Miller**

*For Community Menorah Lighting*

**Rabbi Michele Paskow**

*In honor of Suzanne Mahler singing so  
beautifully and her contribution to Social Action  
and*

*In honor of Max & Tamara Patera for their time  
and talent*

**Ruth Pollack**

*In appreciation of Shabbark Shalom*



To purchase a leaf for our Tree of Life in memory of a loved one, go to <https://www.cbesimi.org/product-page/tree-of-life-leaf>

# Recent Donations

---

## Rabbi's Discretionary Fund

Minnie Anzo

*In appreciation of Baby Naming*

Wilbur Brown

*In memory of Sandi Brown*

Ken & Suzanne Epstein

*In memory of Sybil Perlmutter*

Alan & Susan Flaschner

*Monthly act of charity*

Ashley Gelfound

*In appreciation of Rabbi Michele*

Harold Goldstein

*In memory of Clell Goldstein*

Miriam Hintz

*In memory of Lawrence, Naomi,  
& Aaron Chusid*

Arnold Kaufman

Glen & Debbie Knecht

*In memory of Bobette Karoff*

Roberta Lester

*In memory of Barbara Lester Silverstone,  
Wesley Lester, and beloved brother  
Sheldon H. Sloan*

Suzanne & Andrew Mahler

*In honor of Rabbi Michele's wonderful  
Menorah Lighting*

Alan Mann

*In memory of Jacob Mann*

Rachel Perlmutter

*In memory of Sybil Perlmutter*

Ronald & Stacey Nadler Schneeberger

*In memory of Joan Nadler*

## Religious School Fund

Evan & Connie Davidhoff

*In memory of Herbert Davidhoff*

Gabe & Jill Katell

*In memory of Leonard Salberg*

Sandra Sussman

*In memory of Edith Greenberg*

## Tech Equipment Fund

Sheldon Liebmann

*In memory of Thomas Lawson*

## Tribute Donation

Roberta Lester

*In honor of Rabbi Michele*

Cantor Michael & Merle Russ

*In honor of Steve Rossman:*

*Thanks for your help and friendship*

Cindy Shilkoff

*In honor of Max & Tamara Patera's  
generous donation of time and patience*

## Yizkor Pledge Donations

Glen & Debbie Knecht

## Current Needs

### Building & Property Improvement

Additional outdoor lighting on the CBE property

Security Fencing around the perimeter

### Health & Safety

AED: Automated External Defibrillator

---

## Cemetery Program

It's not something we like to think about, but preparing for your own passing in advance ensures your peace of mind, and relieves loved ones of stressful decisions in a time of loss. Congregation B'nai Emet has partnered with Mount Sinai Memorial Park in an endowment program to help our members make pre-need arrangements for burial plots and other funeral concerns. Participation has financial benefits both for you and for CBE.

For more information, contact RuthAnn Rossman at rupee24601@gmail.com or (805) 581-3723. She will connect you with Josh Ryan, Advance Planning Representative at Mount Sinai, or one of his partners. Absolutely no obligation.


## Observing Yahrzeits at CBE

A yahrzeit is the anniversary of a death. It is traditional to light a 24-hour memorial candle in your home, at sundown on the evening before the date of the yahrzeit.

Names of the remembered are read out at Shabbat services on the Friday night immediately preceding the yahrzeit date. Friends and family attend this service, and participate in the recitation of the Mourner's Kaddish. Many people also make a donation to the temple in honor of the remembered, as a mitzvah on behalf of a loved one who is no longer here to do so.

Those who have yahrzeits on file with the Temple office will receive reminders before the dates. We ask for your help in keeping this information current and complete. To add to the current yahrzeit information on file, go to <https://www.cbesimi.org/yahrzeit-reminders>. To check or change same, please contact the office.

### Advertisement




**YOUR FAMILY IS  
PRECIOUS  
TO YOU**

Plan ahead with a gift of love for  
those you care about most.

**Congregation Bnai Emet Advance Planning Representatives**

Eric Frank 805-306-6410 efrank@mountsinaiparks.org	Josh T. Ryan 805-306-6411 jtryan@mountsinaiparks.org
--	--



**MEMORIAL PARKS AND MORTUARIES**

Simi Valley FD 1745 6150 Mount Sinai Drive, Simi Valley CA 93063  
Hollywood Hills FD 1010 5950 Forest Lawn Drive Los Angeles CA 90068  
**www.mountsinaiparks.org 800-600-0076**  
Dedicated to the entire Jewish community as a service of Sinai Temple of Los Angeles.

Herbert Davidhoff	3/1	Adar 8
Abraham Shain	3/1	Adar 8
Dorothy A. Rabin	3/2	Adar 9
Isadore Sharapan	3/2	Adar 9
Ruth Truskin	3/3	Adar 10
Fritzie Gilson	3/5	Adar 12
Mary Hollander	3/6	Adar 13
Milton Schoffman	3/6	Adar 13
Thomas Sumner	3/6	
Barbara Altabef	3/7	Adar 14
Leo Plotkin	3/7	Adar 14
Marian Brandler	3/8	Adar 15
Max David Greenberg	3/8	Adar 15
Julie Heimann	3/8	Adar 15
Bennie Riff	3/8	
Jacob Sweet	3/8	Adar 15
Anne Klein	3/9	Adar 16
Nathan William Kritzer	3/9	Adar 16
Sue Neugroschl	3/9	
Shirley Nusbaum	3/9	Adar 16
Murray Schneider	3/10	Adar 17
John Maslow	3/11	
Alvin Pass	3/12	Adar 19
Samuel Pryor	3/12	Adar 19
Edie Gillis	3/13	Adar 20
Edward Abe Lindenbaum	3/14	Adar 21
Meyer Siegel	3/14	Adar 21
Luitje Venhuizen	3/14	Adar 21

Anna Freeman	3/16	Adar 23
Doris Hollander Gould	3/16	Adar 23
Jacob Landau	3/16	Adar 23
Sylvia Rosenzweig	3/16	Adar 23
Sylvia Tillie Shapiro	3/16	Adar 23
Albert Edelson	3/17	
Donald Nadler	3/17	
Rose Pass	3/17	Adar 24
Emanuel "Manny" Singer	3/17	Adar 24
William Zahm	3/17	Adar 24
Flora Apelman Friedman	3/20	
Dr. Goodwyn "Goody" Garfield	3/20	Adar 27
Mary Hollander	3/20	
Lewis Greene	3/21	Adar 28
Sol Liber	3/21	
Gerald Schned	3/21	Adar 28
Sanford Friedman	3/22	Adar 29
Alex Sutton	3/22	
Joan Tratner	3/22	
Leah Edelson	3/23	Nissan 1
Ida Pollack	3/23	
Arnold Gillis	3/24	Nissan 2
Aron Pichkhadze	3/25	Nissan 3
Morris Glassman	3/26	Nissan 4
Martin Judge	3/26	Nissan 4
Julia Sutton	3/26	
Pinnie Firestein	3/27	Nissan 5

Marie Menke	3/28	Nissan 6
Shirley Bergmann	3/29	
Shannon Cricco	3/29	Nissan 7
Nessine Ribstein	3/30	
Oscar Keimon	3/31	Nissan 9
Agatha Orloff	3/31	
Victor Schatz	3/31	Nissan 9
Sidney Ilowitz	4/1	
Iris Lefton	4/1	Nissan 10
Lillian Solomon	4/1	Nissan 10
Mark Troop	4/1	
Valerie Singh	4/2	Nissan 11
Marvin Steinberg	4/2	Nissan 11
Daniel Moses	4/4	Nissan 13
Rosy Hollander	4/5	Nissan 14
Moses Strassburger	4/5	
Samuel Zimmerman	4/6	
Bernie Edelson	4/7	Nissan 16
Terry Hardin	4/7	Nissan 16
Janice Marder	4/7	Nissan 16
Gail Lenore Shapiro	4/10	Nissan 19
Rubin Barasch	4/11	Nissan 20
Trudy Jackman	4/12	
Gery Kaye	4/12	
Irving Lamm	4/13	
Arnold Wishnick	4/13	Nissan 22
Renate Fried	4/14	Nissan 23
Ira Berkowitz	4/15	
Daniel Small	4/15	



# *Gahrzeits*

Bernice Greenstein	4/17	
Sheila Gurstein	4/17	
Pearl Wohlner	4/17	Nissan 26
Joyce Alexman	4/18	Nissan 27
Lillian Katell	4/18	Nissan 27
Simon Mitchel	4/18	
Hillard Orloff	4/18	
Gloria Rifkin	4/20	
Arthur Irving Korn	4/21	Nissan 30
David Miller	4/21	Nissan 30
Leslie Goldhammer	4/22	Iyar 1
Burton Borrok	4/23	Iyar 2
Dale Charnick	4/23	Iyar 2
Ida Axelrod	4/24	Iyar 3
Irwin Chessen	4/24	
Philip Goldstein	4/26	Iyar 5
Phyllis Pass	4/26	Iyar 5
Addie S. Friedman	4/27	Iyar 6
Trudy Gorelick	4/27	
Oliver Gottlieb	4/27	Iyar 6
Rita Priest	4/28	Iyar 7
Stanford Weinstein	4/29	Iyar 8
Rosa Zimmerman	4/29	
Kate Shaw	4/30	Iyar 9
Martin Mitchel	5/1	
Beverly Friedman	5/3	Iyar 12
Steve Sarott	5/4	Iyar 13
Percy J. Frank	5/5	
Martin Keimon	5/5	Iyar 14

Robert Friedman	5/6	Iyar 15
Tomas Kovar	5/6	Iyar 15
Michael Theodorus Overdevest	5/6	
Lewis Stone	5/7	
Dora Sharapan	5/8	Iyar 17
Don Hicks	5/9	Iyar 18
Miriam Mann	5/10	
Louis Forman	5/11	
Marvin Cohen	5/12	
Natalie Futterman	5/12	Iyar 21
Bertha Liebmann	5/12	Iyar 21
Angela Mann	5/12	
Paul Nadich	5/13	Iyar 22
Bertram Marx	5/14	Iyar 23
Richard Auerbach	5/15	Iyar 24
Jay & Helen Frank Protas	5/15	
Tina Schultz	5/15	
David Tratner	5/15	
Werner Hollander	5/16	
Jerri Loeb	5/17	Iyar 26
Jack Irving Yaskiel	5/17	Iyar 26
Courtenay Edelhart	5/18	
Lillian Knecht	5/18	
Sarah Melnick	5/18	Iyar 27
Ryan Murphy	5/20	Iyar 29
Barbara Sumner	5/20	Iyar 29
Elaine Bienenfeld	5/21	Sivan 1
Mildred Ertel Jessel	5/21	Sivan 1

Rita Seidel	5/21	Sivan 1
Trevor Scharf	5/22	
Matilda Behar	5/24	Sivan 4
Kim Rosado	5/24	
Harry Isadore Friedman	5/25	
Cynthia Miller	5/25	Sivan 5
Mary Brady	5/26	
Sally Mittelman	5/26	Sivan 6
Sadie M. Frank	5/27	
Kurt Fleischmann	5/28	Sivan 8
Fannie Theodore	5/28	Sivan 8
Leroy Ackerman	5/29	Sivan 9
Fanya Bronfermachev	5/29	Sivan 9
Maureen Wessler	5/29	
Gussie Bloch	5/30	
James Bloch	5/30	
Alice Gottlieb	5/30	Sivan 10
Bernice Hearn	5/30	
Bath-Sheva Moses	5/30	Sivan 10
Penny Neugroschl	5/30	
Morris Silversher	5/30	Sivan 10

## **Israel at 75!**

Israel celebrates her 75th anniversary as a modern, independent country on April 26th. Below are two virtual programs Rabbi Michele recommends that honor and explore Israel. Both are offered by the Case Western Reserve Jewish Studies Program: [case.edu/lifelonglearning](https://case.edu/lifelonglearning).

### ***The New New Hebrew: Contemporary Trends in Israeli Culture***

Wed. May 10, 7–8:30 p.m. ET on Zoom  
Israeli culture was built on the Zionist image of the “New Hebrew”: a new type of Jew untainted by diaspora Jewish life and committed to Hebrew as the national language. But in the 21st century, with the rise of globalization and transnational cultural influences, contemporary Israeli culture reflects not only the specific history of Hebrew and of Israel but also many influences that challenge the image of the “New Hebrew.” This talk will focus on some of the trends in contemporary Israeli literature, art, and music that reflect these challenges.  
<https://case.edu/lifelonglearning/lectures/new-new-hebrew-contemporary-trends-israeli-culture-remote>

### ***From Destruction to Revival: Jewish History Between Masada and Tzipori***

With Assaf Boker, Israeli Tour Guide  
Sundays, June 4–11, 2–3:30 p.m. ET on Zoom  
The archaeological sites of Masada and Tzipori at first glance seem unrelated. The story of the massacre at Masada is well-known, but Tzipori’s story is less familiar to most people. Could it be that the lesser-known site of Tzipori shapes Jewish identity far more than the famous site of Masada? And how are the two sites linked together? During two sessions, we will walk through both sites, exploring how the historical events that took place in each of these places shape the story of the Jewish collective and continues to impact the Jewish people to this day.  
<https://case.edu/lifelonglearning/courses/courses-subject/jewish-studies/destruction-revival-jewish-history-between-masada-and-tzipori-remote>